



Magma magic

Experience and experimentation transform a home exterior from dreary to dazzling.

When seasoned professionals come together and combine their skills and expertise, the results can be truly remarkable. That was certainly the case with a recent collaboration between a design expert and a seasoned trade painter, which has given this Melbourne home's exterior a striking new look with dramatic paint details that set it apart.

Prior to the update, the south-facing home was obscured by dense foliage that cast a dreary shadow on its dated, beige façade. Over recent years, other properties along the tree-lined street have been renovated or replaced with sensitively designed homes that add to the overall aesthetic appeal. Designer Mem Shoppee of Mem Butler Interiors aimed to do the same. With her keen eye for detail and colour, she selected a new Resene colour palette that set the tone for the home's new era of modern elegance – but with a dazzling twist.

It was the first render, showing a refreshed colour palette in Resene Black White and Resene Licorice, which initiated the look. While the contrasting combination of blackened white and deep blue worked well with the sandy tone of the existing travertine paving, the existing colours of the front door, pedestrian gate, driveway gates and garage door presented a challenge. In search of a colour that would add warmth and lift, Mem

found inspiration in the sunset at the end of the street, the copper brown seen on the bottom of magnolia leaves and the copper hardware on the home's newly installed cabinetry. After a trip to her local Resene ColorShop, Mem decided to transform the entry points to the home with a unique metallic finish in Resene Magma and entrusted Shay Whitman to apply it.

Shay has been running Melbourne Painting Company since 2012, but his journey in the trade began much earlier. As a teenager, he joined a painting crew and put in time working after school and on weekends to earn money while he was still a student. With more than 25 years under his belt, he's never been afraid of experimenting to find the perfect products to meet his clients' briefs.

Next to each colour name on the Resene Metallic and special effects colour chart, you'll find another Resene colour name in brackets.



above and right: Designer Mem Shoppee wanted to add a new colour to the doors and gates of this Melbourne home that would 'light up' without compromising the appeal of the streetscape, so she opted to have them repainted in Resene FX Metallic paint. The property overlooks magnificent gardens with many established trees creating movement and light from the west. With unobscured sky to the north, sunlight hits the internal face of the pedestrian gate from spring through autumn. At the height of summer, the sun sets at the end of the street, animating the external faces with glittering light. Door and pivot pedestrian gate painted in Resene FX Metallic paint in Resene Magma, which has been applied over a basecoat in Resene Lustacryl tinted to a custom Resene colour. Colour selection by Mem Butler Interiors, painting by Melbourne Painting Company, www.mepaco.com.au, images by Lisa Atkinson, www.lisaatkinson.com.au.



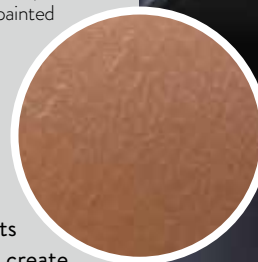


left and right: In order to apply the paint using a HVLP system, Shay carefully masked off all adjacent surfaces, hardware and windows. He also covered nearby parked cars each day to keep them free from paint. Garage door and gates painted in Resene FX Metallic paint in Resene Magma, which has been applied over a basecoat in Resene Lustacryl tinted to a custom Resene colour.

top tip

Resene
Midwinter Mist

When experimenting with Resene products to get a unique colour or finish, be sure to create a test sample on a spare piece of material to ensure you and your client are happy with the finished effect. This sample can then be used by the painter as a reference while painting to ensure everyone is on the same page.



This indicates the colour that should be used as the basecoat if you are looking to create an effect that looks identical to what you see on the colour chart. However, if you are after a unique look, you can use any Resene colour for your basecoat. For this project, a custom Resene colour was created to get the exact look the designer was after.

“Mem went to her Resene ColorShop and spoke to the staff there, who were extremely helpful. They created some custom colour samples and she made her decision on the colour and finish to be used. Then, I contacted my Resene representative who referred me to a Resene expert who guided me through the best method for using these products,” Shay explains.

Mem ultimately chose a custom deep grey colour for the basecoat to achieve the finish she had envisioned. “By using this contrasting hue for the background colour, I was able to clearly see the metallic as I applied it on top, allowing me to create the different patterns and finishes. The front door was finished with a more solid and consistent look. By contrast, the front gate and garage door were given an artistic effect. I experimented by applying heavier coats in certain areas, allowing the paint to sag and dry

to create a fish-scale effect on the driveway gates,” Shay says.

While this was Shay’s first experience using Resene FX Metallic paint, he says he’s looking forward to using it again on future projects. “I would recommend for others to experiment with different base colours as the background colour as it definitely expands the options for what metallic effects can be achieved. One of the best things about Resene is that they produce highly durable, waterborne exterior-grade paints suitable for all surfaces – even steel!”

Shay says the doors were heavy-duty, constructed with a 5mm aluminium face and pre-coated with a two-pack finish, and special attention had to be paid to the various hardware components to ensure the paint job wouldn’t adversely affect them. “After exploring various multi-pack options, we decided to go with the Resene FX Metallic paint system, as it offered the solution and finish we were after. First, Resene adhesion primer was applied directly on the existing two-pack coatings. Then, a basecoat in Resene Lustacryl tinted to a custom Resene colour was applied before finishing with topcoats of Resene FX Metallic

paint in Resene Magma applied with an HVLP (high volume low pressure) system.”

“The decision to use Resene waterborne products is what made this project possible. Every other option we considered would have been impractical to execute on site,” Shay adds.

Mem says that it was Shay’s preparation and expertise in application that showcased the product at its best. “It is an extraordinary paint! It has a three-dimensional appearance when the metallic fleck catches the light, be it headlights or sunlight. The copper colour and its variegated blue and green flecks give the finish the most extraordinary depth and movement as the surrounding environmental conditions change with the seasons.”

“The outcome is remarkable. Each door and gate were deliberately finished slightly different to give each a unique effect. This product has so much depth and play to it, it’s simply artwork,” Shay says.

Since completing this project, Shay has come to understand the diversity and range of primers that Resene offers. “There is a range of completely different primers that work for all surfaces, which is game changing compared

to what we are used to in Australia. We initially planned to resurface these doors with two-pack industrial coatings, which would have been a very expensive process,” Shay explains.

“So far, I have loved every Resene product I’ve used – and I truly mean that. I believe they are ahead of the game. Resene’s advice and support are consistently reliable. I first came across the Resene website over ten years ago while searching online for technical data on a product and I was blown away by how structured and detailed it was. Since then, it has become my go-to source for information.”

Over the past two years, Shay has become a frequent user of Resene Zincilate 11, Resene Galvo-Prime, Resene Lustacryl and Resene Enamacryl. “These are all products I absolutely love. I’m eager to try Resene FX Paint Effects Medium and Resene FX Pearl Shimmer in the future, but I’m especially looking forward to using Resene FX Metallic paint again as it’s a durable and enjoyable product to work with,” he says.

And as this project shows, if you’re open to experimentation, Resene FX Metallic could be the missing piece of the puzzle for a unique look that leaves a lasting impression. **BW**