

habitat

find balance

adaptable and inspirational spaces

by **Resene**
the paint the professionals use



neutral territory
white hot design

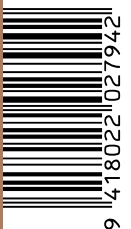
oh what a ceiling!
top-to-toe colour

plus

- paw-some rooms for pets >
- urban oasis - a gorgeous zen garden >
- a coastal cottage gets shipshape >

rrp\$7.95

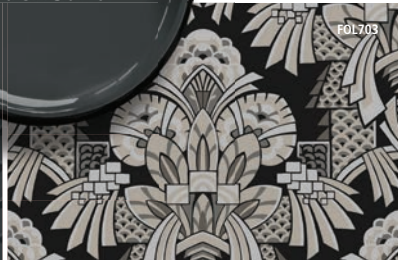
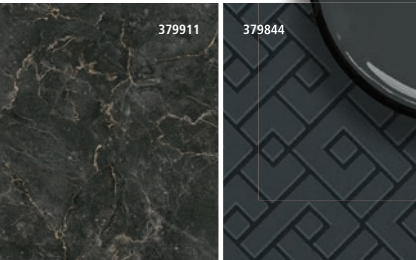
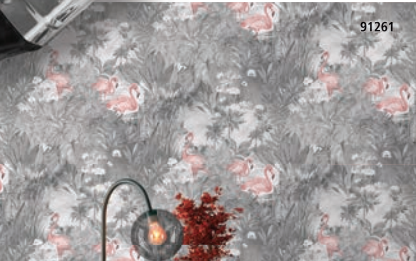
make yourself a home





Wall Paper + Paint

Get the *best* of both worlds...



Resene
Black Sand

Resene
Courtyard

Resene
Four Winds

Resene
White Noise



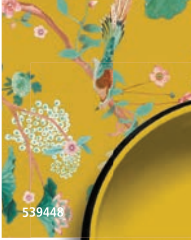
480030



379824



460254



539446



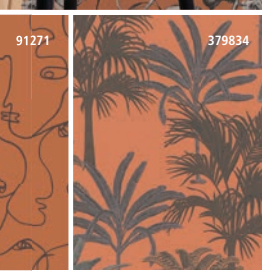
91152



667835



Resene
Tuscany



91271

379834



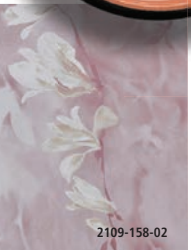
2109-157-01



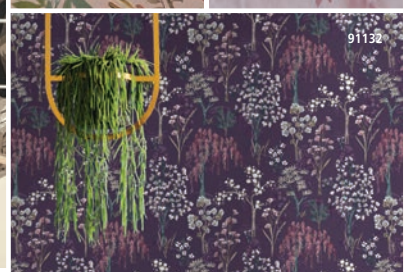
Resene
Funk



2109-157-03



2109-158-02



91132



Resene
Ocean Waves



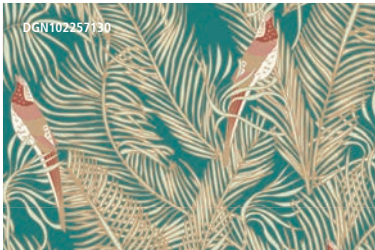
AGA402



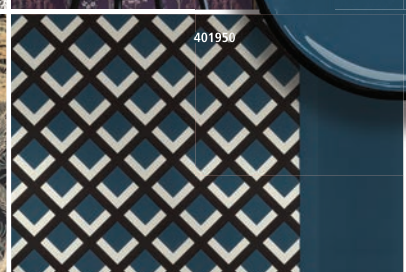
220483



220473



DGN102257130

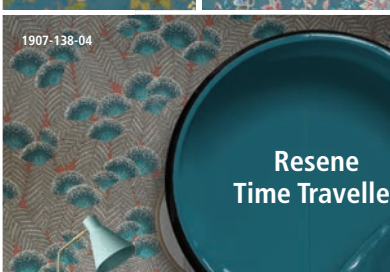


401950



2109-156-04

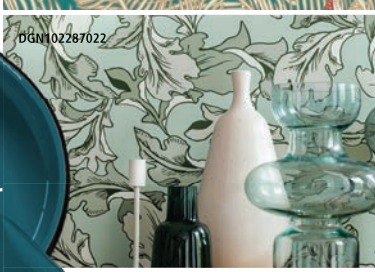
DGN102246125



1907-138-04



Resene
Time Traveller



DGN102287022



2109-156-04

DGN102246125



102626117

379843

Choose from Resene's huge range of designer wallpaper and complement with your favourite Resene paint colours. Come in today and enjoy the Resene difference.

Resene ColorShop

your paint and wallpaper experts!

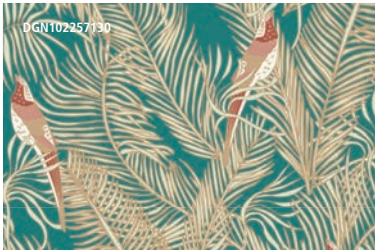
1800 738 383
resene.com.au

0800 737 363
resene.co.nz



91300

379884



91300

379884

ROCKCOTE®

Driven to create surfaces that make a living environment durable, feel and look good to live in. Enjoy the beauty and tactile nature of hand-applied, bespoke plaster in your home.

EBB Hotel, Dunedin

Resene 
Construction Systems

reseneconstruction.co.nz

0800 50 70 40

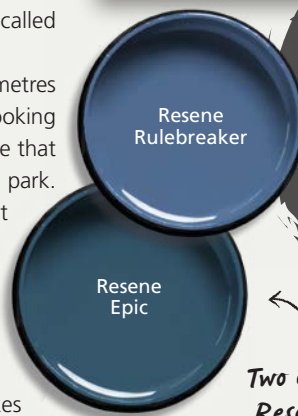
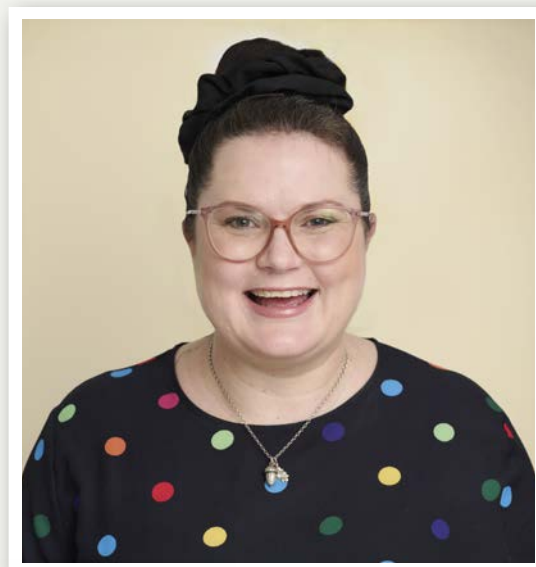
welcome

‘The best-laid plans of mice and men oft go astray’ is an adage adapted from a line in a poem called *To a Mouse* written by Robert Burns in 1785. It could easily have been called *To a House*. No matter how hard you plan a home design, plans change along the way. I found myself reflecting on exactly that recently when I realised the colour palette I’d planned so carefully for our outdoor area wasn’t going to work because the newly installed patio roof made the space darker than intended. To avoid the site becoming like the Bat Cave, I changed Resene Ironsand to Resene Double Merino to bounce more light around.

I thought about old Rabbie Burns again when watching builders demolish parts of the fence my partner Andrew built with my dad a few years ago. The fence in its heyday was glorious (although admittedly in a slightly over-engineered chevron design), built from pine and stained in Resene Woodsman Natural. It was intended to keep our tiny dog Frida, a griffon weighing in at 4.4 kilograms, safe and sound. Due to her size, we (naively) thought the one-metre-high fence would keep her within our gates. One week after we built it, I received a call while at work from the pound. “Do you have a little dog called Frida? She’s escaped and is running around at the dog park.”

Soon fence 1.1 was under construction, with Andrew nailing 60 centimetres of trellis to the top, turning the fancy chevron design into a shonky-looking Shawshank-style prison. The following week, I got another call telling me that Frida had once again scaled the fence and walked herself to the dog park. Eventually, we caught our furry Andy Dufresne red-handed (or should that be red-pawed?) climbing the trellis like a ladder. Vertical slats were added to fence 1.2 to replace the trellis, which has now been superseded by professionally built fence 2.0.

Frida has never escaped again, although she’s also an inside dog for precaution. At *habitat*, we hear stories like this all the time: homeowners build homes intending them to look a certain way only to find life takes another path – be it thanks to growing families, health changes, council plans or naughty pets. If this sounds like your family, check out our story on fluid home design on page 36. And if your dog turns out to be a pint-sized parkour athlete, check out our story on pet-friendly homes on page 68 (where naughty Frida makes a cameo appearance). We love to hear your renovation stories (hopefully, more successful than my fence saga) and see photos of your projects. Send them to editor@habitatbyresene.co.nz.







Are you working on a project with Resene paints, stains or wallpaper? We’d love to see it! Please share it with us on email, Instagram or Facebook.

✉ editor@habitatbyresene.co.nz

📷 [habitatbyresene](https://www.instagram.com/habitatbyresene)

📘 [habitatbyresene](https://www.facebook.com/habitatbyresene)

Two of my favourite colours from the Resene The Range fashion colours

- Resene Alabaster 
- Resene Double Merino 
- Resene Ironsand 
- Resene Woodsman Natural 

Emma

Emma Rawson editor

When you work at Resene, you get used to hearing everyone’s paint or colour story when you meet them. While, now and again, the stories sound like they should be on a comedy show of how not to DIY, most decorating stories are uplifting and remind us just how much joy and transformation a little paint can bring to the world.

There are those who dream of new kitchens and bathrooms, but perhaps right now they have to settle with a ‘good enough’ update while they save up for their dream space. A fresh paint colour is a quick way to make what seems like a currently unliveable space enjoyable while the saving takes place.

There are those who want to remember happier days; who revive treasured memories using favourite colours on heirloom furniture to enjoy a little nostalgia every day.

Then there are those who ooze colour. They live in homes that

most of us wish we’d be bold enough to put together, while secretly knowing we’ll still be living with neutral walls tomorrow.

In amongst all those is the real unsung hero – the paint itself. We all like to think and talk about the paint colour, but it’s the paint itself that is doing the heavy lifting. The paint formula and quality colour tinters make all the difference in making sure that your colour keeps looking like the colour you chose for as long as possible and that your home is well protected.

So next time you’re choosing a favourite colour, take the time to think about the paint you’re choosing too and enjoy the best of both for longer.

Happy decorating!

the Resene team

Resene Morning Haze 

habitat magazine is brought to you by

Resene

the paint the professionals use



In Australia:

www.resene.com.au
1800 738 383

In New Zealand:

www.resene.co.nz
0800 RESENE (737 363)



www.youtube.com/resenedecorating
www.youtube.com/habitatbyresene



www.instagram.com/resenecolour
www.instagram.com/habitatbyresene



www.facebook.com/resene
www.facebook.com/habitatbyresene



www.pinterest.com/resene
www.pinterest.com/habitatbyresene

For gorgeous home projects every week, go to www.habitatbyresene.com.
For all you need to know about paint and decorating, go to www.resene.com.

Some products or services may not be offered in your area or country. Please check with your local Resene ColorShop or reseller for availability. Most Resene products can be ordered on request though lead times and minimum order quantities may apply.

To update your mailing address, email update@resene.co.nz with 'Update habitat magazine details' in the subject line. Please include your Resene DIY cardholder number or customer reference number.

Colours are as close as the printing process allows. Always try a Resene testpot or view a physical colour sample before making your final choice.

habitat by Resene is a bi-annual publication. The contents of habitat by Resene are copyright and may not be reproduced in any form without the written permission of Resene. Opinions expressed in habitat by Resene are not necessarily those of Resene or the publisher. No responsibility is accepted for the authors' suggestions or conclusions, or for any errors or omissions. Copyright 2022 Resene Paints Ltd. ISSN: 1176-8010

editor Emma Rawson, editor@habitatbyresene.co.nz

design Alisha Kumar, Catherine Luong, Julian Pettitt, Chrisanne Terblanche

advertising Marcus Hawkins-Adams, marcus.hawkins@scg.net.nz



CREATIVE. CONTENT. PRINT. Published by SCG, www.scg.net.nz
phone +64 9 360 5700

Read all issues of habitat by Resene free online at www.resene.com/habitat.

Ask us anytime online

Need help with a painting project or perhaps you've got a burning paint or colour question and are unsure who to ask? Ask our Resene experts. They can help you with free advice and information direct to your inbox.

Try out the free Resene Ask a Paint Expert service

www.resene.com/paintexpert

Try out the free Resene Ask a Colour Expert service

www.resene.com/colouexpert

We are trialling a paper wrap on some copies of habitat magazine – if you have received your habitat in paper wrap please recycle it with your normal paper recycling. habitat is working with the Magazine Publishing Association to find new alternatives for magazine wraps. Many options have been tested, from corn to potato, but none have yet proven durable enough for the mailing system. The current wrap is 100% recyclable – you can reuse it, and when you no longer need it, it can be recycled with other soft plastics. Please visit www.recycling.kiwi.nz for participating soft plastic recycling locations. If there is no collection point near you, take your wrapper to your local Resene ColorShop and we will recycle it for you. This magazine is printed on Chain of Custody certified papers sourced from responsible sources. The SCG manufacturing facility is Toitū Net Carbon Zero certified and Webstar is Toitū Enviromark Diamond certified.



Resene Half Tea Resene Colorwood Mid Greywash Resene Colorwood Walnut



18



46



70



36



68

contents

every issue

12 off the shelf

New products and services for your home

39 bright idea

A DIY project to promote mindful calm

40 tradie gal

Tegan Williams transforms a bathroom

44 delightful décor

Wallpaper your way to a tropical escape

45 colourful person

A creator whose designs strike a chord

56 kitchen

Serene blues embrace maritime history

65 bathrooms

Top tips for wallpapering in wet rooms

76 for the kids

Make and paint beautiful birds

78 bench impress

Upcycle wooden pallets into a stylish bench

80 a stylish career

Interior design Megan Harrison-Turner's favourite colours

features

6 press reset

Be inspired by new colour trends

18 sea change

A modern look for a classic Queenslander

28 white hot

Find the perfect neutral for your home

34 top class

Play with colours overhead

36 flex appeal

Fluid design for functional spaces

46 hello sunshine

Vibrant colours for a unique home

59 splash out

Add impact with a bold splashback

60 little and lovely

Building tiny houses with a big impact

64 fresh thinking

Understanding plant-based paints

66 it's showtime

Get back to black for your media room

68 style purr-fection

Design with your pets in mind

70 urban oasis

A beautiful zen garden in suburbia



Cover look

Earthy hues are perfect for hunkering down in winter. Wall in Resene Welcome, floor in Resene Colorwood Mid Greywash, console in Resene Streetwise, wall hooks in Resene Papier Mache, vase in Resene Half Tea sitting on a board stained with Resene Colorwood Walnut and basket in Resene Settlement. The Tumu Ishi blocks are stained in Resene Woodsman in Resene Japanese Maple, Resene Warm Kwila, Resene Riverstone, Resene Driftwood and Resene Bark. Throw from Città.

project Shani Luckman
image Bryce Carleton

For *habitat* 38, Resene has donated 500 native trees to Trees That Count to help regenerate native forests. This adds to the thousands of native trees Resene and Resene Eco.Decorators have donated since 2020.



-  Resene WB Woodsman Riverstone
-  Resene WB Woodsman Driftwood
-  Resene WB Woodsman Warm Kwila
-  Resene WB Woodsman Japanese Maple
-  Resene WB Woodsman Bark



press reset

Designers and homeowners embrace
feel-good hues, spawning an age of colour.

Spring is usually the season for new beginnings, but the renewal cycle has already kicked into gear in the design world. The pandemic brought prolonged disruption and, after some time 'back to normal', many of us are hitting the reset button. Workforce indicators show more of us are exploring flexible working arrangements or rethinking our careers, with many making career shifts into other industries. The latest Resene colours and wallpapers reflect this desire to foster a sense of wellbeing, balance and harmony in our homes.

Greener pastures










As the world heals from its pandemic wounds, biophilic patterns and nature-inspired hues, such as green, brown and terracotta, are two of the leading design trends. It's no secret that being in nature is good for our mental health, but the pandemic has put its beneficial effects under the microscope. A longitudinal study by the Department of Behavioural Science and Health at University College London measured the impact of going outdoors on people's wellbeing. Researchers surveyed 35,301 people during lockdown periods and confirmed what many of us know anecdotally – those who spent longer outdoors showed decreases in depressive and anxiety symptoms and increased life satisfaction.

Green is the colour most associated with the outdoors and has been a trending colour in architecture, design and fashion for the past few years. During this time of significant change, it's not surprising that the greens this season are even more luscious and full of life. On-trend greens have moved away from greyed-out sages and eucalyptus hues towards vegetative greens such as Resene Bitter and Resene Scrub and vibrant sea and emerald greens like Resene Welcome, Resene Deep Teal and Resene Forest Green.

"Homeowners are using green tones on the interiors and exteriors of their homes. This is because green adds life to a space; bringing nature inside can often bring a sense of calm and serenity," says Resene Colour Consultant Amy Watkins.

"As the trend has progressed, we are seeing growing use of warmer greens like olives and forest tones as they bring comfort to a space. Using a deep lush green like Resene Welcome on all the walls of a bathroom is a style statement, creating moodiness and a sense of luxury that makes for a restful setting."

The Resene Wallpaper Collection is also teeming with new growth, with many vibrant botanical and animal designs, such as Resene Wallpaper Collection 37990-3, ideal for bringing life to living rooms, bedrooms and even bathrooms and powder rooms (read more on page 65). ➤

 Resene Thorndon Cream	 Resene Aspiring	 Resene Bitter
 Resene Moon Mist	 Resene Bud	 Resene Deep Teal
 Resene Forest Green	 Resene Scrub	 Resene Welcome



Resene
Rice Cake

Resene
Quarter Pavlova

Resene
Sandbar

Resene
Putty

Resene
Papier Mache

Resene
Bullwhip

Above: This three-tiered square design in on-trend sandy hues works painted on a feature wall or as a headboard. Large square in Resene Papier Mache, medium square in Resene Putty, small square in Resene Bullwhip, floor in Resene Rice Cake, console table in Resene Sandbar, bobble vase in Resene Bullwhip and DIY artwork and other vases in Resene Quarter Pavlova, Resene Papier Mache and Resene Bullwhip.

Opposite: Make flora and fauna jump off the wall by cutting out leaves and animals from Resene Wallpaper Collection 37990-3 and pasting them over the edge of the pattern. Wall in Resene Bitter, floor in Resene Moon Mist, bedside table in Resene Hemlock, book in Resene Thorndon Cream and lamp base in Resene Aspiring and Resene Bud, with additional wallpaper wrapped around the lampshade. Duvet from Bed Bath & Beyond, cushion cover and throw from H&M Home, other cushions from Freedom, Home Republic and Adairs.

Resene
Hemlock 



Resene Boost

Resene Lakeside

Resene Epic

Resene Ocean Waves

Left: Resene Carpe Noctem provides cosy comfort in this lounge while batten art in Resene Epic, Resene Ocean Waves, Resene Boost and Resene Lakeside adds a refreshing splash of aquatic colour. Flooring in Resene Colorwood Shade, coffee table and large plant pot in Resene Epic and small plant pot in Resene Boost. Sofa from Interior Warehouse.

top tip

When you're changing colours, test your paint colour choices by painting two coats using a Resene testpot onto A2 card leaving an unpainted border around the edges and view during the day and night.

- Resene Colorwood Breathe Easy
- Resene Tea
- Resene Double Duck Egg Blue
- Resene Idyllic
- Resene Smashed Avocado
- Resene Colorwood Shade
- Resene Carpe Noctem

"The key to achieving the nature-inspired trend is to have dusty natural colour tones on the walls," says Amy. "Colours like Resene Tua Tua or Resene Foundation maintain good depth and create a calming environment. You can also bring in grasscloth wallpaper or linen-textured designs, such as Resene Wallpaper Collection 407938, to add natural texture and tactile elements to the space."

Other earthy tones to try as accent colours or statement hues are energising yellow-toned beiges such as Resene Papier Mache and Resene Putty or a green ochre like Resene Bullwhip. Burnt orange and paprika hues are the top trending colour searches for wedding décor on Pinterest right now – for a splash of these celebratory hues, try Resene Ayers Rock or Resene Thunderbird or create a retro vibe with mid-century oranges like Resene Clockwork Orange and Resene Tequila Sunrise. Pair with organic curves and arches to amplify the natural style.

Dial up the colour

A trending post on TikTok that asked users, "Is the World Turning Grey?" is very telling. The post on the social media platform and others that followed lamented the lack of colour in the world and

quoted data from a survey of the objects from Britain's Science Museum Group Collection. The survey showed blacks and greys account for about 40 per cent of all colours found in contemporary objects compared with about eight per cent in the year 1800, sparking a moral panic from TikTok users to "bring back colour". These posts indicate a seismic shift in the design world as the world turns away from the grey-and-white minimalism that defined the early 2000s.

Neutrals have shifted away from cool grey tones to those with warmer undertones, such as Resene Spanish White and Resene Quarter Tea. Design, in general, is becoming braver with colour. "It's an exciting time. We are entering an age of colour after more than a decade of achromatic design," says interior designer Megan Harrison-Turner. "If dipping your toes into the colour realm again seems a bit daunting, stick to one colour paired with a neutral and pull the room together by using that colour in three different places," says Megan.

Test the waters

While blues are eternally popular decorating hues, colour trend forecasters are predicting the rise of 'wellness blue' – an excellent place to start for those nervously dipping their toe into the colour revival. "The experiences of the past two years have highlighted the important links between wellbeing and green spaces. Now the benefits of blue spaces are being explored scientifically," writes creative agency ColourHive. "Recent research points to the health benefits, including relieving stress and encouraging exercise, of time spent by and in water."

Resene blues range from the dark depths of Resene Carpe Noctem to the tropical aquamarine shallows of Resene Boost and Resene

- | | | |
|---|---|--|
| <input type="checkbox"/> Resene Meringue | <input type="checkbox"/> Resene Quarter Tea | <input type="checkbox"/> Resene Awaken |
| <input type="checkbox"/> Resene Spanish White | <input type="checkbox"/> Resene Putty | <input type="checkbox"/> Resene Clockwork Orange |
| <input type="checkbox"/> Resene Tua Tua | <input type="checkbox"/> Resene Liquid Gold | <input type="checkbox"/> Resene Ayers Rock |
| <input type="checkbox"/> Resene Foundation | <input type="checkbox"/> Resene Tequila Sunrise | <input type="checkbox"/> Resene Thunderbird |
| <input type="checkbox"/> Resene Papier Mache | <input type="checkbox"/> Resene Bullwhip | <input type="checkbox"/> Resene Rebel |



Idyllic. Another trend on the rise is the use of wellness zones within homes, that is, areas dedicated to quiet activities such as yoga, meditation or reading. “Spaces where you can wind down, take a load off and minimise stress are more popular than ever,” says Resene Canterbury Design Advocate Brooke Calvert. “These spaces are often focused on soft and natural colours like dusted blues, sea greens, creamy whites, petal pinks, mushroom, mauves, cloudy greys and washed timber tones like Resene Double Duck Egg Blue, Resene Unite, Resene Meringue, Resene Awaken, Resene Kinship, Resene Ted and Resene Colorwood Breathe Easy.” Learn more about adaptable spaces on page 36.

Core strength

Barbiecore, mermaidcore, pearlcore, cottagcore and Regencycore are just a few of the micro trends of late that have us exclaiming, ‘core blimey!’ While Barbiecore sees the rise of hot pinks such as Resene Scrumptious, mermaidcore and pearlcore celebrate gloss, metallic and iridescent tones (to get the look, try glazing your favourite vase in Resene FX Pearl Shimmer or try adding a touch of pewter with Resene FX Proton). Meanwhile, cottagcore evokes the whimsical country aesthetic of the arts and crafts movement of the 1920s (and its resurgence in the 1970s), and Regencycore nods to Jane Austen-era classicism. The unifying link between these disparate trends is a sense of playfulness and fantasy. If you want to embrace the spirit of 1970s boho freedom, as seen in the bestselling novel and spinoff TV show *Daisy Jones & The Six*, try hues such as Resene Smashed Avocado, Resene Liquid Gold and Resene Rebel. Pop stars Taylor Swift and Harry Styles have adopted this same 1970s vibe on the cover art for their recent albums. ➤



Above: Resene Half Grey Chateau’s violet undertones seen on the weatherboards and side table of this outdoor entertaining area make it an ideal pairing for on-trend violets, such as Resene Poet and Resene Jimmy Dean on the plant pots. Flooring in Resene Non-Skid Deck & Path in Resene Landscape Grey with stencilled pattern in Resene Off Piste. Egg chair, cushions from Nood.

Above left: Battens and panelling remain an interior trend, adding texture and dimension, but an easy DIY alternative is to hang picture frames on the wall. Wall and coffee table painted in Resene Thor, floor in Resene Merino, side table in Resene Sorrento and vases and tray in Resene Tea, Resene Thor and Resene Sorrento. Sofa from Nood, rug from Città, cushions from The Warehouse, H&M Home and Freedom, faux foliage from Adairs and Farmers.

Resene Merino

Resene Kinship

Resene Off Piste

Resene Half Grey Chateau

Resene Ted

Resene Poet

Resene Jimmy Dean

Resene Landscape Grey

Resene Wallpaper Collection 407938

- Resene Unite
- Resene Thor
- Resene Sorrento
- Resene Scrumptious

THE PEAK OF ELEGANCE.



CF Shake, Charcoal Blend

Our new Concealed Fastening system is the latest innovation from Gerard, delivering the ultimate combination of style and weather performance. Screws are completely hidden from view and protected from the elements, so your roof looks great and performs even better.



BRANZ Appraised
Appraisal No.1089 (2020)

gerardroofs.co.nz

 **GERARD**
Roofing Designed to Endure



A trend taking fantasy to the next level is ‘middle ages modern’, a play on mid-century modern, which also channels Tudor-esque style with jewel tones and dark wood stains, such as Resene Colorwood Shade and Resene Colorwood Dark Ebony, paired with warm whites such as Resene Half Pearl Lusta.

Just wanna have fun

A colourful trend, perhaps in retaliation to the “world turning grey” posts on TikTok, was the #fairlyoddparentschallenge, where users of the social media platform started posting photos of pink and green together. This trend is curiously inspired by the early 2000s children’s TV show *The Fairly OddParents*. With content like this, a sense of childlike wonder has entered interiors with candy-coloured hues such as Resene Urbane and Resene Moonbeam and conversation-starting pop-art wallpapers like Resene Wallpaper Collection M47705. Because why not?

There’s no better time to embrace change in your home, be it adding a little rockstar 1970s flair or simply ditching grey to warm up your neutrals. The great thing about paint is it’s easy to make a switch again in future should life take you in another direction. **H**

projects Kate Alexander, Megan Harrison-Turner, Vanessa Nouwens
words Emma Rawson
images Bryce Carleton, Wendy Fenwick

- Resene Rice Cake
- Resene Grey Chateau
- Resene Colorwood Breathe Easy
- Resene Colorwood Dark Ebony
- Resene Colorwood Shade



Above left: Transform a home office into a fun space with Resene Wallpaper Collection M47705 paired with an arched wall painted in a sunset pink like Resene Awaken or Resene Coral Tree. To create terrazzo flooring, paint a base colour in Resene Rice Cake with random triangle shapes in Resene Awaken, Resene Comfortably Numb and Resene Grey Chateau.

Above: Use barely there colours like Resene Urbane in place of neutrals to add playfulness to a space. Flooring in Resene Colorwood Breathe Easy, side table and mirror in Resene Boundless, pendant lamp and vase in Resene Green Acres and rug in Resene Moonbeam. Yellow quilt and pillows from Adairs, lilac throw and pillows from H&M Home, mug from Freedom.

Resene Half Pearl Lusta

Resene Urbane

Resene Comfortably Numb

Resene Moonbeam

Resene Coral Tree

Resene Green Acres

Resene Boundless



For more tips, pick up a free copy of the latest *habitat plus* – *decorating and colour trends* from your local Resene ColorShop or reseller. It’s packed full of ideas for how you can use today’s fashionable colours in your home. Or view it online at www.resene.com/habitatplus.

Resene Awaken

off the shelf

New products and ideas for the home.



dancing for joy

Resene
Toffee

The new designs from the Resene Salsa Wallpaper Collection will have you dancing with delight. Rich florals, satisfying geometrics and relaxing block colours give you all the options you need to bring out the best in your room. With variety and inventiveness this collection brings back a sense of fun as well as sophistication. Warm shades like these in Resene Wallpaper Collection 480030 flourish on walls to create a joyful space. View online, www.resene.com/wallpaper, and at your local Resene ColorShop.

*Be in to win \$500 of Resene wallpaper of your choice from a Resene ColorShop. Enter online at www.winwithhabitat.com. The Resene Wallpaper competition is open to NZ and Australian residents. Prizes may not be exchanged or redeemed for cash. Entries close 30 September 2023.

décor with a twist

This stylish set of two Amadeo nesting tables from Artwood sit perfectly together to give your room that always useful spot to showcase your treasures or set down your coffee cup. Hand-crafted with textured aluminium tops on an elegant iron base, every table is subtly unique. To see more visit Artwood at 59-61 The Strand, Parnell or browse online at www.artwood.nz.

Resene
Forest Green



luxurious linen

The Resene Living range of bedlinen has been carefully designed to complement popular Resene paint colours and includes a range of duvet designs and colourways to help you co-ordinate your home. This sophisticated Florence duvet inspired by Resene Pioneer Red creates a bold note of colour perfect to offset cooler temperatures outside. In this room, it's paired with walls in Resene Shilo for soothing freshness. Florence is also available in Resene Alabaster and Resene Napa. Available from Briscoes, www.briscoes.co.nz.

Resene Alabaster Resene Shilo
Resene Napa Resene Pioneer Red





invade your space

Resene Pursuit 

The playfulness of pop colours in Resene Pursuit, Resene Juicy, Resene Turbo, Resene Malibu and Resene Groovy were perfect when artist Shane Gault created this piece inspired by Space Invaders and the other early computer games he grew up with. Shane, a full-time teacher as well as an artist, worked with a mixture of sculpture and painting to create this pixelated work. He also makes good use of the Resene Find-A-Colour tool to choose colours: www.resene.com/findacolour. But not all of Gault's work is technology inspired. He was first inspired by a tapa cloth gifted to him 20 years ago, admiring its simplicity and celebration of nature. His work today is a mix of technology and those more natural inspirations. See more of Shane's designs at www.4hoovesDesign.co.nz.

beautiful botanicals

Resene Field Day 

Hanging one of these beautiful pieces, featuring Resene Green Meets Blue, by artist Anna Tang will lend any space immediate peace and tranquillity. Anna creates her work by applying as many as 30 layers of Resene Lumbersider to a wooden base, then carefully carving out her intricate designs. Her creations are often inspired by urban nature and wild flora, much of it from the surroundings of her Auckland home studio. Anna also enjoys the simplicity of working in duotone, and playing positive and negative space. See more of her work at www.anna-tang.com.



NEW COLLECTIONS

Over 300 Pages of Bathroom Inspiration



Request your free catalogue

0800 001 478 or info@plumbline.co.nz

View the Plumbline collection at our Auckland and Wellington Showrooms and at leading bathroom retailers nationwide.

Plumbline

Condensation driving you quackers?



For a warm, dry bathroom and a healthier home, nothing beats a Showerdome®

Eliminate bathroom steam and stop mould and mildew.

showerdome®

LAYBUY

afterpay



0800 541 223 or buy online at:
www.showerdome.co.nz

top 20 colours

We home decorators are nothing if not consistent! Resene Black White has once again taken top spot as Resene's most popular colour. Resene's official Top 20 colours showcases our collective ongoing love of versatile neutrals, but also marks a shift to bolder, darker charcoals with the likes of Resene Bokara Grey at number four, Resene Grey Friars at 11 and Resene Shadow Match wood stain at 14. The popularity of paler subtle grey neutrals can also be seen with Resene Sea Fog in at number six, and Resene White Pointer at number eight. These greyed neutrals work well with popular muted shades from the Resene The Range fashion colours fandeck, like on-trend botanical green Resene Wabi Sabi and burnt yellow Resene Liquid Gold. Read more about how to get the most from whites and neutrals on page 28. Find your next favourite colours at www.resene.com/top20.

Resene Wabi Sabi Resene Liquid Gold



seal the deal

Do you want an interior broadwall sealer for wet areas that doesn't come with strong solvents or odour? New Resene Waterborne Sureseal is designed especially for interior surfaces, such as bathrooms, kitchens, old varnishes and even Lockwood® varnished surfaces. The product has excellent adhesion, low VOC and low odour, so you can easily make old look new. Available from Resene ColorShops and selected resellers.

Resene Petal

- 1 Resene Black White
- 2 Resene Alabaster
- 3 Resene Half Black White
- 4 Resene Bokara Grey
- 5 Resene Double Alabaster
- 6 Resene Sea Fog
- 7 Resene Quarter Black White
- 8 Resene White Pointer
- 9 Resene Half Sea Fog
- 10 Resene Merino
- 11 Resene Grey Friars
- 12 Resene Half Rice Cake
- 13 Resene Double Black White
- 14 Resene Shadow Match
- 15 Resene Rice Cake
- 16 Resene Half Alabaster
- 17 Resene Half Fossil
- 18 Resene Half White Pointer
- 19 Resene Ironsand
- 20 Resene Quarter Wheatfield



colour match with comfort

The right rug will immediately elevate any space, adding not only a layer of comfort, but, when the colours are right, the perfect finishing touch that pulls your whole look together. The Resene Living rug range comes in three fashion-forward designs that have been expertly designed to complement Resene's colour range, while still emphasising comfort with a super-soft finish underfoot. This design has been created to work with Resene Gold Coast, Resene Tuscany, Resene Half Shark and Resene Alabaster. Available from selected Mitre 10 MEGA stores in May.

- Resene Hindsight
- Resene Alabaster
- Resene Gold Coast
- Resene Tuscany
- Resene Half Shark

Resene Barista

it's all in BlackWhite

Look out for issue 05 of *BlackWhite* magazine, out now. Designed for specifiers, interior designers, tradespeople, builders, architects and students, *BlackWhite* offers insight into the latest products, industry-leading projects and design trends. This issue includes a wrap-up of the Resene Colour Award winners, a profile on the revival of Hastings Municipal Building, and the lowdown on Resene's plant-based paint products among many other things. Check it out online at www.resene.com/blackwhite.

Resene Colorwood Breathe Easy

natural beauty

Take a leaf out of the new booklet, *habitat plus – wood stains*. With renewed appreciation for Mother Nature and connecting with the outdoors, looking after your timber finishes to maximise their longevity is more important than ever. This booklet contains all the inspiration you need to embrace and enhance the natural beauty of wood inside and out with Resene's range of woodcare products. Pick up a free copy at your Resene ColorShop or view it online at www.resene.com/habitatplus.

Resene Biscay

master your projects

Planning to DIY but not sure where to start or when to call in the professionals? New MasterStroke by Resene is here to help you master your paint and decorating DIY projects. Improve your skills with videos containing advice, tips and ideas from our trusted experts. Learn to paint like a pro, get upcycling and do-up ideas, and be inspired to get that DIY to-do list done! Check out the latest videos at www.youtube.com/@masterstrokebyresene.



win a Showerdome®

Resene Wayfarer 


Steamy mirrors, condensation on walls and ceilings, slippery floors and mould are year-round frustrations caused by shower steam, that can also add significant upkeep costs to your home. A dry warm home is also a healthy home, as damp bathrooms are the perfect place for fungus and bacteria to grow. Showerdome® solves all these problems by controlling steam, reducing condensation and making your home healthier and warmer.

A Showerdome® is a clear acrylic dome that fits on top of an existing shower box and prevents steam from forming. Showerdome® has no ongoing costs and makes mirror demisters and extractor fans redundant, potentially saving the average household around \$250 in energy costs. Learn more at www.showerdome.co.nz. We have 1x DIY Showerdome® kit to give away valued at \$339.

*Giveaway is for shower top only. Installation by an official local Showerdome® installer is available at standard pricing. ** HOW TO ENTER: Enter online at www.winwithhabitat.com. The Showerdome® competition is open to NZ residents. Prizes may not be exchanged for cash. Entries close 30 September 2023.



made for renovators

Resene Solitaire 

Escea's DF Series gas fireplaces are a favourite amongst renovators, with modest dimensions and flexible installation making them ideal for retro-fitting into existing cavities. Refined detail gives you more flame and less frame, with an elegance worthy of both traditional and contemporary designs. View the range at www.escea.com/df-series.

Resene Half Concrete 

the ultimate decorating card



Take your DIY card along to your local Resene ColorShop or participating reseller to benefit from these great savings:

discounts off...

- 10% off Resene premium paints, stains, primers and sealers
- 10% off wallpaper
- 10% off a wide range of decorating accessories
- Resene Curtain Collection curtains and fabrics (NZ only)

And, of course, a **free** subscription to *habitat* magazine **plus** enjoy special bulk discounts when you spend more than \$750 in one visit.

For colour lovers, get the price of your 60-80 mL testpot or A4 drawdown/testpatch back when you purchase paint or stain of the same colour. Simply bring back the receipt with the empty or part-full testpot or the A4 drawdown/testpatch when you purchase 1 litre or more of Resene premium paint or stain tinted to the same colour.

For wallpaper lovers, get the price of your wallpaper sample back when you purchase a roll or more of the same wallpaper. Simply bring in the sample and your receipt when you buy your wallpaper and we will credit the cost of one wallpaper sample off your purchase of one roll or more of that wallpaper.

there's more...


There's a range of discounts and offers from other stores and suppliers. See www.resene.com/cardoffers for further details on these offers.

- Dish magazine
- Good magazine
- NZ Marketing magazine
- Hirepool
- Tile Warehouse

If you don't have a card, apply at your local Resene ColorShop or participating reseller or apply free online at www.resene.com/diycard.

Offers are valid in New Zealand to Resene DIY cardholders only until 30 September 2023 and are not available in conjunction with any other offer, discount or promotion. All companies reserve the right to amend or update their offers. See www.resene.com/cardoffers for current offers.

flat and matt

Resene Open Sesame 

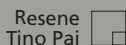
With lower sheen finishes growing in popularity, the Resene technical team have formulated a new waterborne option for those after a flatter style finish on exterior surfaces. New Resene Lumbersider Matt is designed for exterior walls, weatherboards and landscaping elements, and is initially available in a selected range of colours. The waterborne formula will help protect your home against whatever Mother Nature brings, while bringing it into the matt exterior finishes trend. Available from Resene ColorShops and selected resellers.





quality is key

Resene ColorShops have won the Reader's Digest Quality Service Award for paint and decorating stores for the seventh year in a row. The Resene ColorShop team can help you with all aspects of your project, large and small, from colour and technical recommendations to handy paint and product application tips to help you get your projects done right first time.



built for blue



Blues have never looked better thanks to the new Resene Only Blue Wallpaper Collection. An almost universal favourite colour, the perfect shade of blue can soothe the mind and soul, making it ideal for living, sleeping and relaxation spaces. From light to dark, retro to floral, there is something to suit every room in your home, like this chic Resene Wallpaper Collection ONB102646290 with subtle detailing. View online, www.resene.com/wallpaper, and at Resene ColorShops.



NEW TO NZ, JOHNSTON IMPORTS IS PROUD TO PRESENT "SPIRIT OF THE NOMAD"
A COLLECTION OF LUXURY LINENS

www.ji.net.nz info@ji.net.nz 03 317 8044





A near-century-old worker's cottage in Queensland couldn't have landed in better hands.

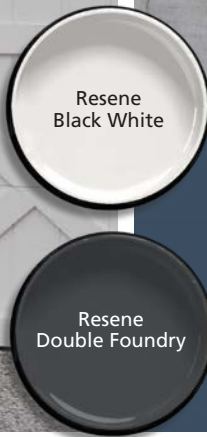
When Jared and Sarah bought their 1930s home in Burleigh Heads, its mood was anything but coastal chic. The living room featured pink walls and matted, purple carpet; its kitchen was crumbling, the deck partially rotted. It might have been enough to scare off the average buyer, but for builder Jared and interior designer Sarah, behind the home's shortcomings was its potential. All it needed was a bit of love – and an injection of bold colours such as Resene Double Foundry and Resene Bunting.

“We bought the place over a decade ago and knew it needed

work, but we felt drawn to the cottage's history and story. As a builder and designer team, we could see how it would evolve as our forever family home,” says Sarah. Experienced renovators (the pair run their own company, Davey Constructions), Jared and Sarah first got stuck in with basic cosmetic work. “I was pregnant with twins at the time, so we just tidied up the place a bit.”

The worker's cottage has been a busy household since, with twins Kade and Harry (11), Beau (9), and a beach-loving British Bulldog called Bruce now in the mix. But the pandemic, which forced the world to slow down a bit, offered the perfect opportunity for stage two of the renovations.

“Renovating has never been easy to fit in between running our business and family time; we'd always put it off,” Sarah says. “But during the lockdowns, we weren't sure what would happen in the



Left: “We wanted to create a home with colours that were classic and wouldn’t date,” Sarah says of her Queensland home painted in Resene Double Foundry and Resene Black White.

Above: The original brick fireplace sits at the heart of the living room, surrounded by sophisticated neutrals, with walls in Resene Wan White.



building industry, so we took the opportunity to work on our place,” Sarah says.

“We didn’t want to knock the original cottage down. It had a warmth to it, and we wanted to do things sustainably. While its layout wasn’t great for kids, its bones were great.”

They designed around original features in the cottage, such as a brick fireplace and archway. “We made most of our design decisions about six months out before the build, which made a huge difference to stress levels. Working as a husband-and-wife team was the highlight of the renovation. We were organised, and the build was on time, which is extremely rare in the industry.”

The difficulty came in moving into a two-bedroom unit with three boys under 10 for six months while they renovated. “It was certainly close quarters,” says Sarah.

The boys appreciated having their own bedroom when they eventually moved back into the renovated home. Thanks to a redesign of the original floor plan, bedrooms for the kids were carved out with plenty of added storage space, plus a mud room. The cottage also grew by 170 square metres; an open-plan dining and kitchen space was built, connecting to an al fresco area.

The home’s exterior makes a statement with weatherboards in Resene Double Foundry, a blue-toned charcoal. “We get lots of comments about the colour of our home. We painted our garage in Resene Double Foundry a while back to separate it from the house and loved it. We debated being super safe and painting the rest of the home in white, but then we thought, ‘Why not go nautical and bold?’”

Friends often comment on their rich colour palette, which ➤



Above: The open plan kitchen and dining area is a new addition to the house with bold Resene Double Foundry cabinetry and walls painted in Resene Wan White. The ceiling is Resene Half Wan White. "It's one of our favourite spaces to spend time in," Sarah says. "It feels quite grand and opulent."

Right: In the children's bedrooms, Sarah and Jared opted for bold but soothing colours. This one has Resene Flax walls with trims in Resene Black White. The walls in another child's room are painted in muted blue Resene Bunting.

Resene
Flax 

continues inside. Deep Resene Foundry is chic on the kitchen cabinetry, popping against Resene Wan White on the walls in the living space. "The deep charcoal tone makes other colours sing. In our living room, we have peplum architraves, and Resene Wan White adds crispness."

The family opted for different colours in the boys' rooms in the older part of the home. "We've gone gangbusters on the colour in the kids' rooms and went for Resene Flax in two of the boys' rooms, with Resene Bunting in the other."

Choosing colours for children's rooms can be tricky, Sarah says. "We asked them all for their favourite colours. One of my sons was keen on orange, so I got very excited looking at rich terracotta tones – I knew it would work beautifully with Resene Flax. Then he did a complete flip on me – as kids do – and said he wanted blue."

Sarah notes that choosing colours that complement each other and flow in a home is essential. "Their rooms are opposite each other in the hallway, so I wanted to find a green and blue that >





Above left: The master bedroom makes brilliant use of natural fibres and finishes, with fresh walls in Resene Wan White to create a carefree beachy feel.

Above right: This original brick archway anchors one corner of the living area against the Resene Wan White walls and cabinetry in Resene Double Foundry.

Left: "We wanted to create a home with colours that were classic and wouldn't date," Sarah says. "We didn't necessarily look to what's in style or on-trend now because we wanted that longevity." This transitional hallway is a perfect expression of that classicism with walls in Resene Wan White.

top tip

If you have an older character home and want a traditional colour scheme, check out the Resene Heritage colour palette at your local Resene ColorShop, or for a timeless colour scheme, check out the Resene Classics Collection.

 Resene Wan White





Hunterhome



Be in to **WIN***
Hunterhome
\$10,000
GIFT VOUCHER

Create a space you'll love with our design service ...and it's **FREE***

At Hunter Home, we recognise that no two people are the same. Our diverse range of furniture and homeware options means there are limitless possibilities to transform your home and **bring your vision to life.**



Free in-store design consult



In-home design consult



Colour & styling tips



Room layout & styling



Material samples, moodboards & floor plans

Design Service available at the following Hunter Home stores:

Auckland - Sylvia Park Lifestyle Centre | Wairau Park
Westgate Lifestyle Shopping Centre
Christchurch - Moorhouse Avenue

Pop in to one of our 11 stores nationwide to grab a deal today.

*T&C's apply

 hunterhome.co.nz
 [hunterfurniture](https://www.facebook.com/hunterfurniture)
 [hunter_home_furniture](https://www.instagram.com/hunter_home_furniture)
 0800 777 807





Above: The stunning outdoor room on the back of the home, with weatherboards in Resene Double Foundry and trim in Resene Black White, creates a stunning, functional link between the house, backyard and pool.

Resene
Double Foundry 

worked harmoniously together. Resene Flax and Resene Bunting were a great pairing, and they're colours that will mature with the boys as their rooms evolve."

In the boys' bathroom, Sarah's playful use of colour continues. Resene Fossil is deep yet soothing on the VJ (vertical joints) feature wall. "We put tiles in there that are a lovely creamy colour, and we wanted the feature wall to work with those. That cream tone can be challenging, but we found Resene Fossil and were super excited."

The master bedroom is laidback yet luxurious, with neutral furnishings and Resene Wan White on another vertical feature wall behind the bed. "The beautiful thing is that textures on walls can considerably change how a colour looks. The VJ cladding brought Resene Wan White to life and changed its feel. It pops against a timber shelf we ran above the bed."




The house won the Master Builders Queensland Award for Best Home Renovation/Remodelling Project from \$650,000 up to \$1 million on the Gold Coast and it's not just the judges who enjoy the home's design. Sarah says visiting friends and neighbours describe it as a "warm hug".

"It's rich in colours, warm in its textures and isn't too pretentious. It's a home people feel welcome in, and we can have a great family life here." Sarah says she didn't want to design the house in a Hamptons style, with the roaring surf of Burleigh Heads just down the street.

"It just isn't that. It's a near-100-year-old family home with a rich history. It took a decent amount of planning to ensure we kept the integrity of the original home while maintaining a more modern aesthetic that won't date." Sarah says her Resene colours radiate warmth and echo the cottage's character. "Colour is there to be enjoyed in life. Why not get experimental?" **H**

design Davey Constructions www.daveyconstructions.com
words Nicole Barratt
images Brock Beazley

→ *turn the page for alternative looks for this living space...*

Resene
Wan White 
Resene
Flax 
Resene
Bunting 

paint it right

Choose the right Resene colours and paints for the job.

surface saviours

Resene SpaceCote Kitchen & Bathroom is a low sheen interior paint ideal for walls in wet and steamy areas, such as kitchens, bathrooms and laundries. The waterborne enamel contains antibacterial silver and MoulDefender for added hygiene in these spaces.



Above: Resene Double Foundry is carried through to the cabinetry in the laundry, lending it a sophisticated edge.

come to the dark side

Resene Lumbersider Low Sheen is an exterior paint that's ideal for a wide range of projects including timber weatherboards, fences and concrete surfaces. If you're choosing a dark colour, opt for a Resene CoolColour. The heat reflective technology will help keep surfaces cooler and provide additional UV protection.

decking out the exterior

Elevate your outdoor area by staining your deck with Resene Woodsman Decking Oil Stain. Simply wash your deck with Resene Timber and Deck Wash before staining in your favourite hue. Try using a Deckmaster brush for easier application. Refresh wooden furniture with Resene Furniture and Decking Oil.

 Resene
Fossil  Resene
Black White


alternative solution - adaptable outdoor living



Above: Resene Wallpaper Collection 687811 on the ceiling is a talking point in this outdoor area. Walls painted in Resene Undercurrent pick out blue tones in the wallpaper. Portico and trim areas are painted in Resene Alabaster. The decking is stained in Resene Woodsman Driftwood. The kitchen is fully kitted out with a home-built pizza oven, barbecue and built-in gas cooker. The dining room set with outdoor chairs and coffee table from Outside Space helps create a perfect multi-use entertaining space. The oval mirror from Freedom reflects the light and the garden to make the space feel bigger. The planter is from Camden Co, the faux plant is from Freedom, the serving dishes are from Cittá and the string lights are from Mr Ralph. The space is finished with a privacy screen in clumping bamboo from Charlie's Bamboo.

top tip

Always stain or paint your deck and allow it to cure before firing up your barbecue. Finishes like Resene Woodsman wood stain or Resene Walk-on paint will help protect your deck from spill food.

Resene Alabaster 

entertaining for everybody



Designer **Christine Hodges** suggests this alternative scheme:

I wanted to do something different and make this a fun, adaptable and flexible space where the furniture can be moved around depending who is entertaining and how. Maybe it's a formal dinner, a buffet, a dance floor, a games night, a movie night, maybe just relaxing reading a book or watching the children in the pool. I wanted the area to have the flexibility to be dressed up or down. I also kept everything at a low profile so as to not interrupt the view to the pool and garden. I added Resene wallpaper on the ceiling because everyone forgets the ceiling is a perfect place to add a paint colour or a wallpaper as it doesn't fade, it creates interest and can be dramatic. The floor is a sandy colour paired with blue walls to invoke the beach, blue skies and water. Because the wallpaper is bright and bold, I've kept the blue walls to a more subdued shade that still connects to the feature ceiling.

email christine.hodges@resene.co.nz **web** www.resene.com/colourconsult

Resene Undercurrent



Adair oval mirror
Freedom
www.freedomfurniture.co.nz
0800 262 673

Resene Nepal



Weber Family Q
Weber
www.weber.com/NZ
0800 493 237

Resene Gunmetal



Resene Wallpaper Collection
687811
Resene ColorShops
www.resene.com/wallpaper

Resene Oasis

Festoon String Lights
Mr Ralph
www.mrralph.co.nz
0800 677 2574



Resene Woodsman Driftwood

Bask outdoor chair
Outside Space
www.outsidespace.co.nz
027 452 1006



illustration
Malcolm White

alternative solution - sculptural shelter from the elements



Above: Sleek wood battens stained in Resene Woodsman Cedar perfectly frame this outdoor space, enclosing it while keeping its connection to the garden. The floorboards have been painted in Resene Mist Grey for a fresh note that works well with the side wall panelling in Resene Bel Air and contrasts with the bold brickwork, the deep maroon of the outdoor couches from Matisse and the side cabinetry in Resene Brown Pod. The whole look is anchored by the dark teal Resene Celtic weatherboards, echoed in the Resene Seaweed-hued foliage, with pots and décor pieces in Resene Loch Ness. Brick red accent touches in Resene Arriba and fresh trim areas in Resene Barely There match the pale tones of the chairs and dining table from Matisse, to bring the whole look together. The wall-inset Escea outdoor kitchen will ensure nobody goes hungry. Mood lighting comes from the side lamp and the round outdoor light table from ECC. The final touch is a Centor insect screen from Unique Hardware Solutions across the door to keep uninvited pests out. Outdoor rug and merino throw from Ico Traders, stump side table from Treeology, cabinet handles and tray on table from Powersurge, folding ledge display shelves from Made of Tomorrow, wood stacker from Matilda and the Metalman, patterned cushions from Tessuti, plain cushion from Weave Home, pottery from Rachel Carter Ceramics, top shelf ceramics from Collis Studios, planters from ECC.

top tip

Finish painted flooring in Resene Concrete Wax for extra protection.



Resene Barely There Resene Bel Air Resene Mist Grey


comfort and relaxation at day's end



Architect **Lisa Day** suggests this alternative scheme:

I designed this colour palette with the end of the day in mind; as the sun is setting, no matter the season. Outdoor rooms are great for spending time in during the evening, cooking around the open fire and spending time with good friends. Ensuring that you are well protected from the elements (whether it be wind or insects) is important, while textural finishes invite and inspire you to slow down and relax. I've chosen colours that have natural origins but with the intensity turned up. They are ready to respond beautifully to the setting sun and firelight after a day at the beach, in the garden or at work. The finishes are architectural, raw and authentic. Timber, Corten steel, concrete and earthy hues are combined with beautiful handmade ceramics that invite touch. Accents of deep blues and greens are reminiscent of the colour of deep water as the sun goes down. The furniture is sculptural, resilient yet luxurious. Rounded edges and patterns connect you back to the natural world and the fabrics are soft and inviting. Lighting is discrete and encourages a relaxing mood to the tactile and warm space.


email lisa@donnellday.co.nz phone 021 136 3730

Resene Seaweed 

Resene Celtic 



Collis ceramics
Collis Studios
www.collisstudios.co.nz

Resene Woodsman Cedar 



Flos Bellhop table lamp
ECC
www.ecc.co.nz
09 379 9680

Tobi Ishi dining table
Matisse
www.matisse.co.nz
09 302 2284

Resene Brown Pod 



Resene Arriba 

Butterfly outdoor sofa
Matisse
www.matisse.co.nz
09 302 2284



Resene Loch Ness 

Rachel Carley Design cushion
Tessuti
www.tessuti.co.nz
09 376 4802



illustration
Malcolm White



Resene
Designer White

Resene
Eighth Black White

Resene
Merino

Resene
White Pointer

Resene
Half Truffle

Resene
Foggy Grey

white hot

Interior designers and colour experts share tips for finding the perfect white or neutral for your home.

One of the most common comments Resene staff, interior designers and architects hear is: "There are so many whites." It's true - there are 360 colours ranging from bright white to charcoals in the Resene Whites & Neutrals fandeck and many more whites in other Resene colour chart collections. While Resene Black White, a cool white with a hint of black, has been Resene's most popular paint colour for the past five years (followed closely by Resene Alabaster), these whites might not be the best choice for every home. From creamy and dreamy to cool, bright and beautiful, every white

and neutral in the Resene Whites & Neutrals colour collection has a time and place, says Resene Canterbury Design Advocate Brooke Calvert. It's time to explore neutral territory.

Where to start

There is a reason that Resene's top 20 colours are all whites and neutrals – versatility. White goes with everything and can be an excellent unifying colour. Says Brooke: "There are so many different shades of white. Cool shades such as Resene Sea Fog often work well if you are working with a modern new home. With a more traditional style home, warm, soft

<input type="checkbox"/> Resene Alabaster	<input type="checkbox"/> Resene Sea Fog	<input type="checkbox"/> Resene Chalk Dust
<input type="checkbox"/> Resene Poured Milk	<input type="checkbox"/> Resene Rice Cake	<input type="checkbox"/> Resene Pearl Lusta
<input type="checkbox"/> Resene Black White	<input type="checkbox"/> Resene Half Merino	<input type="checkbox"/> Resene Concrete
<input type="checkbox"/> Resene Linen	<input type="checkbox"/> Resene Conch	<input type="checkbox"/> Resene Sorrento

whites such as Resene Half Spanish White will be complementary, especially if there is a lot of native timber. For something in between, greige – where grey meets beige – is a good option,” says Brooke.

Resene Colour Consultant Amy Watkins suggests choosing whites to complement the home’s chattels when renovating. “Start by choosing flooring, tiles, carpet, laminate and wood, as these will soon narrow down paint or stain colour choices,” she says. “For example, if you have warm, neutral-coloured carpet, it’s best to go with a warm white such as Resene Chalk Dust. If the carpet contains grey tones with a slight blue, you could use Resene Poured Milk.”

Warm vs cool

Whites with brown or red undertones are considered warm neutrals; whites with a violet-grey or blue undertone are considered cool. Green, as an undertone, is considered an in-between colour because it is made of both yellow and blue. Examples of green-based whites include Resene Thorndon Cream, Resene Rice Cake or Resene Linen. “Often, the exciting colours in your home dictate whether you have to go cool or warm,” says interior designer Kate Alexander of Places & Graces. “To determine if your existing walls or trims are warm or cool, hold up a neutral colour swatch that’s a very yellow neutral such as Resene Double Spanish White or a very cool colour like Resene Designer White, and observe whether the tone matches or contrasts.”

To learn more about warm vs cool colours, see ‘Whites & Neutrals decoded’ on page 33.

Create variation

One myth about white is that it can make a room appear light and airy – even bigger. In fact, using the same colour everywhere can make a room feel cramped as the eye cannot take in the space’s height and depth.

Darker colours on furniture or flooring can ground the room to help the eye perceive the distance between the ceiling and the floor, as can varying the strength of the paint and the sheen level.

“When it comes to a neutral colour scheme, Resene makes it easy because of the way they have the double, half, quarter etc strengths all displayed together in one sample card,” says interior designer Megan Harrison-Turner.

“When taking advantage of Resene’s tonal colours, change the gloss levels on different surfaces. For example, use Resene SpaceCote Flat on the ceiling, Resene SpaceCote Low Sheen on walls and Resene Lustacryl semi-gloss on trims. Glossy surfaces will read as slightly lighter in colour because gloss is more



Above: Resene Rice Cake on the floor and wall is a green-based white that ties in with both warm and cool tones. Door painted in Resene Duck Egg Blue, console table in Resene Half Innocence, basket in Resene Sorrento, artwork squares in Resene Sorrento and Resene Conch, clamshell in Resene White and vases and other ornaments in Resene Duck Egg Blue, Resene Sorrento and Resene Rice Cake. Rug from Mocka, tealight holder from Indie Home Collective.

Opposite: When creating a tonal scheme using multiple strengths of the same white hue, add additional texture by painting some elements in different sheen levels. The wall is painted in Resene SpaceCote Flat tinted to Resene Triple Black White and the fireplace is in Resene Lustacryl semi-gloss tinted to Resene Half Black White. The faux tile pattern inside the boarded-up fireplace is created using Resene Triple Black White and Resene Eighth Black White, flooring in Resene Colorwood Breathe Easy, side table in Resene Triple Black White and vases and DIY artwork in Resene Lustacryl semi-gloss in Resene Eighth Black White. Sofa and coffee table from Soren Liv, chair from David Shaw, cushions from Baya.


neutrals by theme







Brooke Calvert suggests whites and neutrals for every mood.

- **Romantic and warm:** Resene Quarter Bison Hide, Resene Eighth Bison Hide
- **Earthy and crisp:** Resene Thorndon Cream, Resene Linen
- **Cool and modern:** Resene Alabaster, Resene Black White, Resene Sea Fog
- **Creamy and comfortable:** Resene Pearl Lusta, Resene Spanish White
- **Soft and moody:** Resene Foggy Grey, Resene Concrete
- **Restful greige:** Resene White Pointer, Resene Merino, Resene Half Truffle

<input type="checkbox"/> Resene Half Black White	<input type="checkbox"/> Resene Triple Black White	<input type="checkbox"/> Resene Colorwood Breathe Easy
<input type="checkbox"/> Resene Half Spanish White	<input type="checkbox"/> Resene Spanish White	<input type="checkbox"/> Resene Quarter Bison Hide
<input type="checkbox"/> Resene Double Merino	<input type="checkbox"/> Resene Thorndon Cream	<input type="checkbox"/> Resene Double Spanish White
<input type="checkbox"/> Resene Eighth Bison Hide	<input type="checkbox"/> Resene Duck Egg Blue	<input type="checkbox"/> Resene Half Innocence



 When you are comparing whites and are finding it difficult to see the undertones, place a piece of white printer paper underneath each swatch. This will help your eyes to see the undertone in the Resene paint swatch.

- | | | |
|---|---|---|
|  Resene White |  Resene Duck Egg Blue |  Resene Half Dusted Blue |
|  Resene Quarter Sea Fog |  Resene Triple Sea Fog |  Resene Half Lemon Grass |

Above: If painting walls a colour isn't an option in your home, one way to introduce colour is to paint trims, such as skirtings or architraves, in a colour such as Resene Half Dusted Blue. The blue on the trims ties in with the cool white tones of the Resene Double Sea Fog on the floor and door, Resene Quarter Sea Fog on the wall and coffee table and the sideboard in Resene Triple Sea Fog. The dusty-grey tones of Resene Nomad in the DIY artwork (also featuring Resene Double Sea Fog) help this taupe brown work with cooler colours in this room. Vases in Resene Quarter Sea Fog, Resene Nomad and Resene Double Sea Fog. Chair from Kiosk, artwork from City Hall.

-  Resene Credence

reflective of light." Megan suggests that instead of pure white (Resene White), a classic renovator choice, use the lightest colour available on the sample card for ceilings, aiming for no more than a half or quarter strength of your main wall colour.

There are moments when you might want to use the same colour on the walls and ceiling. "In some rooms, it's a good idea to use the same colour to simplify the architecture and disguise certain elements – for example, a crooked wall or a cornice you don't like," says interior designer Kate Alexander. "Use different sheen levels to create variation."

Pale and interesting

The risk of painting a room white from top to toe is that it can appear flat, like the pages of a brochure, even if you introduce pops of colour. Megan says two things are needed to make a neutral room sing:

- A source of interesting lighting other than overhead lighting.
- Three different types of texture.

She says lighting can be as simple as a table lamp in

the corner. "To create texture, a good option is timber flooring with its natural colours knocked back, such as one finished with Resene Colorwood Whitewash. Remember to introduce texture. A two-tone wall created with Resene FX Paint Effects medium is a good option, as are textured textiles and rugs."

Another way to keep a white room dynamic is by remembering Megan's styling rhyme.

"This is my adaptation of the old bridal rhyme," she says. "When styling a room, look for: 'Something old, something new, something shining, something hue.'

"The 'something old' could be an heirloom or op-shop treasure, which work well because patina is a way to show texture, personality and character. The 'something new' could be fresh Resene paint or new bedding, 'Something shining' could be metal or glass or something painted in Resene FX Metallic paint to create visual texture as a contrast to the older pieces in the room. The 'something hue' is either about keeping the tones similar or, if the room has colour, 'hue' refers to repeating the colour on a different scale and a different plane to the wall colour."

Pairing colours

If you're keen on using statement feature colours, consider your colour palette before committing to one neutral colour throughout. For example, if your heart is set on Resene Duck Egg Blue, a yellow neutral such as Resene Pearl Lusta might detract from the blue's chalky grey qualities. A softer choice might be a tonal white with grey undertones like Resene White Pointer. With bright or dark feature walls, consider the reflections on white walls.

"Whites often have a high reflectance value, which you can find neighbouring colours reflect onto easily," says Brooke. "For example, if you painted a hot-pink feature wall and had a sofa to match, it's very likely the colour will come through with a soft pink hue on crisp white walls. You can achieve a softer approach using a tonal scheme rather than a full-on colour block."

How to test

Use Resene testpots or A4 drawdown paint swatches to test the paint colour in your home. This will help you observe how the colour 'shifts' in different lighting and at different times of the day or night.

Try your painted swatches in different parts of every room you want to use that colour in – or every side of the house if you're painting the exterior – to see how the colour changes as the available light changes.

Place your painted swatches next to key furniture items like sofas to see how the colours work together, or if you're doing a full >











comparing colours

Resene Thorndon Cream on the back wall of this bedroom (above) and dining room (left) is one of Kate Alexander's favourite neutrals because of the versatility of its green and grey undertones, which pair well with greens and earthy colour palettes. Resene Triple Thorndon Cream on the skirting grounds the palette, and the trim adopts greener tones depending on the colours next to it. Resene Cobblestone, used on the front wall of this dining room, has a khaki undertone, which diffuses the intensity of the green on the skirting and back wall, while Resene Credence in the bedroom is a softer brown. It is more of a contrast with the back wall, making the back wall appear greener and creamier.

Above: Back wall of this bedroom painted in Resene Thorndon Cream, skirting in Resene Triple Thorndon Cream, floor in Resene Quarter Thorndon Cream and front wall in Resene Credence. DIY artwork created with Resene EzyFill and Resene Quarter Thorndon Cream. Vases in Resene Cobblestone and Resene Quarter Thorndon Cream. Rug from The Ivy House.

Left: Back wall of this dining room painted in Resene Thorndon Cream, skirting in Resene Triple Thorndon Cream, floor in Resene Quarter Thorndon Cream and front wall in Resene Cobblestone. Dining table in Resene Half Lemon Grass and chair in Resene Thunderstorm. Vases and ornaments in Resene Cobblestone, Resene Quarter Thorndon Cream, Resene Double Ash, Resene Thunderstorm and Resene Brown Sugar. Home Time artwork from endemicworld.

 Resene White Pointer	 Resene Pearl Lusta	 Resene Colorwood Whitewash	 Resene Double Ash
 Resene Double Sea Fog	 Resene Nomad	 Resene Brown Sugar	 Resene Thunderstorm

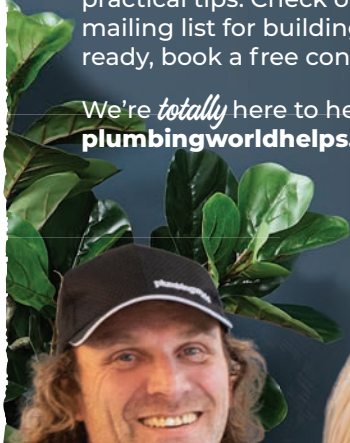
Looking for inspiration?

Or need help with your project?

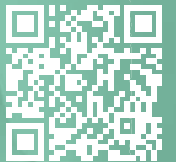
We've got the place for you — Plumbing World Helps.

We've called in a few experts to offer friendly guidance, help, and practical tips. Check out our new video series and subscribe to our mailing list for building and renovation insights — and when you're ready, book a free consultation with one of our showroom specialists.

We're *totally* here to help, so get started today.
plumbingworldhelps.co.nz



Get all the tips and tricks you need for your project — from the people who know.
plumbingworldhelps.co.nz



Stu & Amy Plumber/Interior Stylist

Branches Nationwide
plumbingworld.co.nz

plumbingworld *helps*

Whites & neutrals decoded

When flicking through the Resene colour charts, you'll notice a colour code on the front under the colour chip and an LRV percentage on the back. For example, Y91-009-076 and LRV 78% for Resene Merino.



The first letter of the colour code indicates what type of colour it is. The last three numbers of the colour code indicate where it sits on the colour wheel, with red being 0. This is important with off-whites because it will indicate some of the paint's undertones.

Where colour groups lie on the colour wheel

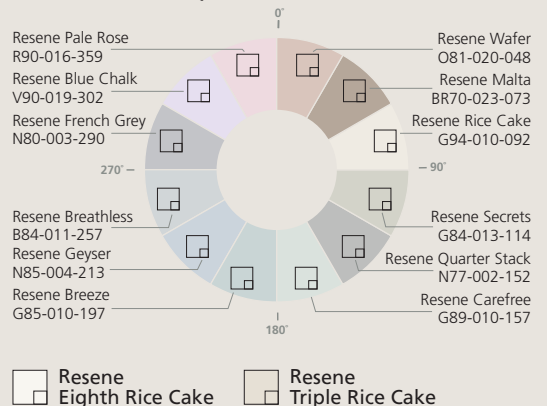
R (Red)	=	357-39 inclusive
O (Orange)	=	40-69 inclusive
Y (Yellow)	=	70-90 inclusive
G (Green)	=	91-204 inclusive
B (Blue)	=	205-284 inclusive
V (Violet)	=	285-356 inclusive

There are three extra colour groups:

N (Neutral)	=	Very low saturation
BR (Brown)	=	Part of the red, orange and yellow spectrum with lower saturation and specific luminance
M (Metallic)	=	Metallic colours

The LRV percentage of a colour is measured using a spectrophotometer. It indicates the brightness of a hue or proportion of light a surface reflects compared with the amount of light that falls on that surface. 100% indicates the brightest white; a pure black would have an LRV of 0%, absorbing all light. So, based on the colour chart information, although Resene Merino might appear slightly grey, the Y in the colour code indicates a yellow base colour and the number 076 indicates it is approaching the green part of the spectrum, which is what gives Resene Merino its green oxide quality. Resene Merino has a reasonably high LRV percentage of 78% but is not as bright as Resene Alabaster, which has an LRV of 92% and will appear brighter. Matte paint or painted textured surfaces absorb more light and will reduce the perceived reflectance of a colour making it seem darker, but will not change its stated LRV. Light, glossy and/or smooth surfaces reflect more of the light that falls on them and will make the colour seem cleaner and brighter.

colour wheel position



- Resene Alabaster
- Resene Eighth Pearl Lusta
- Resene Black White
- Resene Foundation
- Resene Athena

Above: Don't be afraid to mix cool and warm tones. Resene Ted, on this nursery's batted feature wall and crib, is a light grey from the latest Resene The Range fashion collection. This colour could easily pair well with cool-toned neutrals, such as Resene Black White. However, Kate Alexander has opted for yellow-toned neutral Resene Pearl Lusta on the trims, Resene Eighth Pearl Lusta on the walls and pink-toned Resene Colorwood Breathe Easy on the flooring. The yellow tones emphasise the blue qualities of the grey colour. "Many villas are locked into cream colours because of their native timber finishing. Resene Eighth Pearl Lusta is still a cream, but using this light strength and teaming it with a cool-toned colour is a way to modernise a traditional cream-toned space," says Kate. Coat rack in Resene Pearl Lusta, side table in Resene Eighth Pearl Lusta and Resene Tuae Tuae, bag details in Resene Ted and rainbow toy in Resene Ted, Resene Tuae Tuae and Resene Eighth Pearl Lusta. Artwork by Samantha Totty from endemicworld.

- Resene Solitaire
- Resene Pearl Lusta
- Resene Ted
- Resene Silver Chalice
- Resene Tuae Tuae
- Resene Cargo
- Resene Cobblestone
- Resene Carpe Noctem

makeover, try your painted swatches next to curtain, carpet and upholstery fabric swatches. Make sure you also experiment with Resene testpots and painted swatches in any contrasting or trim colours to make sure everything works together in all lights.

If something isn't working, remember that most whites are available in different strengths – for example, Resene Rice Cake comes in six different strengths from Resene Triple Rice Cake to Resene Eighth Rice Cake. You may find that different strengths of the same neutral work better in different rooms

Future thinking?

For more than a decade, cool, flat greys and whites have been the favourites in the Resene top 20 colours, including best-sellers Resene Black White and Resene Alabaster, though there is a trend towards more dynamic hues. "There has been a shift to warmer and more complex options, such as character neutrals, which feature more depth in their subtle undertones," says Brooke.

"Look out for biscuit beiges, blush suedes, steeped tea toned whites, olive taupe, slate and stone and complex pewters. Resene Cobblestone, Resene Solitaire, Resene Athena, Resene Foundation, Resene Cargo, Resene Carpe Noctem and Resene Silver Chalice represent the new neutrals. Immensely flexible thanks to their rich and complex undertones, each of these hues makes a great base for those who like to change up their accent décor regularly."

- projects Kate Alexander, Megan Harrison-Turner, Vanessa Nouwens, Melle Van Sambeek
- words Emma Rawson
- images Bryce Carleton, Melanie Jenkins
- Resene Rice Cake
- Resene Colorwood Breathe Easy

top class

Decorate top-to-toe by incorporating colour into your ceiling.

Resene
Half
Bokara Grey

top tip

It's best to paint the ceiling before the walls and trims. This is because it's easier to cut into the top of the wall than the edge of the scotia, plus paint drips won't affect already finished areas. Choose Resene SpaceCote Flat for the most washable finish, Resene Earthsense Ceiling Paint for the highest renewable content or Resene Ceiling Paint. All are low odour, smooth finishes with Environmental Choice approval.

Resene
Half Black White

Left: Atlas Architects in Victoria, used colour to accentuate the dramatic architecture of the raked ceiling of this renovated 1980s farmhouse. The main living, dining and kitchen area ceilings are painted in Resene SpaceCote Low Sheen tinted to Resene Half Bokara Grey. The walls are in Resene Ironsand, a softer-tone charcoal, which differentiates them from the ceiling and makes it appear as if the ceiling is floating.

Resene
Ironsand

They're one of the most overlooked parts of the home, but ceilings can be transformative. Michelangelo knew it when he painted his heavenly scene in the Sistine Chapel. Paul César Helleu and Charles Basing got it when they painted New York's Grand Central Station green and gold. It's only in the past 70 years that white flat ceilings have become the norm. But decorative and colourful ceilings are having a renaissance as many designers and homeowners start seeing ceilings as an opportunity to add design flair and cosy comfort.

Fifth element

Think of ceilings as a fifth wall just begging to be painted or wallpapered, says interior designer Kate Alexander of Places & Graces. Painting a ceiling can add drama and create cosiness. "Dark, dramatic ceilings are great in spaces where you want to create intimacy, such as dining rooms, sitting rooms, studies or bedrooms," says Kate.

"A bold-coloured ceiling can make a space feel super cosy or glamorous. The cocooning effect is amplified if the same colour is used on the ceiling and all the walls, particularly if it's a darker colour."

Resene Colour Consultant Amy Watkins recommends a flat finish on ceilings to hide imperfections; Resene Ceiling Paint is a flat paint with a low splatter formula specially formulated for the job. For a more washable finish try Resene SpaceCote Flat, or choose Resene Earthsense for its higher renewable content.

"I always go for a flat finish on ceilings as imperfections will often get highlighted by lighting if you use a higher-gloss finish. Resene

SpaceCote Flat with Resene Fly Deterrent would be my top choice for ceilings. The deterrent additive helps to discourage flies from settling on the surface, reducing the size and number of fly spots," says Amy. If wallpapering a ceiling, opt for an extra washable design. It can be fiddly to wallpaper a ceiling yourself, so take your time and enlist the help of another pair of hands – it's a two-person job.

Distraction tactics

Painting or wallpapering ceilings is a common optical trick used by interior designers; it even has a name – diversion theory. "Painting your ceiling a dark colour is quite useful if you want to employ diversion theory – that is, drawing your attention away from certain aspects in a space," says Kate.

"For example, I decorated a home recently, painting the ceiling in Resene Big Stone. It not only made the space feel more colourful but also diverted attention away from some architectural quirks. The room had been extended over the years, and all the entryways and windows were at different heights. It would have accentuated the differences if we'd used a feature colour on the wall, but the dark ceiling colour unified the space," says Kate. According to Kate, using the same colour on the walls and ceiling can help disguise uneven or crooked walls. However, consider your floor colour when opting for a dark ceiling and lighter walls. A dark-coloured ceiling paired with dark flooring and lighter walls might have a 'sandwich effect'. "It will look like you have shortened the walls," adds Kate.



top tip

Add Resene Fly Deterrent to your ceiling paint to reduce the size and appearance of fly spots.

Left: This villa has been modified over the years leading to windows and doors at different heights. Kate Alexander chose Resene Big Stone for the ceiling and Resene Half Black White for the walls and skirtings to tie the space together while disguising architectural quirks. The adjoining office ceiling and walls are also Resene Big Stone.

Resene Big Stone 



Devil in the detail

Many heritage homes have gorgeous detailed mouldings, cornices and ceiling roses that can be highlighted with paint. "If you want to highlight heritage ceiling features, change the gloss levels on the roses or mouldings with Resene Enamacryl gloss or Resene Lustacryl semi-gloss while still using the same colour as the rest of the ceiling. This will create a soft two-tone shadowy effect," says Amy. Another way to amp up the drama is to create a picture-frame effect using a different colour on the cornices to the main ceiling.

Hall pass

Hallways are an excellent place to start when incorporating colourful ceilings into your home, particularly modern homes with flat ceilings.

Hallway ceilings can also guide guests to the more public areas of your home. "A colourful ceiling draws your eye down a long hallway past bedrooms and private spaces to the rooms you want guests to travel to," says Kate.






For those nervous about trying a colourful ceiling, Kate says to give it a go. "Painting the ceiling a colour is one of my favourite things to do, and it gives you a lot of decorating freedom." **H**

design Atlas Architects www.atlasarchitects.com.au
Burgess Treep & Knight Architects www.burgessandtreep.com
Kate Alexander, Places & Graces www.placesandgraces.com

words Emma Rawson

images Kate Alexander, Tess Kelly www.tesskelly.net

Above: A ceiling painted in Resene Bunting guides visitors towards the dining room at the end of the hall. Walls in Resene Barely There and skirtings and door in Resene Half Barely There.

-  Resene Half Barely There
-  Resene Quarter Merino
-  Resene Half Merino
-  Resene Merino
-  Resene Bunting

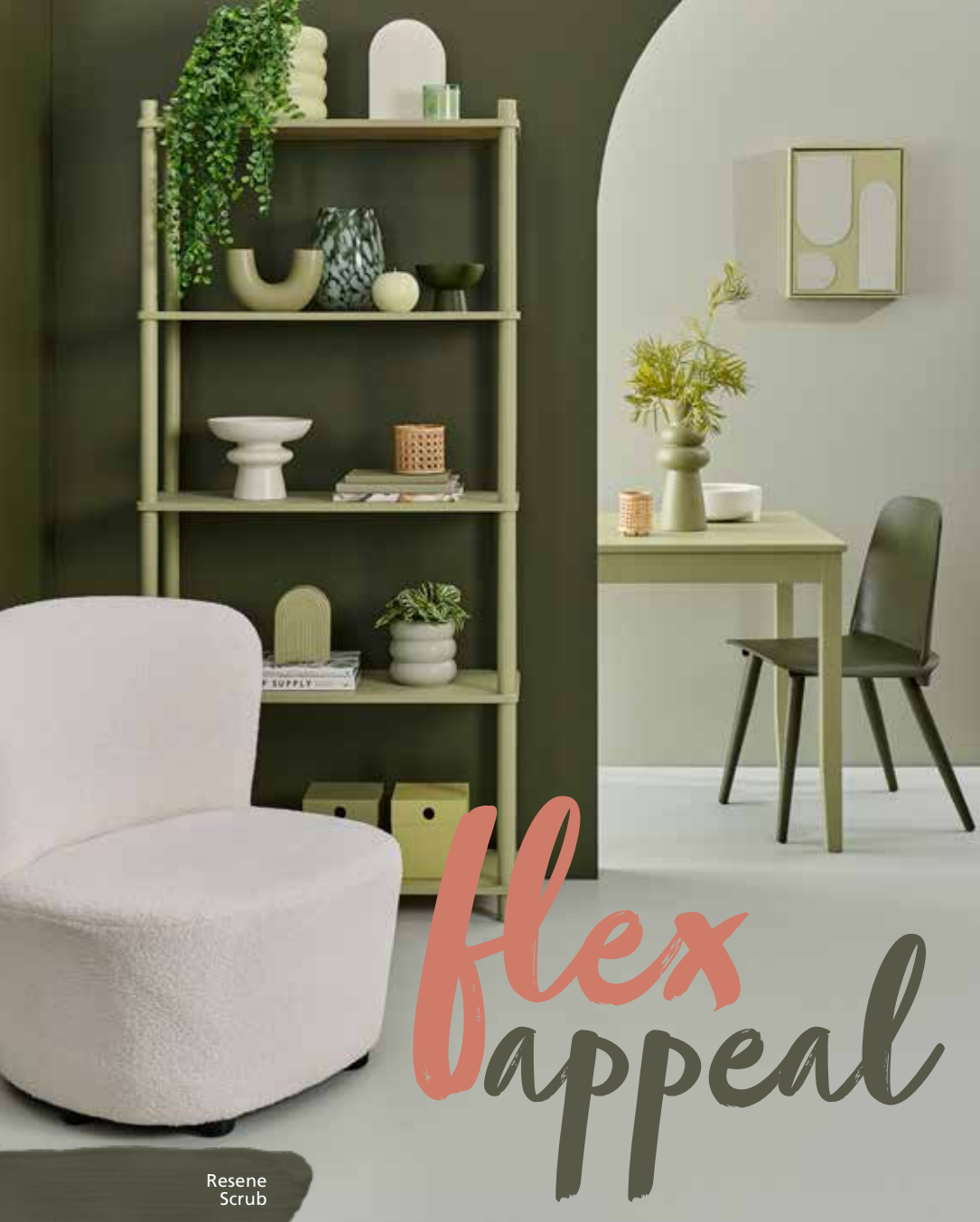
top tip

Ceilings reflect less light than walls so the same colour on the ceiling and wall will look darker on the ceiling. If you're choosing a lighter coloured ceiling, opt for a colour that is half strength or less of your wall colour. For example, if you use Resene Merino on the walls, opt for Resene Half Merino or Resene Quarter Merino on the ceiling and trims.



-  Resene Colour Me Pink
-  Resene Alabaster

Left: Lucy Treep of Burgess Treep & Knight Architects used Resene Colour Me Pink on the ceiling of this pergola with trims painted in Resene Alabaster, to add a sense of celebration.



Left: An easy way to connect two areas or introduce curves to a room is to create an archway by removing a door jamb and constructing an arch with plywood. Back wall in Resene Lemon Grass, arched wall and side wall in Resene Scrub and shelf and dining table in Resene Contour, with dining chair in Resene Scrub. DIY artwork in Resene Lemon Grass and Resene Contour. Vases, ornaments and boxes on the shelves in Resene Green Days, Resene Thorndon Cream, Resene Contour, Resene Lemon Grass and Resene Tic Tac Toe.

Opposite top: Screens are an effortless way to partition off an area in large rooms. The pink tones, arches and rounded shapes in this multifunctional space make it feel cohesive. Wall in Resene Forest Green, arch headboard and reading area side table in Resene Coral Tree. The edge of the Mocka rattan screen is painted in Resene Summer Rose, flooring in Resene Colorwood Breathe Easy, bedside table in Resene Meringue and DIY artwork, vases and other accessories in Resene Coral Tree and Resene Meringue. Bedlinen from Adairs, throw from H&M Home, cushions from Mocka, Adairs and H&M Home.

- Resene Bokara Grey
- Resene Green Days
- Resene Black White

Resene Scrub

Resene Tic Tac Toe

Resene Contour

Resene Lemon Grass

Resene Four Winds

Resene Kinship

Create stylish, functional spaces by following the principles of fluid design.

They say change is the only constant in life, but as we have all found, the pace of change has steadily increased over the past few years. The pandemic, which saw many of us working or learning from home, cast the spotlight on work/life balance and mental health. ‘Balance’ being the operative word as our homes now need to function in ways that offer greater flexibility.

Enter the rise of the ‘fluid home’. London-based architecture and design firm Alessandro Isola named a recent project the Fluid House, fluid referring to the fluidity of the design, not the home’s luxuriously long

lap pool. While the 700-square-metre floor plan and sky-scraping budget might be beyond the means of most of us, the design ideas – where the kitchen also functions as an office and walls hide storage and cooking areas – provide lots of design inspiration. Luckily for those without million-dollar budgets, there are many tricks to creating fluidity using Resene paint and design nous.

“Covid-19 has forever changed how we live in our homes,” says interior designer Vanessa Nouwens. “With many people working from home, even for a few days a week, there’s a greater need to create flexible spaces.”

What about open plan?

Since the 1990s, open-plan living has taken top billing, with real estate listings boasting renovated villas and bungalows with walls knocked away to



- Resene Contented
- Resene Thorndon Cream

Below: A simple cantilevered corner desk made from MDF can transform the corner of a guest bedroom into a makeup area or home workspace. The floating desk design doesn't overpower the bedroom, keeping the room relaxing. Walls and flooring in Resene Contented, desk in Resene Four Winds and side wall in Resene Kinship. Chair, basket and vase in Resene Bokara Grey, lamp base in Resene Black White, filing box in Resene Kinship and small scallop vase in Resene Contented. Resene Living duvet from Briscoes, cushions from Adairs.

combine kitchen, dining and living areas. Open-plan spaces have many benefits – more light, easier entertaining and socialising areas and better traffic flow among them. But there are drawbacks to open design. Open spaces can quickly look messy, particularly when you can see the kitchen dishes from the living area. Throw in family members working from home, and it's a recipe for stress. One way to make an open-plan space multifunctional is to create activity zones, says interior designer Megan Harrison-Turner.

Get in the zone

Colour and paint are some of the easiest and most affordable ways to create zones for eating, watching TV or quiet spaces. "One of the classic ways to create multifunctional zones is to 'zone' by colour using a different-coloured feature wall in the dining area, living space and kitchen," Megan says. "Add another colour for a study zone if needed." When choosing colours for different zones, consider how you might use them. For example, reading areas benefit from restful greens like Resene Scrub; spaces such as dining rooms – where lots of conversations take place – suit more energetic, yellow-toned greens like Resene Lemon Grass.

"Keeping the ceiling and flooring the same colour will link the spaces, and if possible, have the zones in different sizes to create better movement, progression and pace," says Megan. "This will also help each zone to feel distinctive. Adding a rug the same colour as the zone colour reinforces the division of space."

Versatile style


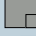

Choosing the right furniture pieces and using them unexpectedly can also help create zones. "An open



bookshelf can be used as a room divider, as can a sofa placed mid-room instead of against a wall. A trough of plants can be another good way to separate spaces," says Megan. Painting your floor a different colour using Resene Walk-on flooring and paving paint can partition off areas, and the floor can be easily painted over again if your lifestyle changes. Painted screens and room dividers are cost-effective ways to hide aspects you might not want to see, such as a desk in an open living area or bedroom. ➤

- Resene Alabaster
- Resene Meringue
- Resene Colorwood Breathe Easy
- Resene Coral Tree
- Resene Summer Rose
- Resene Forest Green



- Resene Comfortably Numb 
- Resene Quarter Chicago 
- Resene Antique Brass 

Left: Different-coloured flooring and shelving units can help section off parts of a room. Wall in Resene Comfortably Numb, flooring in Resene Colorwood Shade and Resene Colorwood Mid Greywash, cubby shelving in Resene Quarter Chicago mixed with Resene FX Paint Effects medium, chairs in Resene Dark Slate and Resene Emerge and vases in Resene Emerge, Resene Longitude, Resene Haven and Resene Dark Slate. Foldout desk with interior cork pinboard finished in Resene Colorwood Rising Tide and blackboard in Resene FX Blackboard Paint. Foldout sofa bed from Nood.

Resene Emerge

Resene Haven

Resene Longitude

Resene Dark Slate

Resene Shark

You could even paint the screen a different colour on each side to create flexibility – perhaps use a soothing hue such as Resene Kinship in a study area and a restful pink like Resene Contented on the side visible from the bed. “Study or office spaces can be incorporated into a living area, tucked into a corner or in a large cupboard space that you can shut off with louvred doors or a sliding barn door painted the same colour as the wall, so it blends in,” says Resene Colour Consultant Jackie Nicholls.

“It is often nicer to be working in a space that’s part of a living area rather than tucked away, and it’s also great for keeping an eye on kids studying.” Choosing the right furniture pieces is important. Modular sofas are handy if you often need to reconfigure your living area.

Adaptable rooms

Some rooms are easy to adapt as your lifestyle changes. Guest bedrooms are the obvious choice for a new meditation or yoga area as they are often simple, without many distractions but don’t overlook your garage, says Jackie. “A garage is another space that can double as a children’s play area, music space, a teenager’s hangout or a gym. A corner painted in a moody, warm colour, such as Resene Field Day, Resene Antique Brass or Resene Soiree, will give it an inviting vibe. Panels of Resene wallpaper add interest too. Have fun, or let the kids decorate with artwork created with Resene testpots.”

If you find your work situation evolves, your family expands, or you need to create a new space for balance and relaxation, the great thing about paint is it’s a cost-effective way to shake things up. Even better, it’s easy to paint over any of your designs should life throw up even more changes. H


projects Megan Harrison-Turner, Vanessa Nouwens, Melle Van Sambeek

words Emma Rawson

images Bryce Carleton

-  Resene Colorwood Shade
-  Resene Colorwood Mid Greywash
-  Resene Colorwood Rising Tide
-  Resene Colorwood Natural









-  Resene Half Spanish White

Top right: Use wallpaper on screens or partitions to create different zones in your home. Resene Wallpaper Collection 478013 creates a relaxed tropical space for reading, separated from the dining area with neutrals such as Resene Colorwood Natural, Resene Nocturnal and Resene Half Spanish White.



Right: Space under a staircase can become a desk area, storage or even a reading nook. Resene Wallpaper Collection 939521 creates warmth and cosy texture in an otherwise stark industrial space. Layer the neutral colours by painting the stairs and shelving in Resene Alabaster and flooring in Resene Shark to create a fresh and dynamic look.



-  Resene Nocturnal
-  Resene Soiree
-  Resene Kinship
-  Resene Field Day
-  Resene Contented
-  Resene Alabaster


finding balance


When the odds seem stacked against you, this mindful craft project is a way to find peace.

Balancing rocks is an ancient practice stacked with meaning. In ancient Scotland, rock cairns were used to mark safe travel on hilly terrain, while Norse sailors used stacked rocks as navigational tools in treacherous water. In Japan, balanced stones were used to remember loved ones and as a mindful zen activity. One thing is universal: balancing rocks, blocks or stones on top of each other takes patience and focus. Stone-stacking in nature can impact wildlife such

as nesting birds, so why not try Tumi Ishi, a Japanese wooden-block stacking game that allows you to take up this mindful activity in your home or garden? Numerous studies have noted that painting and arts and crafts can help relieve stress and focus a restless mind.


These Tumi Ishi wooden blocks are stained with Resene Waterborne Woodsman wood stains and combine the best of both worlds, an arts and crafts project that's fun to play but relaxing to make too.

 Resene WB Woodsman Driftwood

 Resene WB Woodsman Warm Kwila

 Resene WB Woodsman Japanese Maple

 Resene WB Woodsman Riverstone

 Resene WB Woodsman Bark

You will need:

- Wooden offcuts
- Handsaw
- Fine grit sandpaper
- Resene testpot brush
- Resene testpots – we used Resene Waterborne Woodsman in Resene Japanese Maple, Resene Warm Kwila, Resene Bark, Resene Driftwood and Resene Riverstone
- Clean rag

Step 1: Cut your scrap wood into blocks of varying sizes. Use a handsaw to cut through each piece at different angles.


Step 2: Using fine grit sandpaper, sand the wood until it's smooth. Remove all sandpaper dust with a damp cloth.

Step 3: Using a Resene testpot brush, apply a coat of Resene Waterborne Woodsman in the colour of your choice. Allow the stain to soak into the wood for three minutes, and then use a rag to rub off any excess stain. Allow to dry completely, and then apply a second coat if required.

These wooden balancing rocks (Tumi Ishi) are stained in Resene Waterborne Woodsman in Resene Japanese Maple, Resene Warm Kwila, Resene Bark, Resene Driftwood and Resene Riverstone. Use Tumi Ishi as a mindful activity or play them as a game – the person with the highest stack wins. An international study from the Institute of Psychology at the University of Lausanne found that blues, greens and turquoise were colours that study participants associated with contentment and relief, making the wall colour Resene Welcome an apt choice for a wellness space. Tabletop painted in Resene Streetwise.

project Shani Luckman
image Bryce Carleton

 Resene Welcome

 Resene Streetwise



72 hour challenge

Professional painter Tegan Williams aka TradieGal uses Resene to revamp her bathroom and powder room over a long weekend.



Above: TradieGal Tegan Williams turned to Resene paints for a cost-effective, quick bathroom makeover.

Left: A Resene Flax floor adds an earthy, natural note to the otherwise monochrome space.

Below: The bathroom's old brown and yellow colour scheme had to go!



 Resene Flax



- Resene Lustacryl Kitchen & Bathroom
- Resene Sureseal (waterborne or solventborne)
- Resene Waterborne Smooth Surface Sealer
- Resene Walk-on Flooring and Paving Paint
- Resene Concrete Wax

TradieGal Tutorial: Bathroom and powder room makeover

Step 1: Before painting, fill in holes and imperfections in the walls with contract filler and allow it to dry.

Step 2: Sand all the walls in the bathroom and powder room using an electric sander. Use a sanding block on especially rough edges and hard-to-reach internal corners. Use a clean, damp cloth to wipe down the wall.

Step 3: If your walls and ceiling are old and water stained, seal the walls and ceiling using Resene Sureseal. First, cut around any objects fixed to the ceiling and walls, such as plugs, towel rails, vanities and the shower unit.

Step 4: Load up the roller and start coating the ceiling with Resene Sureseal, followed by the walls. Ensure your rolls are as long as possible along the walls to prevent hard stop-and-start lines.

Step 5: Once the sealer is dry, sand all walls and the ceiling using a pole sander before filling any gaps with gap filler. A good technique is to squeeze the tube over the area while pulling back. Then run the ball of your finger over the gaps, applying medium pressure to remove any excess and push the filler into the cracks before wiping down the area with a damp cloth.

Step 6: To paint the bathroom and powder room ceilings, use Resene SpaceCote Flat Kitchen & Bathroom (I used Resene Double Alabaster) and, for the walls, use Resene SpaceCote Low Sheen Kitchen & Bathroom (I used Resene Quarter Black White). Both are waterborne paints suitable for wet areas. When painting, always work from top to bottom, starting with the ceiling, first cutting in around light fittings or extractor fans.

Doing up your bathroom can be an expensive job. A brand-new bathroom and powder room weren't in our budget, but our bathroom's yellow walls and brown lino had to go. I decided to give it a bit of TLC using Resene paints to transform the walls, ceiling and flooring – and my friends can't believe the difference!

You will need:

- Contract filler
- Gap filler
- Sandpaper
- Resene SpaceCote Kitchen & Bathroom



Step 7: Roll over the ceiling, and then go along with your brush and cut in the scotia and any parts of the ceiling the roller misses. Apply a second coat once the first coat is dry.

Step 8: While the ceiling is drying, paint the trims and woodwork in two coats of Resene Lustacryl Kitchen & Bathroom (I used Resene Double Alabaster). You can also use this to paint wooden vanities or cupboards.

Step 9: Next, paint the walls with Resene SpaceCote Low Sheen Kitchen & Bathroom. Start by cutting in the bottom edge of the scotia, internal corners and the skirtings. Also cut around light fittings and woodwork.

Step 10: Use a roller to paint the main walls, starting about one roller width from the corner and rolling up and down the wall. To finish run the roller lightly the full height of the wall to lay off the paint for a smooth finish. Apply a second coat once the first coat is dry.

Step 11: Now it's time to start on the lino. First give the floor a good clean.

Step 12: Once dry, prime the flooring with Resene Waterborne Smooth Surface Sealer. This gives the paint something to grip on the vinyl surface. Let the sealer cure overnight.


Step 13: Paint the floor with Resene Walk-on flooring paint (I used Resene Flax), cutting in around the edges.

Step 14: Use a long roller to paint the entire floor. Apply two coats allowing dry time between each coat.

Step 15: Once dry, apply a smooth clear coating to the floor using Resene Concrete Wax for extra protection.

For more TradieGal Tutorials visit www.habitatbyresene.com/tips/tradiegal_tutorials. Follow Tegan on Instagram at [@tradiegal](https://www.instagram.com/tradiegal).


words Tegan Williams
images Sharisse Eberlein Photography,


 Resene Double Alabaster



bonus step

The old plastic sink and bathtub had yellowed with age, so Tegan replaced them with new black ones. If you have a metal bath that needs a refresh, you can rejuvenate the exterior with Resene Armourcote 221 and Resene Uracryl 402.

 Resene Blackjack

 Resene Quarter Black White

Made for New Zealand conditions



and a New Zealand way of life.



Nothing less than COLORSTEEL® - designed, tested and approved to stand up to New Zealand's unique environments and become a part of them. Reflecting a connection to the natural world around us, while protecting us from it, at its most extreme.

Discover the ideal solution for your project at colorsteel.co.nz



Resene Half Pearl Lusta

Resene Sunbeam

Resene Half Pale Rose

Above: A pared back colour palette in the right wallpaper can be a surprisingly effective way to create a sophisticated tropical retreat, like this room in Resene Wallpaper Collection 688153.



Resene Wallpaper Collection 687408



Resene Wallpaper Collection 687552



Resene Wallpaper Collection 466607

- Resene Wabi Sabi
- Resene Colorwood Rock Salt
- Resene Colorwood Mahogany

tropical touches

If you can't get to the tropics, bring the tropics to you.

Once the winter weather arrives, thoughts turn to warmer places and exotic holidays. Booking a tropical escape isn't always possible, but with a few drops of a Resene exotic print wallpaper and some touches of tropical colour you can create the sultry, sunny looks of your favourite holiday destinations quickly and cost-effectively at home.

Bold and leafy

Resene has a wide variety of wallpapers to transform any room into a tropical wonderland. You could try the leafy tropical jungle look of Resene Wallpaper Collection 687842 in muted earthy shades or go for the fresh green and gold of Resene Wallpaper Collection ONB102636002.

The fantasy escapism of Resene Wallpaper Collection 687408 works well as a feature wall in your tropical themed spaces paired with the mid-toned green of Resene Wabi Sabi and a few notes of Resene Pohutukawa. Add trim in Resene Quarter Spanish White, with flooring washed in Resene Colorwood Rock Salt, rattan furniture and soft cream linen cushions and you'll have a space that's both vibrant and refreshing; perfect for a sitting or living area.

Blank canvas

If you prefer a predominantly neutral backdrop, consider pairing it with a feature wall in a block colour like warm, gold Resene Wallpaper Collection 687552 or paint in Resene Sunbeam. With a plainer backdrop



Above: Try the soothing green and gold of Resene Wallpaper Collection ONB102636002 paired with rattan finishes and Resene Colorwood Breathe Easy on the floor for a fresh finish.

Top: Resene Wallpaper Collection 687835 offers a bold print in soothing colours for a sophisticated tropical look.

- Resene Welcome
- Resene Colorwood Breathe Easy

you can frame drops of a bolder print like Resene Wallpaper Collection 466607 as artworks, or add just one feature wall in the dreamy impressionist jungle print of Resene Wallpaper Collection 688184.

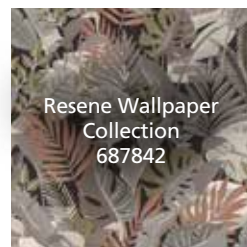
Cool and breezy

Going tropical doesn't have to mean bold bright patterns and shades. Try the monochrome palms of Resene Wallpaper Collection 688153. Pair it with brass finishings, a deep wood stain like Resene Colorwood Mahogany and forest greens like Resene Welcome, a neutral like Resene Half Pearl Lusta and a touch of soft pink Resene Half Pale Rose.

View a huge range of wallpaper at your local Resene ColorShop or get a taste of the new releases online at www.resene.com/wallpaper.

words Kerri Jackson

- Resene Quarter Spanish White
- Resene Pohutukawa



Resene Wallpaper Collection 687842



Resene Wallpaper Collection 688184



beautiful music

Hiwirori Hatea's guitar designs strike a chord.

Resene Pompadour

Resene Pohutukawa

Resene Red Berry

Above: Hiwirori, who is headed to the Florence Biennale later this year, says he paints his designs straight onto the guitar without planning or sketching beforehand. While some of his guitars have been used by artists performing on stage, Hiwirori admits that they often end up hanging on the wall. "They are definitely playable, but many people are so stoked with their guitar that they're too scared to touch it."

Right: Hiwirori names all his guitars. This design on a Takamine acoustic-electric guitar called Pitau a Manaia is in Resene Half Spanish White, Resene Black and Resene Pohutukawa.

Far right: This design, named Te Haerenga-a-Rangi, is painted in Resene Black, Resene Red Berry, Resene Pohutukawa and Resene Waiouru.

Many musicians tell stories in the words and melodies of their songs and waiata. Artist Hiwirori Hatea's MOKO guitars go a step further, transforming the instrument into a story. Few people would be brave enough to take a paintbrush to a Gibson guitar, but for the Mt Maunganui-based artist of Rongowhakaata descent, the wooden surface of a guitar is a blank canvas. This contemporary Māori artist hand-paints his MOKO guitars using Resene paints to create a personalised instrument telling a unique story about its owner and their whakapapa.

"It's similar to how tā moko (tattoo) tells your story of whakapapa and connections. I tell a story the same way as the tattoo, but onto guitars, so each story is personalised."

Hiwirori has always been creative. As a child, he loved watching his father draw, and he often had a pencil in hand. The death of his elder sister, who had always encouraged his artistic pursuits, pushed Hiwirori to make art his career, and he enrolled in the esteemed Māori art school Toi Houkura in Gisborne at 17. Under the mentorship of Derek Lardelli, Sandy Adsett and Steve Gibbs, Hiwirori found his love for music and Māori art – and Resene, the go-to paint brand at Toi Houkura.

But it was years later, while working in Dubai as a musician, that he painted kōwhaiwhai (traditional patterns) onto a guitar, creating his first MOKO guitar (which stands for My Own Kind Of Guitar), combining Māori performing and visual arts. He still plays the first guitar he designed.

Hiwirori says he isn't just an artist but a storyteller and he loves painting someone's journey onto a piece of art. "I hear some amazing stories from the people I make guitars for, and that inspires me. It keeps my mahi interesting because every single guitar is different and has a different story to tell."

He takes a creativity-first approach to his art, a process he learned in art school. Following the initial

client consultation, Hiwirori begins painting straight onto the guitar while his ideas are fresh in his mind – without planning or sketching beforehand. Although that might sound nerve-wracking, after many years and more than 90 guitars, it comes naturally to him, and he now gets straight to painting with colours such as his favourite, Resene Pompadour. From day dot, he has used Resene testpots in his process – the fast-drying and durable formula is perfect for fast-paced work.

"I've also painted murals with Resene paints that have lasted for years – they still look like they were painted yesterday!"

See more of Hiwirori's work at www.facebook.com/HiwiroriART.

words Hannah Twomey
images Christina Erena Hatea, Hiwirori Hatea



Resene Waiouru
 Resene Black

Resene Rice Cake Resene Half Spanish White

A photograph of a dining room seen through a doorway. The room features a wooden dining table and chairs, a large vase of orange and green flowers on the table, and a window with orange curtains. A black armchair with a patterned pillow is also visible. The walls are a mix of grey and yellow, and the floor is light wood. The text 'hello sunshine' is overlaid on the bottom left of the image.

hello sunshine

Ann was determined to go bold during the remodel of her Wellington deco-styled home, opting for bright colours tempered by more subdued hues.



Here's a challenge: Stop smiling as you walk up to Ann and Matt's home. The exterior is painted in elegant Resene Double Malta, teamed with a front door in Resene Rock Spray, a fiery orange ensuring a bright and cheery entrance to this Ngaio deco-style home. "I wanted people to smile and go, 'Oh!'" says Ann, sitting in a favourite spot in her Resene Streetwise living room. "I wanted to give visitors a clue they are about to enter a colourful world."

Creating that colourful world was challenging, so Ann invited interior designer Katie Peck from Kurio to lend an eye. "I knew what colours I liked but didn't know how to put them together. Katie set up a Pinterest page, and we started pinning colours. I was pinning a lot of navy and lighter blue tones, and golds and mustard. I do like yellow – it makes me happy."

Ann's colour choices for her and Matt's former home were "a lot less daring", with Resene Haystack a favoured neutral, but she wanted the colours in this one, which the couple bought over a decade ago, to be "a lot more adventurous". Despite her love of paint, the home's timber features were never going to see a paintbrush. "I love the look and warmth of the wood and how it glows against the colour."

Katie readily accepted Ann's invitation. "I love that she was so brave. People can find it hard to be different without solid direction from someone like a designer. It's hard to be sure they're making the right decisions. But if someone says, 'That's great, let's do it,' they feel more confident."

Client and designer had plenty of wall space upon which to enjoy their adventure as Ann and Matt – with Katie's help as an interior designer – reconfigured most of the house. They opened the kitchen

Opposite: Stormy Resene Trojan on the dining room walls contrasts perfectly not just with their wooden décor but also the vibrant, sunny Resene Thumbs Up in the connecting kitchen, framed by the trim and ceiling in Resene Quarter Bianca.

Above left: Ann was adamant she wanted colour to be a feature of the home but sought advice on using it well, including the choice of Resene Rock Spray on the front door which opens to the hallway in Resene Unwind.

Above right: Slate blue Resene Streetwise adds a cool contrast to the living room, while emphasising the connection to the outdoors.

Resene Thumbs Up Resene Trojan

Resene Quarter Bianca

Resene Haystack

Resene Double Malta

Resene Unwind

Resene Streetwise

Resene Rock Spray

into the living room, installed sliding doors, closed off openings, shifted a hallway and added a walk-in wardrobe to Ann and Matt's bedroom, along with a small but perfectly formed ensuite bathroom. The wall in the upstairs hallway was moved and is now curved, elegantly embracing the ensuite inside the curve.

Ann and Katie (with a veto vote from Matt, who had to be convinced about the yellow) have created a colourful family home that's happy and playful, making inventive pairings within ➤



Resene Paris White

Resene Trojan

Resene Possessed

Resene Biscay

Resene Thumbs Up

Above: Yellow walls in Resene Thumbs Up with a textured white tile splashback turns a typical kitchen colour palette inside out paired with dramatic cabinetry in Resene Possessed.

Opposite centre: The property's Resene Double Malta exterior makes it stand out from a traditional neutral colour palette while remaining classic and elegant.

- | | |
|--|--|
| <input type="checkbox"/> Resene Quarter Bianca | <input type="checkbox"/> Resene Black White |
| <input type="checkbox"/> Resene Alabaster | <input type="checkbox"/> Resene Half Truffle |
| <input type="checkbox"/> Resene Merino | <input type="checkbox"/> Resene Triple Blanc |
| <input type="checkbox"/> Resene Truffle | <input type="checkbox"/> Resene Double Malta |
| <input type="checkbox"/> Resene Unwind | <input type="checkbox"/> Resene Streetwise |

kitchen, the walls are painted in Resene Trojan, a few shades lighter than Resene Possessed. It is a technique Katie replicated in other parts of the home. For example, she used Resene Unwind upstairs in the children's bathroom, complemented by Resene Paris White, a few steps – and a few shades – away in the adjoining hallway. "I like to use slightly different hues to talk back to each other throughout a home by using a colour in one room that links to another space in a way that might be less intense," she says.

Likewise, the downstairs toilet is Resene Biscay, a beautiful dark and stormy blue that links to Resene Blue Night and the complementary blue tiles in the couple's ensuite bathroom. Both are deep navy blues that make the antique gold fixtures shine.

Katie says she's never had a problem finding a colour to suit from the Resene range, and, as most of Ann's preferences were in the blue palette, her job was made even easier. "Resene has a particularly great range of blues."

One of Ann's beloved blues surrounds her in her favourite place to relax on her living room couch, curled up and cosy but uplifted by Resene Streetwise, a warm and gentle teal that tones down the kitchen's vibrant Resene Thumbs Up. She loves taking in those gorgeous colours or resting her eyes on Resene Paris White, a gentle marine green in the stairway. "I look at these colours around me, and I love them all. They reflect my personality, and they make me happy. They make this a warm and welcoming place to be." H

design Kate Peck, Kurio www.kurio.co.nz
words Lee-Anne Duncan
images Helen Bankers

Resene's vast colour palette. It caught the attention of the judges at the Resene Total Colour Awards, winning the Resene Total Colour Maestro – Residential Interior Award.

Ann is reluctant to pick a favourite colour – or room. As a mother of three (Sarah, 18, James, 15, and Olivia, 12), it's possibly impossible to single out a most beloved. But – if you were to press her – maybe the kitchen, with its mustardy sunflower yellow walls in Resene Thumbs Up, contrasted against the cabinetry in Resene Possessed. "I originally wanted yellow tiles as a splashback with white walls, but I couldn't find any to suit. So, we flipped it to have yellow walls and white tiles, which are much easier to find," says Ann.

In the dining room, which can be open to, or closed off from, the

→ *turn the page for alternative looks for this home's kitchen and dining area...*

paint it right

Choose the right Resene colours and paints for the job.

shine on!

To make your front door pop, use Resene Enamacryl gloss waterborne enamel or Resene Lustacryl semi-gloss waterborne enamel. These durable enamel-style paints are ideal for high-contact areas, such as doors, trims, windowsills, stair rails and balustrades and are easy to clean.

block work

To create colour-blocked walls with contrasting colours, use Resene SpaceCote Flat or Low Sheen and quality masking tape. Paint the wall in the lightest colour first and allow it to touch dry before applying masking tape on the desired edge. Use a brush to paint over the edge of the tape in the light colour. Then allow it to dry to prevent the paint from bleeding beneath the tape. Now paint the darker colour, using a brush when painting over the tape. Remove the tape when the paint is almost, but not completely, dry.



Katie Peck's tips to be bold with colour

- **Find multiple options** Start with one colour, then get a minimum of three Resene drawdowns (A4 paint swatches) in other similar colours to try. Katie often uses up to six. You can view these swatches free at your local Resene ColorShop in their instore colour library or order online at www.resene.com/drawdowns. Or use Resene testpots, available at your local Resene ColorShop or buy online at shop.resene.com/testpots.
- **Oranges need zest!** Love the colour orange? A fresh, natural zesty orange is often best. Try Resene Pizazz.
- **Hot on mustard?** Mustard yellows can have an enormous impact, but they can be tricky. Don't overuse them; contrast them with other more subdued colours – an excellent tip to tone down any bright colour. Try Resene Galliano with Resene Half Aubergine.
- **Go big in the whole room** Katie is into "being immersive", or colour drenching, which is painting the walls, ceiling, architraves and window surrounds in a single colour. The look does depend on the space, the home's era and, of course, the colour. Katie's favourite is Resene Green Meets Blue.
- **Favourite neutrals** It can't all be bold, so Katie's favourite complementary neutrals include Resene Black White, Resene Alabaster, Resene Rice Cake and Resene Merino, which has a warm undertone if a space needs a little warming up. With greys, she prefers Resene Truffle or Resene Half Truffle.

Top left: Ann's love of blues is well represented in the soothing tones of Resene Unwind in the family bathroom.

Top right: This musical space is kept fresh and neutral with walls in Resene Triple Blanc and a crisp Resene Quarter Bianca window frame.

Right: Subtly green Resene Paris White lends freshness and light to the stairwell.



walk this way

Protect native timber flooring with Resene Qristal ClearFloor 1K. This satin finish, waterborne urethane is extra durable to handle foot traffic and wear and tear from chairs and tables. To add colour and enhance the timber's natural beauty, add Resene Colorwood Enhance to Resene Qristal ClearFloor 1K.



alternative solution - easy, breezy living



Above: Fresh botanical Resene Aspiring walls anchor this space while subtle notes of pink in the Caesarstone benchtop from Stone By Design, the Zurah rug from Freedom and the Samsung Bespoke French Door Refrigerator in Glam Pink, give it a modern, on-trend finish. The Harper chandelier from Coco Republic adds a touch of glamour. The wood batten casing for the rangehood is finished in Resene Colorwood Breathe Easy for a stylish finish that works well with the crisp trims and ceiling in Resene Aoraki. The dining chairs and table are from Coco Republic. On the table the glassware and tableware are from Freedom, as are the two artworks on the walls and the three bar stools. The look is finished with beautiful plants such as the large ficus and Anthurium Andreanum in green planters from Kings.

top tip

It's easy to rejuvenate and enhance the colour of timber flooring, walls and ceilings with Resene Colorwood. Choose traditional wood colours, or opt for a beachwashed style with the Resene 'We Speak Beach' collection.

Resene Aoraki Resene Umber White

botanical freshness for easy living



Resene Colour Consultant **Amy Watkins** suggests this alternative scheme:

I've created a beachy summer space with a take on vintage rustic design. I wanted to create a soft, calm, welcoming look and feel by using chilled-out, relaxing Resene colours and changing the layout to a combined kitchen and dining setup. This features a continual wooden floor finished in Resene Colorwood Breathe Easy from the Resene Colorwood 'We Speak Beach' range. This makes the space feel larger and spacious. Repeating the same stain on the rangehood adds balance while preventing the kitchen corner from becoming too dark. The Samsung bespoke refrigerator is in Glam Pink, a fun point of difference that blends nicely with the pink-toned benchtop which adds texture. The eggshell white of Resene Umber White on the cabinets ensures the kitchen doesn't get too dark, and having Resene Aspiring on all the walls gives the room the connection to the outdoors. The dining chairs are wrapped in a natural rattan weave adding some rustic connections to the look.

email amy.watkins@resene.co.nz **web** www.resene.com/colourconsult

Resene Aspiring



Anthurium Andreanum
Kings
www.kings.co.nz

Hutton dining stool
Freedom
www.freedomfurniture.co.nz
0800 262 673

Resene Glorious

Studio tumbler
Freedom
www.freedomfurniture.co.nz
0800 262 673

Resene Colorwood Breathe Easy



Resene Half Pale Rose



Harper chandelier
Coco Republic
www.cocorepublic.co.nz



Resene Thunderstorm

Samsung Bespoke French Door Refrigerator in Glam Pink
Samsung
www.samsung.com/nz



illustration
Malcolm White



Above: This kitchen is the epitome of simple luxury with walls in Resene White Pointer and the island in Resene Half Washed Green, while a feature wall in Resene Wallpaper Collection 409543 adds subtle elegance. The wall-mounted cabinets are Resene Quarter White Pointer matching the ceiling and trim areas, while the floor is Resene Colorwood English Walnut. The Silestone splashback and island in Somnia from Cosentino adds luxurious drama, echoed in the matt black Haier French Door refrigerator and the sleek Miele KMDA 7633 induction cooktop with downdraft extractor. The Uno Etch brushed brass kitchen mixer from Robertsons and the vintage cloche pendant lights from Mr Ralph add notes of glam metallic. Dining table and chairs from Coco Republic, vase from ECC, bar stools from Corcovado, rug from Weave Home.

top tip

Use Resene Kitchen & Bathroom paint, made with anti-bacterial silver and MoulDefender, in wet areas for extra protection and a durable finish.



freshness, finished in luxury



Designers **Emma Adkins** and **Georgia Hay** suggest this alternative scheme:

With inspiration drawn from the detailed timber doors and architraves, we have created a traditional chic, open-plan kitchen and dining room, with a touch of glam. Resene White Pointer on the walls keeps the space light without feeling stark and Resene Quarter White Pointer is used on the shaker-style kitchen cabinetry, trims and ceiling to create a subtle contrast. Having a soft curve at the end of the island, accentuated with Resene Half Washed Green from the Karen Walker Paints collection, visually widens the space and creates an inviting kitchen. Resene Colorwood English Walnut grounds the timber floor and showcases the traditional timber doors. Finally, the feature Resene wallpaper, combined with accents of black and brass, adds personality and glamour.

email info@sampleworkshop.co.nz **web** www.sampleworkshop.co.nz

Resene 
Half Washed Green



Glass cloche vintage pendant

Mr Ralph
www.mrralph.co.nz
0800 677 2574

Resene Colorwood
English Walnut 



Oslo dining table
Coco Republic
www.cocorepublic.co.nz

Resene 
Gondwana




Resene Wallpaper Collection
409543

Resene ColorShops
www.resene.com/wallpaper

Resene 
Quarter White Pointer

Katari rug - moon
Weave Home
www.weavehome.co.nz
0800 922 000



Resene 
Element

St James dining chair
Coco Republic
www.cocorepublic.co.nz



illustration
Malcolm White



do more for less with Mitre 10

Getting a modern, stylish kitchen or bathroom doesn't need to blow your budget

Above: Mitre 10 can help you create your dream kitchen. A space that's stylish, functional and cost-effective.

Right: Updating handles and giving your cabinets a coat of paint can immediately make them look fresh and new.



Dreaming of a new kitchen, bathroom or living space but not sure you can afford the costs that come with it? We have all seen luxurious renovations on shows like *The Block* and all over Instagram, complete with granite or marble-look benchtops and gold taps. The good news is there are many ways to refresh spaces in your home without needing to do a full overhaul or break the bank. Even choosing one key thing in a room to update can have an instant impact and create a whole new feel. Mitre 10 is with you all the way, offering handy tips and tricks along with a fabulous range of products at low prices. You're guaranteed to find options that will spice up your living spaces without going over budget.

Kitchen refresh

The heart of the home, the kitchen is an important space to prioritise, both in practicality and style.

You can easily update your kitchen without knocking the whole thing down and starting from scratch. One of the easiest ways to give an old kitchen a facelift is to update your cabinetry. A fresh coat of paint is the fastest way to go. There may be a little prep and strip work involved but adding a pop of colour can bring a whole new personality to your kitchen.

Replacing the handles on your cupboards and drawers will also instantly upgrade the look. With so many shapes, sizes, and colours available, you can choose whichever style fits. As you're replacing the handles, you can also do the same to the tapware. Matte black or brushed brass are popular tap choices available at Mitre 10 that are practical while adding a touch of glamour for little cost.

If you'd like to go one step further, consider a



laminite benchtop. With a range of finishes and sizes, laminite benchtops tend to be more cost-effective than stone or marble-look. Using laminite means you can achieve the luxury look without the price tag. You could also make a statement with a bold splashback. There is a huge selection of colours available including "photo art" to take it up a notch.

For more of a design revamp, flatpack kitchens are available at a reasonable price and are simple to install yourself. Mitre 10 has a great kitchen planner tool and free design service to balance both design and practicality when choosing new cabinetry, while helping you spend your budget wisely. Book a free consultation at mitre10.co.nz/booking-tool.

Bathroom boost

Budget friendly bathroom renos do exist and are relatively easy to DIY. For a smaller space, floating shelves or wall hanging vanities provide storage without taking up too much valuable space. Another simple upgrade is to ditch the old shower curtain and replace it with a glass screen. This will instantly make the room look cleaner and sleeker as well as opening it up, so it seems larger. If the floor needs a refresh, vinyl flooring is fairly easy to install yourself with many different colours and material looks that are cheaper than tiling.

Painting over existing wall tiles is a simple way to modernise old-fashioned patterns and give them a new lease of life. The Mitre 10 Easy As guides include an Interior Paint Guide for everything you need to know about painting interiors and different surfaces.

The simplest way to jazz up an old bathroom is through lighting and mirrors. Choose bright LED lights for a modern uplift, stylish pendant lights for design

flair and you could even lay strip lighting around the bottom of a floating vanity for extra glamour (be sure to get wiring and electrical work done by a qualified professional). Mirrors create the illusion of a bigger room, as well as reflecting more natural light to make the whole space feel brighter. Try playing with shapes and styles of mirror to add personality and character, as well as functionality into the bathroom.

Go big

There are many ways to do a large makeover at a reasonable cost. Getting expert advice early in the inspiration and planning stage is key and can save a lot of money, from material selection to learning what you can do yourself and what you need to leave to qualified tradespeople.

Mitre 10 in-store kitchen and bathroom consultants can help design your room top to bottom and can suggest ways to save money that won't impact on style. Expert team members can offer smart, cost-saving tips and tricks that will work in any room you're planning to renovate, not just the kitchen or bathroom.

Create spaces you love while keeping your costs as low as possible with Mitre 10, the place to go for expert advice in all stages.

Find out more at mitre10.co.nz/inspiration or mitre10.co.nz/guides-and-advice.



Above: Replace shower curtains with glass screens for an instant upgrade and replace old flooring with vinyl. A modern look that's easy to maintain.

Top right: For a more extensive makeover, new cabinetry and benchtops can give you a sleek finish at a reasonable cost.

Above left: LED lighting and mirrors are a simple but effective way to refresh your bathroom.

Above centre: Floating shelves add valuable storage space without taking up a lot of room.



Above and top: The kitchen cabinets are brush painted with Resene Lustacryl semi-gloss tinted to Resene Half Ash to keep to the heritage theme. Resene Artemis, a muted slate blue-green, is used on the kitchen island. The hand-painted effect gives the cabinetry a heritage quality and ties in with the sandstone flooring. The kitchen walls are Resene Quarter Ecru White, and the ceiling and window trims are Resene Half Black White.



Resene Artemis
 Resene Half Black White
 Resene Quarter Ecru White

wide blue wonder

A meticulously renovated kitchen in Millers Point is a love letter to the city's maritime history.

One of the difficulties of a heritage renovation is this: when do wear and tear become part of the character of a home? There are more than 100 years of footprints and wear on the hand-cut sandstone in the kitchen of this Federation Queen Anne-style home in Millers Point, Sydney.

The four-storey, 158-square-metre home decorated in Resene paints was built in the 1890s. In the decades since, the house, with its timeless slate roof – from the Welsh Slate quarry in Penrhyn – sheltered shipyard workers and families before falling into a tired state. Striking a balance between functional modernity and heritage character was the biggest challenge for lead architect and interior designer Angelique Perak of Sydney's Studio Duo.

"The kitchen is the heart of the home; it's a nourishing space physically and mentally. I knew I had to protect the kitchen," she says.

The home's 18-month renovation marries tradition with a sleek, heritage-inspired Resene palette. As the building is protected, the renovation had to follow the complex requirements of the Burra Charter, which lays out basic principles and procedures to be followed in conserving important buildings, and the state's Heritage Council.

"This special pocket of Sydney is steeped in history, and we all took the custodian role seriously," says Angelique.

"We were fortunate that a previous owner had laid pine flooring on the lower ground floor, which could be removed. However, we found sandstone footings for another building underneath, requiring an archaeologist to supervise any work." The complex demands of the project fused the contractors into a close-knit team. "As we lifted one floorboard, we each carefully completed our task bit by bit. There was simply no time or space to work any other way."

Angelique knew just who to turn to when it came to colour. "I've always been a Resene girl – the range is so lovely. Resene offers truly pigmented colours. All the paint had to be approved by the heritage team, so we worked with a traditional palette. I had flakes of the original paint that we tried to match and elevate – I wanted a nod to history with a contemporary twist."

In the kitchen, as in the rest of the home, Resene Quarter Ecru White was chosen for the interior walls, allowing the velvet texture of the lath and plaster to take centre stage. Daylight softly falls across heritage detailing, black Japanese timber flooring and timeless sandstone. Resene Artemis – used as an anchoring colour – gives the kitchen's central island a sense of depth and history.

"The Resene Half Ash perimeter cabinetry gives a more contemporary backdrop to extend the space and reflect the natural light," says Angelique. She elevated the kitchen's finish with artisan techniques. "Volantes Decorating Service hand-painted the cabinetry in Resene Half Ash to achieve a more authentic result. Their team expertly finished the beautiful texture of the refined brushstrokes. This texture plays perfectly against the double-layer handmade brass grilles, custom-made in England as a respectful homage to the past."

The stunning classic kitchen has hidden secrets in the smallest of spaces. The 450- millimetre-wide dishwasher within the kitchen island has a specialised plumbing system, hydronic underfloor heating keeps feet warm on cool mornings and the staircase hides both a pantry and the controls for the home automation, including security, lighting and sound.

The 4m x 3.2m kitchen had its unique challenges. A restoration specialist recast and repaired components for the original oven in the hearth area to working order. However, a modern oven was custom-built to fit within the tight 800mm space in another spot in the kitchen. The proximity to the window and its traditionally thin heritage glass created an issue for a rangehood. Angelique solved the problem by incorporating a downdraft system to rise out of the benchtop, acting as both rangehood and splashback. The disguises didn't end there. "A family of six needs a large fridge, but it's not very 'on theme'. So the fridge is disguised as an armoire, with cupboards on either side – very *The Lion, the Witch and the Wardrobe*." The owners love their old kitchen with the new touches.

History lessons

Angelique advises renovators of heritage properties to engage professionals. "You need a team who understands the unique complexities of heritage properties. Find contractors with a collaborative approach; otherwise, there will be compromises down the track." When renovating a heritage home, be careful when removing hazardous lead-based paint. Follow Resene's safety guidelines if you find lead-based paint on your home at www.resene.com/leadbased. If you're unsure whether your home has lead-based paint, purchase a lead-based paint test kit at your local Resene ColorShop. **H**


design Studio Duo www.studioduo.com.au

words Cheree Morrison

images Brigid Arnott



 Resene
Half Canterbury Clay

 Resene
Chelsea
Cucumber

Above left and right: The courtyard area off the kitchen ties in the heritage polychromatic brickwork and restored flagstone pavers. The timber weatherboards, window trims and steps are painted in Resene Half Canterbury Clay, the soffits are Resene Chelsea Cucumber and the brick perimeter wall is Resene Half Black White. The door, railings and window trims are a custom heritage green – for a similar colour, try Resene Celtic.

Below: Resene Quarter Ecru White is the primary wall colour throughout the home, with details such as stair risings, trims and ceilings in Resene Half Black White. The stair risers and treads are protected with Resene Uracryl 402, a urethane acrylic suitable for projects requiring extra durability and water resistance. Resene Artemis and Resene Half Ash on the cabinetry and kitchen island provide a coastal aesthetic.



top tip

If you're painting cabinetry and furniture yourself, use Resene Lustacryl semi-gloss or Resene Enamacryl gloss for a hard-wearing, durable finish. Or ask your kitchen supplier to use Environmental Choice approved Resene AquaLAQ, a fast-drying lacquer system for cabinetry, so you get the authentic Resene colour and quality finish.

Resene Celtic 

Looking for Kitchen inspiration?



This **FREE** book is packed full of kitchen styles, trending materials and colours, and inspiration to help you plan your own dream kitchen.

It features a stunning collection of kitchens and cabinetry designed and created by **Mastercraft Kitchens** nationwide.



Scan here to order
your free 2023
kitchen look book







Right: This heritage kitchen, designed by Callidus Architects, features a pressed-tin splashback painted in Resene Merino with elegant cabinetry in Resene Powder Blue. The island is also painted in Resene Merino and the ceiling in Resene Alabaster.

-  Resene Powder Blue
-  Resene Merino
-  Resene Alabaster
-  Resene Copper Fire



In need of a pop of colour behind your kitchen hob? Get the look you want with paint.



-  Resene Eighth Akaroa
-  Resene Coriander
-  Resene Black White
-  Resene Half Bianca

A painted splashback is a budget-friendly, versatile way of injecting colour into your kitchen. Not only is a splashback practical, but it can also be a striking design feature. Whether you fancy a subtle metallic sheen or a pop of pastel, there's a Resene hue to suit any style.

Monochrome magic

There's no right and wrong when it comes to picking a colour. For a soothing, pared-back vibe, opt for a monochrome look, using a tone similar to the colour of your walls. For example, the fleecy mid-tones of Resene Eighth Akaroa and Resene Half Bianca will create a soft and cohesive look. For a budget-friendly DIY option, embrace your existing kitchen wall colour and paint the splashback area the same hue. Simply add a glass panel on top to finish the look. The key here is to use Resene SpaceCote Low Sheen Kitchen & Bathroom, paint formulated with anti-bacterial silver and MoulDefender to keep surfaces prone to bacterial and mould build-up protected and looking spick and span.

Colour pop

A painted splashback is a standout feature and can add a focal point to your space, and one in a complementary colour to your cabinets always impresses. Cabinetry in crisp Resene Black White looks fantastic paired with hues such as Resene Mamba (a smoky lilac) or Resene Coriander (a muted herbal green).

Back-paint it

Try back-painted glass if painting a splashback feature directly onto your wall doesn't appeal. Back-painted glass, professionally finished with Resene Imperite from the Resene Engineered Coatings Systems range, is a great option for kitchen splashbacks. The glass finish can easily be wiped clean, and the hue on the back will be well protected – no cracks or valleys for kitchen grease to get stuck in. Make sure your splashback supplier applies the Resene Imperite onto low iron glass, as this will show the true colour you've chosen. **H**

design Callidus Architects www.callidusarchitects.co.nz
Kitchens By Design www.kitchensbydesign.co.nz

words Nicole Barratt

Left: A Resene FX Metallic Copper Fire splashback protected with glass is the hero of this warm-toned room designed by Kitchens By Design. The walls, cabinetry and island are in Resene Bianca, an off-white that works well with warm, toasty colours.



little and lovely

Once a tiny builder with big dreams, Rebecca McLean now designs award-winning tiny houses painted in elegant Resene colours.

Rebecca's passion for design and construction is in her blood – the builder's daughter remembers helping select carpet and paint colours for a new home aged 10. Fast forward more than a few years, and Rebecca works alongside her father to build tiny custom homes for easy-living enthusiasts throughout New Zealand.

The idea for Tiny House Builders came from a desire to generate a little extra income from a rental during her maternity leave. A tiny-house Trade Me listing caught Rebecca's attention but, rather than buying it, she convinced her dad to build one. "We took it to the Tauranga Home Show and sold one... and then another. Now we employ 13 staff. It's a true family affair – my husband, sister, friends and parents are all involved." Tiny House Builders won big at the latest NZ Tiny House Awards, taking home Best Commercial Builder, the Resene Colour Choice Award and New Zealand Tiny House of the Year.

While there are standard house plans, each is customised and coloured to the customer's needs. "The spec sheet is incredibly in depth. Do you fold or hang your washing? How many burners do you use? (Trust me, they all say four, but you never use all four simultaneously.) This is a home built specifically for you." When it comes to tiny houses, no one size fits all, and it's the same with the tiny home customer. While tiny homes are rooted in sustainable

Resene
Nocturnal

Resene
Element

Resene Wallpaper
Collection 47404

Resene
Half White Pointer



Above: Rebecca McLean launched Tiny House Builders in 2017, and the company has since built more than 50 tiny homes. The exterior of this tiny home in Waihi Beach is painted in Resene Lumbersider tinted to Resene Black CoolColour. The interior is Resene Half White Pointer.

Top: Tiny House Builders' Pohutukawa Double Bridge design won the New Zealand Tiny House of the Year Award at the Tiny House Expo. This home features Resene Half Nocturnal as a statement colour, walls in Resene Half White Pointer and birch ply ceilings finished in Resene Colourwood Whitewash.

Resene
Duck Egg Blue



Rebecca's big tips for tiny living

Get to know your local council's regulations and restrictions. Tiny House Builders' houses are on trailers, so they don't need building consent, but things change if you plan on putting them on foundations. You also need to know about connections to services like power and water, and site limitations. Seek advice and do your homework.

- Become a master of putting things away.
- Lose the heirlooms and nana's china cabinet. Consider external storage for special items – and your off-season wardrobe.
- Follow the 'one in, one out' rule with your wardrobe.
- Imagine you're travelling – you can't fit a large Turkish rug in your suitcase and, unfortunately, you can't fit one in your tiny home.
- Compromise don't sacrifice. And yes, there is room for a dishwasher drawer.



living and still offer owners economic and green-living benefits, the appeal of small living has evolved.

"Our customers are of all ages and demographics and from all over the country. One thing they have in common is that they tend to be going through change, whether that means moving out of home, downsizing, divorce or fulfilling a holiday-home dream," says Rebecca.

Colour selection is one of the most fun and creative parts of the design process. Clients have creative control over the exterior and interior colour, with Resene being the paint of choice. "We recommend using the Resene CoolColour technology on exteriors, especially when using a dark tone, such as Resene Element. Our customers want quality, long-lasting colour and Resene offers that. Resene Stonehenge is another popular and traditional exterior choice, but we have clients who have been creative with Resene Duck Egg Blue."

When it comes to the tiny interior, whites continue to be popular, but customers are becoming more daring. "Perhaps 90% of our clients select Resene Half White Pointer; they walk in, and it's fresh, bright and clean – instantly appealing. Our younger clients tend to experiment with dark bold colours."

One such client was Katikati local Kacey, whose Pohutukawa Double Bridge tiny home with feature walls in Resene Nocturnal won the Resene Colour Choice Award.

While bold, dark colours allowed for Kacey's personality to shine, neutral white can also be a perfect backdrop for pops of colour using wallpaper, accent tiles and sofa fabrics. "I've had clients with a cosy nook decorated in Resene Swamp and Resene Wallpaper Collection 47404. Using Resene Half White Pointer alongside creates balance."

One of the biggest appeals of using Resene paints on interior walls is that it makes the space feel homey and luxurious. "Although they're on a trailer, these are homes, not caravans. Prefinished walls don't have the same feeling – plastic or textured materials can feel like a caravan or container, so using Resene paints makes it feel like a real house." **H**

For more on Tiny House Builders' designs, visit www.tinyhousebuilders.co.nz.

words Cheree Morrison
images Boundless Vision



top tip

Resene Lumbersider is a durable waterborne paint, ideal for exterior paint jobs. When painting your exterior in a dark colour, opt for a Resene CoolColour formula. The special heat-reflective technology helps keep the paint and surface cooler, adding further protection from the elements.

Above: Smart use of doors and windows, extends the space of this design, painted in Resene Duck Egg Blue with trim in Resene White, by connecting with the outdoors.

Top: Interior walls painted in fresh Resene White Pointer paired with the ceiling painted in Resene White, like this airy bedroom, is a popular choice with Rebecca's clients.





Wonder in Whitford

Wanting to escape the hustle and bustle of suburbia, Glenn and Mel decided to seek peace and privacy southeast of Auckland in the rural town of Whitford. Having always wanted to live in the country they were happy to find a lovely 3,000m² section in 2020. Perfect to build the single level home and pool they'd dreamed of with plenty of space to enjoy, yet still manageable for upkeep.

The 8 month build resulted in a beautiful modern country home showcasing clean lines coupled with natural materials and textures. The 305m² house consists of 4 bedrooms, 3 bathrooms, 2 lounges and a double car garage with a loft which is used as a 5th bedroom – and you can't forget the stunning salt water, heated pool.

Concrete floors and natural accents of schist and timbers give the interior a neutral earthy feel. The walls are painted in Resene Double White Pointer and the ceiling in Resene Alabaster.

The exterior features schist columns framing the entrance way below a gabled roof to add to the country charm. The rest of the home has country style vertical weatherboards finished in deep Resene English Walnut natural wood stain. To contrast the weatherboards and ebony roof, the fascia and eaves are painted in Resene Lumbersider Low Sheen in Resene Alabaster. Tying it all together is Marley Stratus Design Series® Stormcloud® spouting and RP80® downpipes in black.

Glenn and Mel chose Marley Stratus Design Series® because it's stylish and hard wearing. *"uPVC is perfect for our harsh New Zealand weather and it's great knowing that Stratus is backed by a 15-year guarantee even though we know it will last much longer than that!"* Stormcloud's angular profile complements the design perfectly matching the roof.

"It was actually a hard choice because the Stratus colour range gave us plenty of great options to choose from."

As they are on tank water Glenn and Mel wanted to make sure leaves and debris were kept out of their drinking water. So they also installed low maintenance Marley Curve® leaf diverters on their RP80® downpipes in matching black.

Although wishing they built the home a bit bigger, Glenn and Mel are in love with their beautiful new build *"Perfect for the kiwi summers!"*.





A match made in heaven

Marley Stratus Design Series® spouting and downpipes look amazing with the Resene Waterborne Woodsman range so we've paired them up to give you some inspiration for your next project!

Created in New Zealand's favourite roofing and exterior design colours, the Marley Stratus range is available in Black, Ironsand®, Grey Friars®, FlaxBlack® (new), and metallics Titanium and Copper. With two profiles to choose from, Stormcloud® or Typhoon®, there is an option to suit all styles of home.

Resene Waterborne Woodsman is an exterior wood stain designed to colour timber, while still allowing the natural grain of the timber to show through. It's the perfect way to add colour to new or previously stained timber without losing its natural beauty.

STRATUS®
DESIGN SERIES

Resene
the paint the professionals use

plant-based paints

Resene
Tom Tom

Resene
Rainee


Resene
Kandinsky

Resene
Double Rice Cake


Resene
Eighth Rice Cake

fresh thinking

Above: Sleep easy by decorating your bedroom with Resene Room Velvet from Resene's range of plant-based hybrid waterborne alkyd paints. Wall painted in Resene Eighth Rice Cake with leaves and insects in Resene Edward, Resene Rainee, Resene Kandinsky, Resene Cashmere, Resene Zorba, Resene Tom Tom and Resene Willow Brook. Side table in Resene Cashmere and vase in Resene Double Rice Cake. Resene Living duvet from Briscoes, pillowcases, throw and cushion from Adairs.

 Resene
Cashmere

 Resene
Zorba

Resene
Willow Brook 

paints in the 1950s, removing lead from paint proactively, joining the Environmental Choice programme in 1996 and continuing to offer the widest range of Environmental Choice NZ approved paints today. Renewable plant-based paints are the next breakthrough in eco paints.

Resene has had many paints free of animal products, such as beeswax or tallow, for years, including crowd favourites Resene Lumbersider, Resene SpaceCote Flat, Resene Enamacryl and Resene Lustacryl to name a few. But the new plant-based range, using hybrid waterborne alkyds, is the latest advancement.

The focus on hybrid waterborne alkyd formulas aims to reduce fossil hydrocarbons (a chemical name for oil) in paint. For a number of years, Resene technicians have been researching and developing renewable paints that reduce the need for carbon sourced from fossil hydrocarbons, which can contribute to atmospheric carbon dioxide and the greenhouse effect. Instead, hybrid waterborne alkyds obtain carbon from organic sources, which can be recycled into the atmosphere and plant growth without increasing atmospheric carbon dioxide.

The latest hybrid waterborne alkyds

Hybrid waterborne alkyds are paints made with plant oils (alkyd polymers), such as linseed and castor oil, combined with other polymers, to give 60-95% per cent renewable content. Resene's new range of plant-based hybrid waterborne alkyds includes Environmental Choice approved Resene Room Velvet low sheen for interior walls, Resene Waterborne Lusta-Glo semi-gloss for trims and Resene Woodsman Decking Oil Stain for decking, with two more ranges to be launched this year.

The purpose of paint is to protect surfaces, and in doing so extend the longevity of homes and other projects. Doing this well is the best environmental impact products can have. Always choose a product that is designed for your project to get the best performance out of the product and least maintenance. It's better to paint once with a quality product, than repaint many times with a low quality one. **H**


To find out more about this fascinating topic, visit www.resene.com/plantbased.

project Shani Luckman
image Bryce Carleton

It's even easier being green with Resene's growing range of plant-based paints.

The world of eco, plant-based paints is fast-growing, but it can be tricky to navigate the jargon. Low-VOC, no added VOC, hybrid waterborne alkyds, plant-based, bio-based, renewable, organic and natural paints are just a few of the technical terms thrown around to describe eco paints. Plant-based paints are an exciting growth area, but it's easy to get confused about the new eco technologies available and hard to know what to believe. Resene thinks choosing environmentally preferable paints, primers, sealers and wood stains should be simple. That's why Resene has Environmental Choice approval for the waterborne paints homeowners most commonly use so you can be confident they have been checked by New Zealand's official ecolabel who independently verifies each Resene product that has approval.

Resene has been committed to producing environmentally preferable paint products since just after we started, launching the first waterborne

Resene
Edward 

top tip

Resene Room Velvet low sheen hybrid waterborne alkyd dries to a beautiful, even, silky low sheen finish. Based on a tough plant-based, flexible hybrid waterborne alkyd resin, this low odour formulation is easy to apply and highly durable.

jazz it up

A bathroom can reflect your love of interiors just as much as a bedroom or lounge. Wallpaper, with its beauty and versatility, could become your new go-to.

Wallpaper packs a punch in every room, whether you use it to liven up living rooms or set the scene in a dining space. Bathrooms and powder rooms are no exception. Wallpaper might not be the first thing that springs to mind when decorating wet areas – think humidity, splashes and mould – but plenty of options in the Resene Wallpaper Collection work well in damp conditions.

Squeaky clean

Wet rooms need all the help they can get to withstand moisture, so strong vinyl wallpapers, which can be cleaned if soap, shampoo or any moisture sticks to their surface, are your best friends. Keep an eye out for your wallpaper's washability rating – look for the squiggly wave symbols on the design's label – when considering options for damp areas. Depending on the material, your design may be spongeable, washable, extra-washable or scrubbable. Opt for extra-washable and scrubbable varieties, and you can't go wrong.

Add personality

Bathrooms and powder rooms, usually much smaller than living areas and bedrooms, are among the less-daunting rooms to decorate, which makes them ideal for experimenting. If you have a bathroom without natural light, invite light in with a pop of brightly patterned wallpaper. Large-scale prints will open and expand your space. Go bold and try florals – create a lush garden with botanical wallpaper. Perhaps create a holiday vibe with designs such as Resene Wallpaper Collection 220100? Palms and parrots will surely bring a slice of paradise to your bathroom.

Talking point

Wallpaper is a fantastic conversation starter. Vibrant wallpaper patterns add an element of surprise to a home and will pop against a neutral hallway. Complement any cabinetry by drawing on a hue inspired by the wallpaper. For example, try pairing a deep wall colour such as Resene Coast with a blue-toned wallpaper – designing with a monochrome palette adds understated glamour. **H**

words Nicole Barratt



Top: Consider wallpapers inspired by natural materials such as wood and stones for an elegant look. Resene Wallpaper Collection 37991-3 gives the look of marble for a fraction of the cost. Pair with flooring in Resene Colorwood Mid Greywash and trims in Resene Sea Fog.

Above left: Resene Wallpaper Collection 687828 breathes new blue-hued life into this home's powder room. Pairing busier wallpapers with a large mirror ensures the space stays light filled and airy. Team with Resene Alabaster on trims and Resene Colorwood Natural on flooring for a chic contrast.

Above right: There's no reason a bathroom shouldn't be as character-packed as other rooms. Resene Wallpaper Collection ONB102696234 makes guests smile with its diving and flipping retro bathing ladies. Resene Rice Cake on cabinetry teams swimmingly.

top tip

After installation, plenty of ventilation and wiping off excess moisture are your best bets for keeping your wallpaper looking fresh. Pair wallpaper with trims painted in Resene Lustacryl Kitchen & Bathroom and the ceiling painted in Resene SpaceCote Flat Kitchen & Bathroom for extra protection.



it's showtime!

Whether you prefer action films or rom-coms, sci-fi or period dramas, create picture-perfect style with Resene.



top tip

If you want to use your wall as a screen, you can paint it with Resene SpaceCote Flat in Resene Silver Sand. Make sure the wall finish is smooth for the best picture quality.



- | | |
|---|---|
| <input type="checkbox"/> Resene Island Time | <input type="checkbox"/> Resene Epic |
| <input type="checkbox"/> Resene Lakeside | <input type="checkbox"/> Resene Elephant |
| <input type="checkbox"/> Resene Plan B | <input type="checkbox"/> Resene Colorwood Shade |

Above: Resene Blackest Black, painted on these walls, absorbs more light than any other Resene colour, making it ideal for media rooms. Floor painted in Resene Stepping Stone, cabinet in Resene Nero and vase in Resene Element. Sofa and side table from Matisse, rug from Baya, Frame television from Samsung.

Left: Channel a little cinematic drama by creating a media room with walls in sumptuous Resene Welcome and flooring in Resene Colorwood Shade. Side table (left) in Resene Lakeside with legs in Resene Epic, side table (right) in Resene Island Time with legs in Resene Plan B and vase in Resene Island Time. Sofas from Interior Warehouse, rug from Early Settler, Frame television and easel from Samsung.

With movies now at your fingertips thanks to a wide choice of streaming channels, you don't have to leave the comfort of home to catch the latest release. To take your movie experience to the next level, dial up the cinematic style by creating ambience and colour with a few handy decorating tricks.

Keep it dark

Dark colours are the go-to for media rooms; they create a cosy, cocooning vibe, ideal for snuggling up with a bowl of popcorn. "Darker, moody colours can elevate the space and make it feel quite opulent," says Resene Colour Consultant Jackie Nicholls. "You'll find that furnishings pop against dark backgrounds, and it will not close the space in – it just makes it feel more special." To minimise colour reflections from the screen completely, opt for one of Resene's range of blacks, including the latest release Resene Blackest Black, which is even more intense than Resene Black.

"If black isn't to your taste, some interesting colours to try are Resene Half Fuscous Grey, a sultry brown-grey with plum undertones, Resene Elephant, a dramatic blend of blue and green or Resene Cabbage Pont, a soft relaxing grey-green," says Jackie.

For vintage theatrics, draw inspiration from historic buildings such as the Hastings Opera House and choose colours such as Resene Merlot or Resene Vanquish. Fancy a sparkling ceiling like the Auckland Civic Theatre? Consider painting stars in Resene FX Nightlight glow-in-the-dark paint. "A media room is a space where you could also consider a darker ceiling or even an anaglypta wallpaper such as one from the Resene Anaglypta Wallpaper Collection on the ceiling painted in Resene FX Metallic paint to give the impression of tin ceiling tiles," adds Jackie.

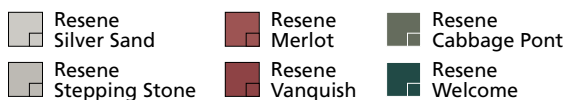
All about the mood

Lighting – or lack of it – is one of the essential aspects of a cinema. When the lights dim, it's the universal cue the show is about to start. If you want the full theatre experience, ceiling downlights tilted to the side of the room create a dramatic atmosphere. A dimmer switch is an easy and more affordable way to get the vibe if you're working with a pre-existing space. Ensure the light will not bounce off the screen or into your eyes, and invest in blackout blinds or drapes to cover windows and block out natural light.

If you want to relax to the max, consider Resene SmartTouch conductive coating. Picture this: you're comfy and snuggled up on the couch, popcorn in hand, opening credits rolling, only to realise the lights are still on... don't panic! All it takes is a simple tap of the wall and, voilà, complete darkness. This conductive coating, applied under your chosen Resene topcoat, can be connected to an electrical circuit by a professional electrician.

Comfort factor

Seating is another integral part of a media room. Modular sofas are ideal for their flexible design, allowing you to play around with the seating arrangements. Wrap the seating around the room or create a row of plush seats as seen in a cinema. Extra details such as thick carpet and soft furnishings will also help to absorb sound, making the space more practical; lush fabrics such as velvet add a sense of vintage luxury. To tie the room together, consider installing custom cabinetry painted in the same Resene colour as the wall. All you need to do now is agree on a movie to watch! [H](#)



Resene Blackest Black

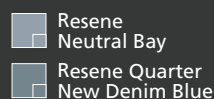
Technically speaking, black is a colour perceived by the cones of the eye in the absence of light or very low luminance. Jet black is a shade of black named after the mineraloid jet and has a blue undertone, which the eye perceives as richer and deeper than other undertones. Dark black is often described as having a high 'jetness'. Resene Blackest Black is Resene's 'jettest' or darkest paint available.

To achieve this rich deep colour, Resene Group Technical Manager Mike Clowes and his team worked to bring the particle size of the black pigment down to achieve optimal 'jetness' in Resene Blackest Black. Resene Blackest Black is available in Resene SpaceCote Low Sheen ideal for interior areas. But to achieve different levels of sheen, it can be topcoated with Resene Concrete Clear.

Above: Resene Blackest Black is the darkest black Resene has. Background and small board in Resene SpaceCote Low Sheen tinted to Resene Blackest Black. Cups, bowls and small pot all in Resene SpaceCote Low Sheen tinted to Resene Blackest Black then topcoated with Resene Concrete Clear gloss.



Below: If black isn't an option for your media room, try a deep, blue-toned grey such as Resene Tuna, creating extra visual depth by adding battens painted in Resene Quarter Tuna. Add glow-in-the-dark stars to your ceiling or lampshade with Resene FX Nightlight for a theatrical touch. Flooring in Resene Quarter Tuna, television cabinet and popcorn bowl in Resene Quarter New Denim Blue, side table in Resene Neutral Bay and lampshade in Resene Quarter New Denim Blue with stars in Resene FX Nightlight glow-in-the-dark paint. Sofa and ottoman from Nood, throw from H&M Home, cushions from Freedom, Bed Bath & Beyond and H&M Home, Frame television from Samsung.



Resene Quarter Tuna



style purr-fection

Beautiful homes and happy pets are a walk in the park with clever colour and paint choices.



Above: Embracing the best of tabby tones with background painted in Resene Double Tea. A4 drawdown paint swatches, from right, in Resene Mako, Resene Casper, Resene Napa, Resene Double Napa and Resene Tea. Vase and squiggle dish in Resene Casper, smaller vase in Resene Napa and cat ornament in Resene Tea. Cushion cover from Farmers.

Top: The walls painted in Resene Tea and arches in Resene Napa match Lavender's tabby hues while minimising paw prints. Floor in Resene Double Tea, floating linear shelves in Resene Casper, coffee table in Resene Double Napa, bench seat and round vase in Resene Casper, Nood cat ornament in Resene Tea and small vase in Resene Napa. Sofa from Nood, rug, coffee cup and cream and white cushions from Freedom, blue cushion from Farmers.

Resene Casper
 Resene Napa
 Resene Half Stack
 Resene Armadillo

Creating a home that's a castle for you and your four-legged friends doesn't mean compromising on comfort, practicality or design aesthetic. Here are a few ideas to help ensure you don't end up barking up the wrong tree before picking up a paintbrush.

Scale, function and design

Interior designer Vanessa Nouwens says it's best to consider how you live and how your pets behave when creating a pet-friendly home. "When designing a room, I ask how much or how little of the space the homeowners want their pet to have access to. This helps me understand how and where to integrate a pet's requirements into the overall design."

If your dog likes to play in the mud or your kitty is a climber, instead of agonising over muddy paw prints or broken vases, why not factor your pet's athleticism into your room design? Shelves create visual interest while allowing cats to stretch their legs and survey their kingdom from new heights. Installing them is an excellent idea for those living in apartments or homes where cats don't have access to outside areas where they can jump and explore. Make the shelves a design feature by painting them or by placing them in an arch design.

Bark-itecture

Dogs love having a basket and blanket to lie on – it helps them feel safe and secure. But there's no reason the basket should look like a dog's breakfast. Paint your dog's bed in a complementary colour to help incorporate it into your home, and if your design allows, you could even create a special dog bed alcove. If your fur buddy is going to jump on your sofa, like it or not, choose a colour such as grey, which will help disguise pet hairs. A textured material will be forgiving of scratches.

Foodies for good girls and good boys

Does this scenario sound familiar? You're cooking dinner, and a

Resene Silver Chalice painted on these walls is the perfect Schnauzer colour. Dog bed in Resene Armadillo, Resene Spanish Green and Resene Half Stack. 'MAX' name painted in Resene Rivergum, hydration station and console in Resene Rivergum, floor in Resene Colorwood Shade, coffee table in Resene Half Stack, pendant in Resene Spanish Green and vases in Resene Armadillo, Resene Spanish Green, Resene Rivergum and Resene Half Stack. Sofa and rug from Nood, throw, grey cushion and dog cushion from The Warehouse, other cushions from Mocka.

-  Resene Mako
-  Resene Spanish Green
-  Resene Rivergum
-  Resene Colorwood Shade



four-legged friend swoops in behind your feet to pick up any scraps. While you'll never stop a pet's food-loving instincts, a way to minimise underfoot cooking mishaps is to move the food bowl out of the kitchen and into another part of your home. Food bowls can be tucked away on a timber shelf under a hallway console and painted or stained in a matching colour. For easy cleaning, paint the shelf in Resene Enamacryl gloss waterborne paint or stain in Resene Colorwood protected with Resene Aquaclear clear urethane.

Practical materials and finishes

Pets can be tough on furnishings and surfaces – paws and claws can take their toll. Keeping things squeaky clean is easier with tightly woven, wipeable, hardwearing and stain-resistant textiles.

"If you have an area in your home for pets, it is a good idea to use harder-wearing waterborne enamel products such as Resene SpaceCote Low Sheen for walls. It's durable and easy to clean," says Resene Colour Consultant Jackie Nicholls. "You could also use Resene Lustacryl, which has a semi-gloss finish and is even tougher on the lower half of the wall.

"Some pets have a habit of scratching a front door when they want to come inside, so our best recommendation would be Resene Enamacryl gloss, or Resene Super Gloss our toughest solventborne door paint," says Jackie. Cats with a love of scratching will be forgiven (almost) if you sand back any scratched areas and rejuvenate them with fresh paint. Inevitably there will be rainy days and some little 'accidents', especially in the puppy or kitten stages. A painted or stained floor in a shade that nods to your pet's colouring will be hardwearing and easy to clean while camouflaging any shedding between vacuuming. Paint flooring in Resene Walk-on flooring paint – its tough surface can take knocks, scrapes and frequent cleaning. For extra protection, finish it with Resene Concrete Wax. Hardwood, cork or ply flooring can be stained in Resene Colorwood and protected with Resene Qristal

ClearFloor for extra durability. It's a good idea to give your pets a little holiday while you set about making their new home purrfect for them. Little paw prints may be cute, but not on your new floor finish.

Coat of many colours

Just as we often look to nature for colour inspiration, there are tangible benefits when colour sourcing from our little four-legged friends. Paying homage to your best friend's hues is easy with the Resene ColourMatch tool at www.resene.com/colourmatchonline. Simply take a picture of your pal on a smartphone and upload it to find your pet's perfect match. You can also use the Resene colour palette generator www.resene.com/palettegenerator to create a Corgie-worthy colour scheme or a perfect Persian palette.

Pets have a heightened sense of smell, and if your cat is particularly sensitive, consider using Resene Zylone Sheen Zero, a paint from the Sensitive Choice approved range with very low odour and no added VOCs. Or for a more durable finish, especially for active pets that may be damp when they come in from exercise or playtime, look to Resene SpaceCote Low Sheen Kitchen & Bathroom and Resene Lustacryl Kitchen & Bathroom with the added benefit of anti-bacterial silver and MoulDefender additive.

Having a furry friend in your home doesn't mean your home design has to go to the dogs too, with a bit of planning and a few paint tricks you can create a home that's the cat's meow.

To learn how to create the dog bed, kitty-litter house and feeding station, visit www.habitatbyresene.com/petprojects.




projects Vanessa Nouwens, Fleur Thorpe
words Moneuan Ryan
images Bryce Carleton

Thanks to our paw-some pets – Lavender the cat, Mitzy the Schnauzer and Frida the Griffon.

A lush, multi-level garden with a wooden pergola, a stone lantern, and a pond with lily pads. The garden is filled with various plants, including tall grasses, purple-leafed shrubs, and green foliage. The stone lantern is a traditional Japanese-style lantern with a tiered roof and a small finial. The pond is a small, rectangular feature with lily pads and water. The pergola is made of dark wood and has a flat roof. The overall scene is a peaceful and well-maintained urban garden.

urban. oasis

A landscape designer has created a calming zen garden where Resene colours and plants work harmoniously.

- Resene Woodsman Uluru 
- Resene Woodsman Heartwood 
- Resene WB Woodsman Woody Bay 

Urban designer Bayley LuuTomes speaks more than one language, but his first language is nature. “My ethos is all about mimicking Mother Nature as closely as possible,” says Bayley, who has run his eponymous garden design business since 2012. “That means not planting a formal English Buxus garden in a coastal location where it won’t do well or planting daylilies in poor-draining clay soils. I know it sounds a bit odd, but plants tell me where they want to go.”

It’s an ethos the award-winning designer has adopted in the Paraparamu garden he shares with his family. This is the eighth house Bayley has owned and renovated. “I get bored easily, and once I’ve done up a house and garden, I need to move on to the next challenge.”

This house, built in 2006, was a blank canvas when the qualified horticulturist bought it a year ago. Once he’d had the exterior painted in Resene Jaguar and stained the garage door in Resene Woodsman Heartwood, he turned his attention to the garden, which consisted of an *Albizia julibrissin* ‘Rosea’ (Persian silk tree) in the backyard, a *Gleditsia triacanthos* in the front and a patch of scrappy lawn.

“I designed the garden in three zones to show that different styles of gardens can happily co-exist in one location,” he says. That includes the front garden, where a floating boardwalk, finished with Resene Woodsman Heartwood stain, provides access from the street to the front door. “A floating system allowed me to utilise the contours of the land.”

The second zone is on the north-eastern side of the house, where Bayley has turned an unloved space into a Japanese-inspired garden, complete with a 4m x 2.5m pond (“water plays an important part in any garden, adding harmony and balance”), Japanese Maples and Oriental lanterns that are illuminated at night.

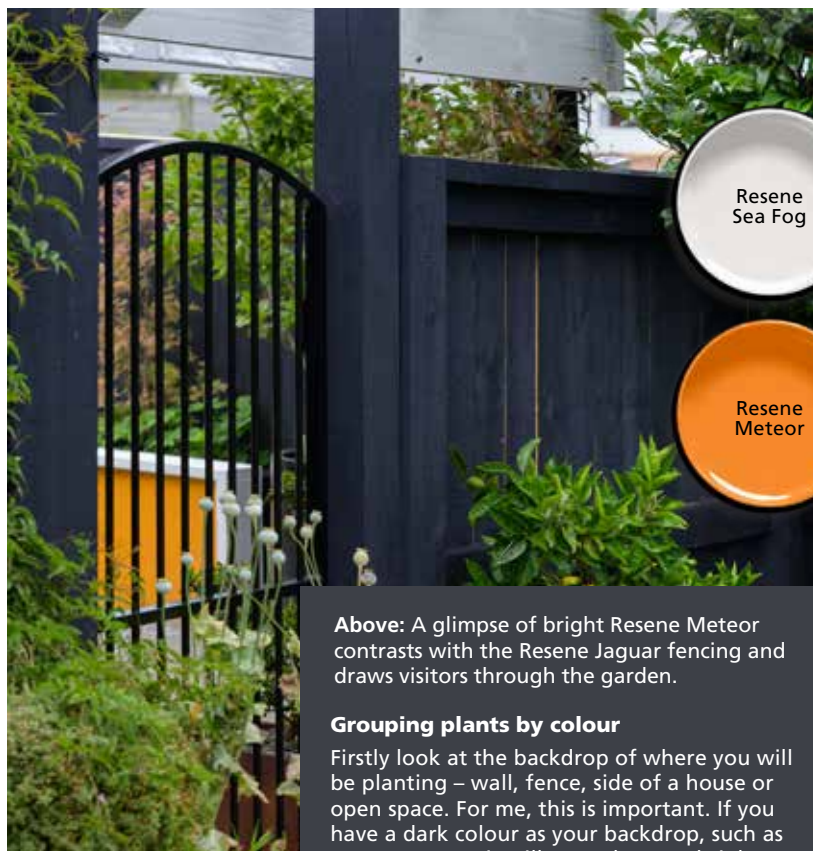
He added river rocks to soften the rectangular pond, along with *Ophiopogon japonicus* (mondo grass) and *Anemone hupehensis* (Japanese anemone). “It’s my vision of an inner suburban oasis, a great place to enjoy the sun.”

The final zone is the backyard. Bayley recently completed a courtyard off the living room with a covered area and raised block-wall garden beds primed with Resene Quick Dry waterborne primer and finished with Resene Sea Fog and Resene Meteor.

“The beds must be 550 millimetres off the ground, so the dogs don’t jump on the plants or dig them up.”

Having designed about 80 gardens across New Zealand and Australia, Bayley has picked up many tips and tricks, particularly in smaller sections. “The key is to look at your location – where is the sun, what is the soil, what types of plants can grow successfully here? It all comes back to my golden rule of using plants that mimic Mother Nature because those plants will grow naturally in that location.” ➤

Opposite: The Resene Woodsman Uluru deck and Resene Waterborne Woodsman Woody Bay pergola create an island between the water dotted with water lilies and the densely planted Japanese Maple, Miscanthus grass, *Camellia Japonica* and *Cotinus Coggynia*.




Above: A glimpse of bright Resene Meteor contrasts with the Resene Jaguar fencing and draws visitors through the garden.

Grouping plants by colour

Firstly look at the backdrop of where you will be planting – wall, fence, side of a house or open space. For me, this is important. If you have a dark colour as your backdrop, such as Resene Jaguar, it will pop whatever bright colour plants/flowers you plant. Dark colours are a great backdrop for lush shades of green and silver foliage.

There is no right or wrong way to group plants by colour. It comes down to personal choice. I have seen some odd colour combinations in my time and thought, ‘No way will they work,’ but in actuality, they do. However, I like to group colours based on the garden’s style. For example, in a woodland garden, I would go with soft pastels and cool colours such as peach, pink, white, lavender, blue and indigo. Woodland gardens are mostly in shade to dappled light, so softer colours bring out the mood and feel of that garden style much better.

For a cottage-style garden, I would go with bright colours such as yellow, red, orange, purple, blue – most colours, really. Cottage gardens are bright, open and full of plants with multiple layers from groundcover to tall towering flowers. You can get away with bright colours as the plants compete for visual space.

Below from left: Calliandra, poppy seed pods and achillea. 

Resene
Wanaka 

Bayley's top tips:

How to choose fence, deck and house exterior colours to go with your garden:

"For me, it's like painting. You start with a base and work forward. Choose complementary colours – for example, Resene Wanaka on the wall with *Kniphofia* (red hot poker) planted in front. The flaming red-orange colour will light up in front of the blue Resene Wanaka wall.

"Neutral base colours work well with bright colours with a strong weighting. What I mean is red is visually more vibrant than purple. You would use a small amount of red in a garden and then more purple.

"For example, I would use Resene Atomic on the wall. Then plant white hydrangeas, purple lavender or pink canna lilies. A white base works with all coloured plants, and so does a black base colour.

"I would treat wood stains the same way as paint. The great thing about a wood stain is it allows the wood grain to show through. Because of this, my plant selection would be simple and in mass to show off the stain. For example, Resene Skywater on a board and batten wall with *Carex testacea* (an ornamental grass) at the base."

Right: The golden Resene Woodsman Heartwood boardwalk plays beautifully against the Resene Jaguar house, leading visitors through the garden to the front door.









How to enhance gardens with structural elements:

"Gardens are all about balance – you need to have positive and negative space and layers from the foreground to the background. There should be a mix of tall and low elements, soft and hard surfaces, curves and straight lines and dark and light colours. These elements or forms can be made of natural or manufactured products. It's how you combine them that will enhance your garden.

"For example, you can bend a hard form like steel into a curve to soften its appeal. The curve will create negative space to balance out the heavy (positive) part of the steel. Soft flowing grasses also contrast the stiff nature of steel. It's about finding the right mix of all the elements."

Are there any structural elements that are particular to Japanese-style gardens?



Japanese gardens are about creating a space where you feel relaxed, calm and recharged – a place where you can collect your thoughts. These spaces usually have a seating/sheltered structure, such as a tea house or pagoda. Water is important in creating a restful environment. The sound of running water is calming. It also helps block out the outside world. Planting is important. Plants can give off positive energy to help you feel revitalised.

 Resene Sea Fog	 Resene Atomic	 Resene Woodsman Uluru
 Resene Meteor	 Resene Jaguar	 Resene WB Woodsman Woody Bay

Top left: Resene Meteor trimmed with Resene Sea Fog frames the raised garden, against the Resene Jaguar fence, where Bayley has used largely deciduous trees like the Japanese Maple to make the most of seasonal changes.

Left: The garden includes a mix of poppies, daisies and perennials like aquilegia, felicia, lupin and penstemon to show off the different seasonal colours which pop against the Resene Jaguar house exterior, Resene Waterborne Woodsman Woody Bay pergola and Resene Woodsman Uluru deck.



 Resene Woodsman
Heartwood
 Resene
Skywater

What lessons did you learn from designing your own garden?

I learnt I have too many ideas and would need a bigger property to create them all. I learnt that if you can dream it, you can create it – you just need to work with the right people.

Left: “I get bored easily,” says landscape designer, Bayley LuuTomes, pictured on his Resene Woodsman Heartwood boardwalk. This Paraparaumu home is the eighth he’s bought and renovated.

Another tip is to hone in on the functionality of a space. “What do you want to achieve in your garden and how do you want to use it? That will help to determine the kind of plants you choose.”

Bayley’s journey to this point is fascinating: he arrived in New Zealand with his family in 1984, part of the wave of boat people who fled Vietnam following civil war. They were rescued off the coast of Thailand by the coastguard as their boat began to sink and spent a few years at a Thai refugee camp before coming to Wellington. They arrived in New Zealand with only the clothes on their backs and a few possessions, as most were lost overboard.

His love of gardening comes from his mother: growing up, Bayley would often help her out, learning about different plants and flowers. “We entered a local gardening centre competition in 2010 and won it, which was probably my *aha* moment.”

At the time, Bayley was working as an art director in the advertising industry but subsequently completed a horticulture degree. Shortly afterwards, he caught the eye of an English designer who organised for him to work alongside another British designer at the Chelsea Flower Show in London.

“That same year, I was the only New Zealander selected to show at the RHS Hampton Court Palace Flower Show, where I won a silver award for my Kiwi native design garden.”

He followed that up with two gold medals and the Young Designer of the Year Award at the Ellerslie International Flower Show, later representing New Zealand at the 2013 Gardening World Cup Flower Show in Japan, winning a silver medal for his Kiwi/Asian fusion garden.

Bayley has continued to make waves in the gardening world, winning awards at the Singapore Garden Festival and the Melbourne International Flower & Garden Show, where judges said his entry “showed how the best designs tread lightly”.

Now that he’s completed his own garden, Bayley is busy flexing his green fingers across his clients’ properties. “That’s where the real joy is for me – helping someone to achieve the garden of their dreams.” And although he hasn’t ruled out buying another house, Bayley is currently happily enjoying the fruits of his hard work. **H**

design Bayley LuuTomes www.facebook.com/bayleyluutomesdesign
words Sharon Stephenson
images Ryan McCauley

→ *turn the page for an alternative look for this garden...*

paint it right

Choose the right Resene colours and paints for the job.

dark days

Resene Woodsman, Resene Lumbersider and many other exterior products are available in CoolColour formulas. Resene CoolColours are recommended when choosing dark colours outdoors as the unique pigment technology reduces the sun’s heating effect on exterior surfaces compared to the normal colour to help keep the coating and surface cooler.



the great outdoors

Resene Lumbersider Low Sheen is an exterior paint suitable for many projects, including house exteriors, raised beds or pergolas. The waterborne formula provides maximum durability in exposed conditions.



go with the grain

The Resene Woodsman wood stains range protects and enhances the natural beauty of wood by allowing the grain to show through. Wood stains can be applied with a brush or fence-painting roller. If using Resene Woodsman Decking Oil Stain on your deck, try a PAL Deckmaster brush.

alternative solution - contemporary zen garden



Above: This restful design literally leads you down the garden path, past the Waikato fleck pebbles from Central Landscape Supplies, to the bench seat and through the circular entrance, both painted in Resene Ted. Along the way you pass the Lava U pot from Hawthorne Group featuring an architecturally pruned Japanese Yew and the elegant Rippledish water feature from Contemporary Water Sculptures. Through the circular door you can see the table and chairs from Jardin, painted in brick-toned Resene Pioneer Red to echo the Japanese Maple trees in the garden, contrasting nicely with the Resene Jaguar house exterior. Lighting the way are hanging lights under the eaves and accent lights in the garden from Gardens At Night.

top tip

Keep your concrete paths and other surfaces looking good with finishing products like Resene Walk-on Concrete Clear. For regular easy maintenance, spray on Resene Deep Clean every 6-12 months. No scrubbing or rinsing needed. It will work with the weather to help keep your paths looking cleaner.



serene suburban oasis



Landscape designer **Maisy Conway** of Sculpt Gardens suggests this alternative scheme:


I have re-imagined this space as a private, serene space to relax in. A pleached hedge along the fence screens the neighbouring house to create a private oasis. The modern reflection bench provides a place to sit and relax. The meandering path leads you through the garden to the circular opening in the wall, adding intrigue and a sense of space. The earthy colours of the Waikato fleck pebble add to the natural tranquillity, and I've chosen calming Resene Ted to paint the entrance gate and bench to connect with the concrete pathway and contrast with lush greenery. I chose lilac shades of flowers (creeping thyme and Campanula would work well) because they're a soothing colour, reminiscent of Resene Blue Gem. The Resene Pioneer Red dining set reflects the lovely rusty reds of the Japanese Maple trees, wonderful focal points against the serene greens and greys. Resene Pohutukawa or Resene Arriba would also work well.

email maisy@sculptgardens.co.nz **web** www.sculptgardens.co.nz

Resene
Pohutukawa 



Rippledish water feature
Contemporary Water Sculptures
www.watersculptures.co.nz
027 432 5642

Resene
Jaguar 



Lava U Pot
Hawthorne Group
www.hawthornegroup.co.nz
0800 882 211

Accent 8 lights
Gardens At Night
www.gan.com.au


Resene
Pioneer Red 



Resene
Arriba 

Waikato fleck pebbles
Central Landscape Supplies
www.centrallandscapes.co.nz
0800 005 445



 Resene Woodsman
Heartwood

Bistro folding chairs and table
Jardin Outdoor Furniture
www.jardin.co.nz
09 889 1200



illustration
Malcolm White

feathered friends



These kākāpō, rainbow lorikeet and ruru birds will be a hoot for the kids to make using pinecones and their favourite Resene colours.



Resene Half Blanc

Left: Pinecone birds to set your heart a-flutter. 'Karrie the kākāpō' in Resene Sushi, Resene Rebel, Resene Teak, Resene Half Blanc, Resene Black and Resene White. 'Lottie the rainbow lorikeet' in Resene Japanese Laurel, Resene Deep Koamaru, Resene Pursuit, Resene Teak, Resene White and Resene Happy. 'Rolly the ruru' in Resene Waterborne Woodsman Dark Oak, Resene Lone Ranger and Resene Happy. Wall in Resene Woodland and table in Resene Woodsman Dark Oak.

Resene White

Resene Happy

Resene Sushi

Resene Japanese Laurel

Resene Pursuit

Resene Lone Ranger

Resene Deep Koamaru

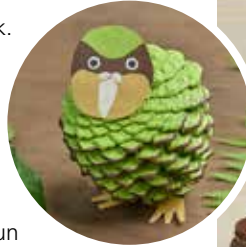
you will need:

- Resene testpots in your choice of colours. We used Resene Sushi, Resene Rebel, Resene Teak, Resene Half Blanc, Resene Black and Resene White for the kākāpō, Resene Japanese Laurel, Resene Deep Koamaru, Resene Pursuit, Resene Black, Resene White and Resene Happy for the rainbow lorikeet, and Resene Waterborne Woodsman Dark Oak, Resene Lone Ranger and Resene Happy for the ruru.
- Cardboard for the kākāpō head, ruru wings, lorikeet tail feather and each bird's feet
- Egg carton for the rainbow lorikeet head
- Buttons for the ruru eyes
- Scissors
- Blu-Tack (or a hot glue gun with an adult's help)
- Small paintbrush
- Drop cloth
- Clean rag

Resene Woodland 
 Resene Rebel 
 Resene Black 

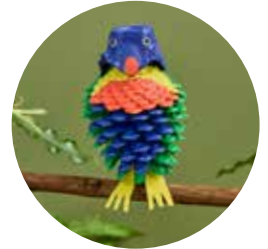
To make Karrie the kākāpō:

- Step 1:** Clean any dirt from your pinecone using a small paintbrush.
- Step 2:** Apply two coats of Resene colour to the entire pinecone. We used Resene Sushi.
- Step 3:** Using a small brush, paint the tips of the pinecone scales in a darker colour. We used Resene Rebel.
- Step 4:** Cut a round face shape out of cardboard.
- Step 5:** Apply a base colour to the shape. We used Resene Teak.
- Step 6:** Once dry, paint features in your chosen colours. We used Resene Sushi and Resene Rebel for the face, Resene Half Blanc for the beak and Resene Black and Resene White for the eyes.
- Step 7:** Draw the outline of two feet on a piece of cardboard.
- Step 8:** Cut out both feet, then paint them. We used Resene Teak. Secure the face and feet using Blu-Tack or a hot glue gun with an adult's help.



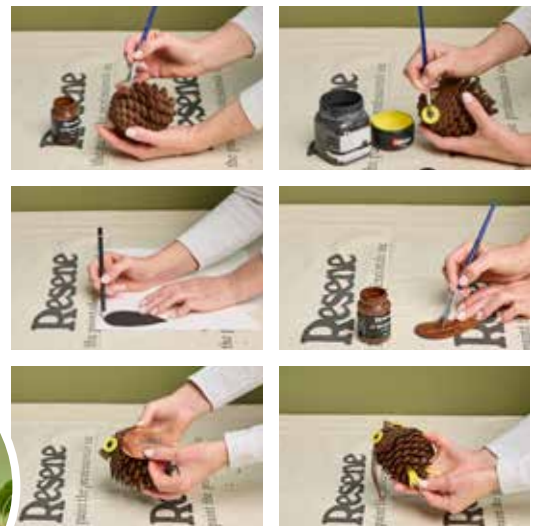
To make Lottie the lorikeet

- Step 1:** Clean any dirt from your pinecone.
- Step 2:** Paint a basecoat. We used Resene Japanese Laurel.
- Step 3:** Using a small paintbrush, apply two coats of a different colour to the lower section of the pinecone for the belly. We used Resene Deep Koamaru.
- Step 4:** Once dry, paint the lorikeet's chest. We used two coats of Resene Pursuit and Resene Happy.
- Step 5:** To make the lorikeet's head, cut a cup from an egg carton. Cut out a triangular shape at the front of the egg cup to resemble a beak. Paint the head in two coats of the belly colour. We used Resene Deep Koamaru with eyes in Resene White and Resene Black.
- Step 6:** Paint an oval shape on the front of the beak. We used Resene Pursuit.
- Step 7:** Attach the head to the lorikeet with Blu-Tack or a glue gun. Apply to the underside so it's not visible.
- Step 8:** Draw the outline of two feet and a tail feather on to cardboard and cut out.
- Step 9:** Paint your cardboard pieces. We used Resene Japanese Laurel and Resene Happy for the tail and Resene Happy for feet. Secure the tail feather to the back of the pinecone and the feet to the bottom, pushed up between the pinecone scales.



To make Rolly the ruru

- Step 1:** Clean your pinecone.
- Step 2:** Using a small paintbrush, apply one coat of Resene Waterborne Woodsman wood stain. We used Resene Dark Oak. Leave to dry then gently buff off any excess stain with a clean rag.
- Step 3:** Most pinecones have a wooden stem which can work as a beak. If your pinecone doesn't have a stem, cut out a small triangular piece of cardboard and stick to the pinecone. Paint the beak with two coats of colour. We used Resene Lone Ranger.
- Step 4:** Paint two buttons with two coats of eye colour, allowing them to dry between coats. We used Resene Happy and Resene Black for the pupils. Attach to the pinecone with Blu-Tack or glue.
- Step 5:** Draw two teardrop shapes onto cardboard for wings and cut out.
- Step 6:** Apply the same shade of Resene Waterborne Woodsman to the wings, using loose brushstrokes for a textured effect. Do both sides, allowing them to dry in between.
- Step 7:** Bend the wings to create a curve and attach to the sides of the ruru with Blu-Tack or glue.
- Step 8:** Draw the two feet onto a piece of cardboard, cut out and paint. We used Resene Happy. Attach to the bottom of the pinecone with Blu-Tack.



project Shani Luckman
images Bryce Carleton

Resene Teak Resene Woodsman Dark Oak

bench impress

Transform wooden pallets into a portable bench or kitchen island with Resene paints and wood stains.


This portable bench, made from wooden upcycled pallets, is equally useful as a kitchen island, a garage work bench or a drinks bar. Start with height. Kitchen benches, for example, are typically 900mm high. So, for a kitchen island, choose a pallet that's 800mm wide (shipping pallets come in various sizes). With a benchtop and castors/wheels, your finished island will be about 900mm high. If your benchtop is thin and you aren't using castors, 900mm-wide pallets are ideal. For a patio drinks bar, 1000mm is perfect.

Also, look at the length of the pallets and choose a couple the same as your benchtop. Or cut a benchtop to size. We've recycled an old coffee table, so we decided on pallets to match this length.

If you want to use your bench outdoors, swap the Resene Colorwood natural wood stain and Resene Aquaclear (indoor wood stain and clear finish) for Resene Waterborne Woodsman penetrating oil stain. No clear finish is needed for exterior wood stains.



Resene
Tea

Resene
Quarter Tea 




Resene
Poet



Resene
Spanish Green

you will need

- 2 shipping pallets (we used pallets measuring 1200mm x 1000mm)
- Timber for a benchtop (we used the top from an old, scratched rimu coffee table 1200mm x 600mm)
- 1200mm x 600mm x 12mm treated plywood (for shelf)
- 120 grit sandpaper
- 220 grit sandpaper
- Sanding block and/or electric sander
- Resene Quick Dry waterborne primer undercoat – we used a 500 mL can but you may need more or less depending on the size of your bench
- Resene Lumbersider Low Sheen tinted to Resene Spanish Green (or colour of your choice) – we used a 1 litre can but you may need more or less depending on the size of your bench

Resene
Casper 

- Resene Colorwood wood stain tinted to Resene Dark Rimu (or colour of your choice) – we used a 250 mL pack but you may need more or less depending on the size of your bench and the depth of colour you want to achieve
- Resene Aquaclear – we used a 500 mL pack but you may need more or less depending on the size of your bench and number of coats
- Paintbrushes
- Speed brush (for applying stain)
- Clean rags
- 4 x 6.3mm angle brackets with screws
- Electric screw drill and drill bits
- 4 x 40mm screws (for shelf)

Opposite: This kitchen bench is made from upcycled pallets and a repurposed coffee tabletop. Pallets, shelf and tray painted in Resene Spanish Green, benchtop in Resene Colorwood Dark Rimu protected with Resene Aquaclear. Walls painted in Resene Tea and Resene Casper. The flooring is finished in Resene Colorwood Shade. The jug is Resene Poet.

Step 1: Prep your pallets by first washing with Resene Timber and Deck Wash following label instructions. Once dry, sand the pallets using 220 grit sandpaper to smooth the rough edges. Wipe off all sanding dust.

Step 2: Apply one coat of Resene Quick Dry waterborne primer undercoat and allow to dry.

Step 3: Apply one coat of Resene Lumbersider Low Sheen tinted to Resene Spanish Green (or colour of your choice; Resene Ravine is a subtly muted grey-green that would also work well with walls in Resene Quarter Tea). When dry, lightly sand with 120 grit sandpaper to achieve a smooth finish. Use a clean damp rag to wipe away dust, then apply a second coat of paint.

Step 4: If using a recycled benchtop, sand it using 120 grit sandpaper to remove any existing stains and scratches. Wipe off sanding dust. Apply one coat of Resene Colorwood natural wood stain (ours was tinted to Resene Colorwood Dark Rimu) with a paintbrush or speed brush. Use a clean rag to wipe away any excess stain. Allow to dry. For a darker colour, apply another coat, wiping off any excess.

Step 5: Apply 3-4 coats of Resene Aquaclear.



Step 6: To determine the correct width of the shelf, position the pallets and benchtop (we allowed a slight overhang on the long sides of the benchtop) and measure the width between the pallets (it will sit on the middle pieces of the pallets). Ours measured 460mm wide. Cut your shelf to this measurement.

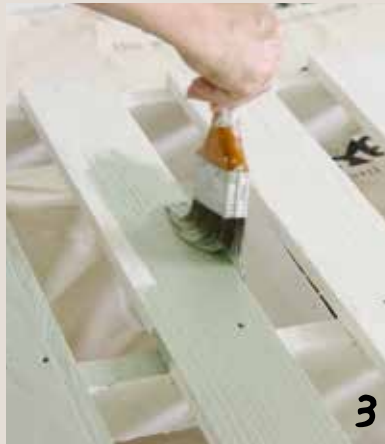
Step 7: Sand the shelf, then apply one coat of Resene Quick Dry waterborne primer undercoat, followed by two coats of Resene Lumbersider Low Sheen tinted to Resene Spanish Green (or colour of your choice) allowing dry time between coats. Once it's dry, screw it in place, drilling pilot holes first and then fixing the screws

Step 8: Position one of the brackets beneath the benchtop and against one of the pallets. Drill a pilot hole through each hole of the bracket into the pallet. Secure with screws. Repeat for the other three sides.

For a video on how to make this bench, visit www.habitatbyresene.com/palletbench.

project Jane Wrigglesworth
images Patrick Roberts

 Resene Colorwood Shade  Resene Colorwood Dark Rimu



teal appeal



Stylist and interior designer Megan Harrison-Turner won the Lifetime Achievement Award at the latest Resene Total Colour Awards. She shares some of the style secrets she's learned through her career and why she loves causing a Hullabaloo.

How would you describe your interior design work?

My work is about creating liveable, workable, growable spaces - the rooms need to be able to adapt and grow as people do. I believe styling makes the sum of the items in a composition better than the individual pieces, creating an ambience from a collection of objects.

What does an average day look like for you?

I spend a lot of time at site meetings, collecting props for shoots and visiting showrooms. I can only make colour schemes during the day in natural light, so checking emails and following up on projects often happens at the end of the day and in the evening.

What are your favourite Resene colours, and why?

That is a hard one. My favourites are the happy teal and cerulean colours, Resene Boost and Resene Hullabaloo. I also like softer whites, such as Resene Sea Fog and Resene Quarter White Pointer, as they are more forgiving and organic than pure whites. The colours I suggest to clients are often greyed-off hues, which are kinder to our intense light and easier to live with.

What is one of your favourite recent projects?

There may have been a few favourites for me, but it's the people and the clients I get to work with that make a project awesome. I recently styled a home and kitchen with splendid sea views, and all the home's colours are inspired by water. The kitchen cabinetry in this home is in Resene Gunmetal, and the dark colour draws the eye to the window and sea beyond, where there are sometimes orcas in the bay.

What have you learnt over your career, and how have things changed since you started?

I have learnt a lot, but I still don't know enough! Colour and style are like wine, everyone has an opinion, and those opinions are subjective. Fortunately, with Resene, there are enough colours for everyone's tastes.



Above right: Megan Harrison-Turner, in front of a Resene Carpe Noctem backdrop, is the winner of the Lifetime Achievement Award in the latest Resene Total Colour Awards.

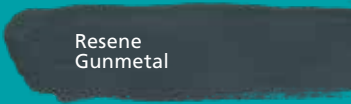
Above left: Megan helped the owners of this home choose Resene Gunmetal as the cabinetry and wall colour for their kitchen, designed by Damian Hannah of German Kitchens, www.germankitchens.nz

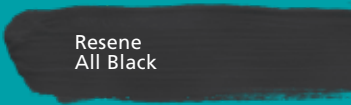
 Resene Hullabaloo

 Resene Carpe Noctem

 Resene Sea Fog

 Resene Boost

 Resene Gunmetal

 Resene All Black

Do you have advice for choosing a colour palette for a home?

Start with the material that is in the shortest supply or the hardest to come by, such as kitchen countertops. Paint should be your last choice when decorating a room, as there are so many Resene colours to suit the final look. I always ask clients for three emotive words to describe how they want the space to feel – then I'm off. I find inspiration in almost everything – a view from a window, the architecture and the period of the house. Always check your colour samples during the day and night, and don't select a colour or product on a screen before you have seen it in person.

What's your best tip for beginner DIYers?

Coco Chanel once said "The best colour in the whole world is the one that looks good on you." I have the same sentiment but would say the best colour is the one that looks good for the room. You want to create that feeling of coming home and seeing something you love to trigger that golden feeling of 'relax, you're home now'. We should all have that.

See more of Megan's work at www.colourwhich.co.nz.

words Jessica Weale
images Bryce Carleton, Leon Rose

Resene Quarter White Pointer 



Resene Bleached Cedar

Resene Tiri

Resene Crowshead

Resene Dark Oak

Resene Pitch Black

Resene Colorwood Ironbark

Resene Colorwood Treehouse and Resene Aquaclear

Resene Waterborne Woodsman Pitch Black

Resene Woodsman Decking Oil Stain Crowshead

Resene Bark

Resene Bushtrack

Resene Nutmeg

Resene Limed Ash

Resene Skywater

Resene Heartwood

Resene Grey Green

Resene Kwila

Bring out the beauty of timber

with Resene wood stains, wood oils and clear timber finishes

Enhance, rejuvenate and protect your home's timber features with the **Resene woodcare** range, everything you need to make the most of your home's natural beauty inside and out. Come in and see us today and enjoy the Resene difference!

Resene Kwila Timber Stain

Resene Colorwood Dark Oak and Resene Aquaclear

Resene Driftwood

Resene Equilibrium

Resene Oiled Cedar

Resene ColorShop *your woodcare experts!*

resene.com/colorshops

Resene Colorwood Greywash

Resene Colorwood Mahogany and Resene Aquaclear

Resene Banjul

Resene Natural

Resene Jarrah Tree

Resene Pickled Bean

Resene Woodsman Cedar

Resene Limed Oak

Resene Aquaclear

Resene Colorwood Rock Salt and Resene Aquaclear

Resene Colorwood Whitewash

Resene Uluru

Resene Japanese Maple

Resene Cedar

Resene Riverstone

Resene Rock Salt



Positively Brilliant

Lighting⁺