

N.B.

This chart is from the  
Resene historical file.

Please refer to current  
Resene colour charts  
for the latest colour  
options.



**Resene**  
the paint the professionals use

### Other cool ideas

#### Create clouds

Clouds can be a very relaxing finish to any room, making it seem airy and giving something to look at when stuck in bed during the day. To create a cloudy sky, apply a base colour of blue to the full ceiling area and allow to dry. Then use a sponge to lightly apply the white clouds. Dip the sponge in the white paint, then dab onto paper to remove excess paint before applying the sponge to the ceiling. Just add a few clouds at the start and allow to dry - you can always add more clouds later, but it will be much harder to take them away!

#### Super stencils

Add your favourite pictures, designs or shapes to the walls and create themed walls in next to no time. Here's how...

1. Find or make the stencil you want to use. Stencil pictures can be downloaded from the Resene website, [www.resene.com/stencils](http://www.resene.com/stencils), traced onto light cardboard and cut out to get you started. Tape the stencil to the wall using low tack masking tape.
  2. Once you've got your stencil, dip your brush into your chosen paint colour. Dab the brush on a paper towel to get rid of any extra paint then place your brush at the edge of the stencil opening and apply the paint by dabbing the surface lightly or moving the brush in a circular motion.
  3. Repeat step two until you get the colour intensity you desire.
- You can also stencil using a roller. Instead of step two and three above...

2. Get a small roller, moisten it with water and squeeze it between paper towels to dry the excess water off leaving a very slightly damp roller.
3. Put a small amount of the paint colour you plan to use on a paper plate or in a flat bottomed low-sided container. Roll the roller through the paint and then onto a clean part of the plate or container (or use a separate sheet of paper) to ensure the paint is distributed evenly on the roller. Roll back and forwards across the cut-out area of the stencil. Make sure you roll in several different directions to get the best coverage.

#### See stripes

Stripes can be a neat effect for a room, allowing you to use two (or even more) favourite colours all over the room.

Paint one colour over the complete area where you wish to create stripes and allow to dry. To create stripes, place low tack masking tape along the edge where you want the stripe to go. Make sure the tape is well pushed down on the edges otherwise the paint will creep underneath it. The best idea is to buy tape that is the same width as the stripes you want to create, as this will make your job easier. Apply as many pieces of tape as you want to create stripes.

Paint the second colour over the exposed area and onto the taped area. Carefully remove the tape before the paint dries.

If you wish to paint wider stripes and can't find wide enough tape, simply place tape down either side of the area where you wish to create stripes and then paint between the two pieces of tape and just slightly onto the taped area. Be careful not to paint beyond the tape. Carefully remove the tape before the paint dries.



Resene, proud to support Plunket.

Colour	Colour code	Tone	Approx LRV%	RGB	Basecoat (for metallics)
Ballerina	V78-058-342	W	54	232 153 190	
Bedazzle m	M54-081-355	SA	22	156 67 103	Rouge
Blue Jeans	B53-058-263	L	21	78 101 144	
Bright Spark uc	Y83-168-082	Y	61	243 190 51	
Buzz	G92-140-093	L	80	251 235 80	
Candy Floss	R46-132-022	R	15	159 38 61	
Carnival	V43-099-337	MG	13	126 42 101	
Chaos	R44-148-034	R	14	146 42 49	
Colour Me Pink	R46-109-000	MG	15	169 12 80	
Cotton Wool	N96-006-099	W	91	242 240 230	
Dancing Girl	V64-080-301	P	33	148 112 196	
Dizzy Lizzy uc	G76-163-118	Y	50	129 202 43	
Dreamer	B91-019-237	W	79	211 229 239	
Enchanted m	M60-078-344	SA	28	146 58 100	Rouge
Fairyflight	V87-030-296	W	69	213 199 232	
Ferris Wheel	V53-093-303	L	21	114 74 161	
Fizz uc	Y84-198-087	Y	64	245 204 35	
Flower Power cc	V83-035-325	W	62	222 183 217	
Funtasia m	M48-091-301	SA	17	76 51 113	Daisy Bush
Get Reddy	R49-160-036	R	17	173 53 57	
Glitterbug m	M50-100-022	SA	18	169 42 55	Pirate
Go Go Go m	M73-080-131	SA	45	118 173 76	Anise
Gobstopper	V44-095-303	M	14	88 53 128	
Hi Jinx uc	O69-171-062	Y	41	229 127 61	
Hopskotch	V67-072-354	L	36	205 109 147	
Kermit cc	G55-122-138	Y	23	54 129 54	
Lickety Split uc	G82-173-113	Y	60	163 217 45	
Lucky Dip	G91-067-117	W	79	209 239 159	
Neva uc	G80-187-101	Y	58	198 214 13	
Orang-atan uc	O61-167-048	Y	29	197 79 51	
Pink Panther	R53-084-002	D	21	180 56 100	
Pretty In Pink	R90-016-359	W	76	239 214 218	
Princess	R84-034-358	W	65	237 184 199	
Razzamatazz cc	R37-107-030	MG	10	112 31 40	
Rocket	R41-126-033	R	12	134 40 46	
Sea World	B40-097-275	D	11	50 63 117	
Sherbert	G89-055-110	W	74	210 224 158	
Shooting Star uc	G90-165-091	M	76	253 227 54	
Slipper	R94-008-031	W	86	244 234 228	
Smiles	G94-108-095	P	84	251 240 115	
Snap	B70-088-235	P	41	91 160 208	
So Cool m	M83-003-232	SA	62	158 160 161	Silver Chalice
Soft Whisper	Y94-028-083	W	85	248 234 202	
Softly Softly	Y96-015-089	W	90	241 235 217	
Solid Gold* m	M69-066-078	SA	39	146 119 72	Apache
Splat	B84-042-243	W	65	165 206 236	
Splish Splash	B48-102-250	D	17	41 89 139	
Sports Star	B62-098-238	L	31	61 133 184	
Sugar And Spice m	M67-062-336	SA	38	155 98 139	Strikemaster
Super Duper	B53-094-264	L	21	66 99 159	
Surfs Up cc	B29-058-284	U	6	31 33 66	
Three Wishes	B89-022-266	W	74	210 218 237	
Top Secret uc	G70-153-114	Y	41	122 172 33	
Tutti Frutti	G82-077-130	P	60	159 211 133	
Unicorn	V72-063-292	W	44	159 144 208	
Wet N Wild	B49-089-260	U	12	37 67 117	
Wham	G69-148-130	Y	39	95 179 58	
Yabbdabbadoo	G60-087-202	M	28	0 139 151	
Yeehaa m	M59-082-236	SA	28	0 108 152	Optimist
Zappo	V83-028-285	W	62	196 192 226	
Zoop De Loop m	M52-085-267	SA	20	37 70 131	Tory Blue

**Key:** D = Deep L = Light M = Mid MG = Magenta  
 P = Pastel R = Red SA = Silver aluminium U = Ultra deep  
 W = White Y = Yellow 2 \* = H/O order only

cc = Also available as a Resene CoolColour™. A change in tone or product may be required for some colours to achieve a Resene CoolColour effect.  
 m = Metallic colour, requires a coloured basecoat. The most stand out metallic finishes are achieved by spray. Ask Resene staff for application instructions when you are planning a metallic finish.  
 uc = An undercoat is recommended for the optimum finish.

**Note 1:** The approximate light reflectance value (LRV) of a colour indicates the amount of visible light that a colour will reflect. Black has a light reflectance value of 0% and absorbs all light. The surfaces are consequently very dark and can get very hot. In contrast, white has a light reflectance value of 100% and keeps a building light and cool. All colours fit within these two extremes. A Resene CoolColour™ is formulated to reflect more of the sun's energy, improving the colour's heat and total solar reflectance (TSR) properties compared to a normal colour, keeping the coating, substrate and building cooler.

**Note 2:** Mid to dark colours are not suitable for some exterior substrates and if used may cause damage to the substrate, such as warping, checking and premature failure. Always check with the substrate supplier prior to commencing any work to ensure colour selections fit within their guidelines. Resene also manufactures Resene CoolColour technology and this may increase the colour range that can be suitable over some heat sensitive substrates. Refer Resene for further information.

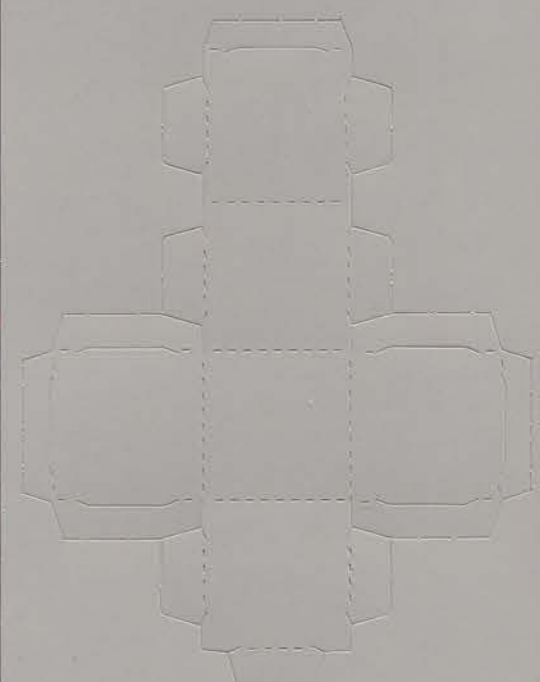
**Note 3:** Tones listed above are subject to change if colours are reformulated.

**Note 4:** Colours may be available in selected products or sizes only. Check with Resene ColorShop or Reseller staff to ensure your selected colour is available in the product and/or size you require.

**Note 5:** This colour chart is finished with Resene SpaceCote Low Sheen waterborne enamel, a product ideally suited to kitchens, bathrooms and broadwall areas. Metallic chips are finished in Resene Enamacyl Metallic.

### Colour chip isolator

Detach and place over selected colour to view your choice on a neutral background without it being affected by surrounding colours.



### Get coloured with Resene KidzColour

Strongwilled, excitable and opinionated - today's children know just what they want so to make it easy to choose colours, Resene presents Resene KidzColour - a range of hues and metallics designed for children of all ages.

Colour options have been tested with variously aged children giving a range focused on bright bold, full chroma hues and metallics - perfect as a statement by themselves or combined with another equally bold hue for an invigorating scheme.

For those with a newborn in the house, Resene KidzColour also includes a smaller palette of soft pastels that may be mixed and matched with each other or used as a base for one of the brighter accent colours.

Be the envy of all your friends and get coloured with Resene KidzColour! Best of all, because it's just a coat of paint, you can add more colours or repaint when favourite colours change.

The Resene KidzColour range also includes favourite effects finishes, such as Resene Magnetic Magic, Resene Blackboard Paint and Resene Pearl Shimmer. Get creative - download stencil images from the Resene website, [www.resene.com/stencils](http://www.resene.com/stencils), and create stencilled masterpieces for just the cost of a different colour of paint.

### Tips and tricks

- Think ahead... children grow fast and tastes change rapidly. So make sure your plan incorporates options for the future. If you don't mind completely revamping the room in a few years, you can opt for a fully themed room... but be prepared to change it later!
- Latest trends and fads can be incorporated using cushions, posters, wallpaper borders and toys that can be easily changed as the trends and fads do.
- Check out what others have done in the past in the online Resene Decorating inspiration gallery on the Resene website, [www.resene.com/inspirationgallery](http://www.resene.com/inspirationgallery), and use their ideas as inspiration for your own.
- Children tend to spend a lot of time playing on the floor, so if you're planning on hard flooring try and include a soft rug or mat with non-slip underlay for playing on. Avoid anything too light in colour as the occasional accident is bound to occur!
- Walls and doors will also be in for a workout so opt for a washable finish, such as a Resene waterborne enamel to make cleaning up marks easy.
- Think beyond the walls. Paint furniture, toys and frames in favourite colours.
- Check out Resene EzyPaint virtual painting software and try out your favourite colour scheme options without lifting a paintbrush. Available free online from the Resene website, [www.resene.com/ezypaint](http://www.resene.com/ezypaint). Resene EzyPaint is also suitable for children to use, provided you don't need the computer back for a while!
- Always try out the colour scheme you plan to use with Resene testpots just to make sure it's what you want before you start painting.
- There are lots of great effects you can create using effects finishes, stamps, sponges and general arts and crafts activities to add wall art, pencil holders and more to the finished room, so let your imagination run wild. Check out our tips on some of the finishes you may like to try out for yourself to get you started.
- Children tend to have firm favourites when it comes to colours - don't be afraid to let them go with their favourites - you may just be surprised how much you like it!



Get the look (clockwise from top left): Resene Hi Jinx and Resene Pretty In Pink; Resene Blackboard Paint on Resene Magnetic Magic with Resene Lickety Split, Resene Bright Spark, Resene Wham, Resene Tutti Frutti and Resene Unicorn; Resene Lickety Split, Resene Kermit, Resene Tutti Frutti, Resene Top Secret and Resene Surfs Up; Resene Splat with Resene Wet N Wild; Resene Cotton Wool with Resene Razzamatazz, Resene Sea World and Resene Fizz; Resene Blackboard Paint.

1800 738 383 [www.resene.com.au](http://www.resene.com.au) Resene the paint the professionals use 0800 RESENE (737 363) [www.resene.co.nz](http://www.resene.co.nz)

© Copyright Resene Paints Ltd, February 2008. Accurate reproduction of the colours shown in this colour range is only available using genuine Resene premium products, tinters and formulations. These are not available from other manufacturers or retailers. Unauthorised use of Resene colours and colour names breaches Resene's copyright and trademark rights. Colours may appear to vary with different gloss levels, lighting, substrate texture and application method and technique. Printed on environmentally responsible paper produced in an ISO14001 (Environmental Management System) accredited mill, from Elemental Chlorine Free (ECF) pulp sourced from sustainable forests and plantations. Printed using vegetable-based inks. Please recycle.





Finish!

69 Razzamatazz R37-107-030 cc

68 Get Reddy R49-160-036

67 Go back 3!

66 Orang-atan O61-167-048 uc

65 Bright Spark Y83-168-082 uc

64 Wham G69-148-130

63 Go forward 2!

62 Kermit G55-122-138 cc

61 Top Secret G70-153-114 uc

60 Lickety Split G82-173-113 uc

59 Fizz Y84-198-087 uc

58 Hi Jinx O69-171-062

57 Candy Floss R46-132-022

56 Chaos R44-148-034

55 Rocket R41-126-033

54 Extra turn!

53 Glitterbug M50-100-022 m

52 Carnival V43-099-337

51 Colour Me Pink R46-109-000

50 Bedazzle M54-081-355 m

49 Princess R84-034-358

48 Shooting Star G90-165-091 uc

47 Miss a turn!

46 Neva G80-187-101 uc

45 Go Go Go M73-080-131 m

44 Dizzy Lizzy G76-163-118 uc

43 Tutti Frutti G82-077-130

42 Lucky Dip G91-067-117

41 Buzz G92-140-093

40 Smiles G94-108-095

39 Pretty In Pink R90-016-359

38 Go back 3!

37 Enchanted M60-078-344 m

36 Pink Panther R53-084-002

35 Hopskotch V67-072-354

34 Sugar And Spice M67-062-336 m

33 Ballerina V78-058-342

32 Slipper R94-008-031

31 Cotton Wool N96-006-099

30 Softly Softly Y96-015-089

29 Soft Whisper Y94-028-083

28 Sherbert G89-055-110

27 Miss a turn!

26 Yabbadabadoo G60-087-202

25 Yeehaa M59-082-236 m

24 Splish Splash B48-102-250

23 Sports Star B62-098-238

22 Splet B84-042-243

21 Flower Power V83-035-325 cc

20 Dancing Girl V64-080-301

19 Gobstopper V44-095-303

18 Extra turn!

17 Ferris Wheel V53-093-303

16 Funtasia M48-091-301 m

15 Unicorn V72-063-292

14 Fairylight V87-030-296

13 Zappo V83-028-285

12 Go back 1!

11 Three Wishes B89-022-266

10 Blue Jeans B53-058-263

9 Sea World B40-097-275

8 Zoop De Loop M52-085-267 m

7 Surfs Up B29-058-284 cc

6 Wet N Wild B49-089-260

5 Super Duper B53-094-264

4 Sna! B70-086-235

3 Dreamer B91-019-237

2 So Cool M83-003-232 m

1 Solid Gold M69-066-078 m

Start!

Not ready on time! Down you go

A cool treat! Take a climb

Carnival fun! Take a climb

Total chaos! Down you go

Royal move! Take a climb

Miss the lilypad! Down you go

Chased by a glitterbug! Down you go

Looking good! Take a climb

Buzz attack! Down you go

Great tunes! Take a climb

Hit a home run! Take a climb

Too many treats! Down you go

Hayfever attack! Down you go

Looking stylish! Take a climb

Fall into the water! Down you go

Super move! Take a climb

Dreams come true! Take a climb

Take a tumble! Down you go

Once you've chosen your favourite colours, join my friends and I in a game of ladders and splats!



Try out these cool effects!

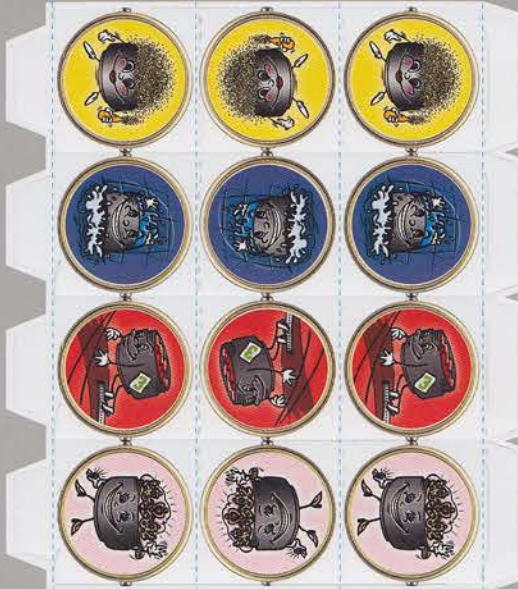
**Get writing**  
 Let your children's ideas loose on their walls with Resene Write-on Wall Paint. Once dry and cured you can use whiteboard markers or liquid chalk to write all over the wall without damaging the surface. And when it's time to delete an idea just grab a soft cloth or whiteboard eraser, rub out the marker and start again. Simply apply Resene Write-on Wall Paint over your existing light coloured wall paint or over your new wall colour. With Resene Write-on Wall Paint there's no limit to your children's ideas.

**Simply magic**  
 Resene Magnetic Magic is a magnetic base coating loaded with iron oxides. Lots of fun for children of all ages and handy in home offices and other areas around your home. Best used with high quality magnets for maximum magnetic effect. Overcoat with your favourite Resene colour.

**Chalk artist**  
 Resene Blackboard Paint is a premium washable waterborne coating for all types of interior and exterior smooth surfaces where a hardwearing blackboard coating is required. It is easy to apply - in fact the hardest part is keeping would-be chalk artists away long enough to give the paint time to dry before they start covering it up with chalk!

**Shimmer space**  
 Resene Pearl Shimmer is a waterborne pearlescent glaze ideal for creating sparkled features. Perfect when a little space dust or fairy dust is needed. Either apply direct to existing painted areas for a shimmer finish or get your local Resene ColorShop or Reseller staff to add a touch of tinter and create unique two tone effects of solid colour with a shimmery colour topcoat. The most shimmering results will be seen over dark and complex hues as these provide the greatest contrast to the shimmering pigments.

**Get crackled**  
 Create cool crackled finishes - pick your favourite colours and paint one onto the surface. Allow to dry, paint a coat of Resene Crackle effect then leave to dry. Apply your second favourite colour and stand back and watch while the Resene Crackle effect shrinks and cracks to reveal the first colour. Recommended for furniture and small areas only. Seriously cool!



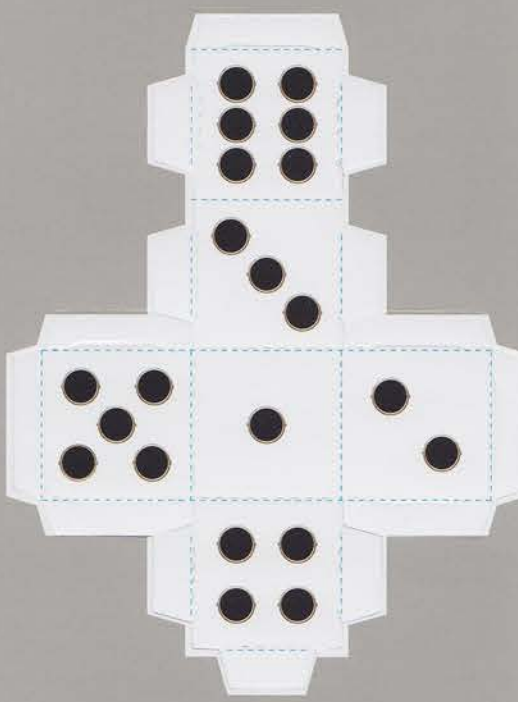
**Playing counters**

1. Punch out characters.
2. Fold into triangle shape. The blue lines are the fold lines.
3. Tuck in tabs to secure.



**Playing dice**

1. Punch out dice.
2. Fold into dice shape. The blue lines are the fold lines.
3. Tuck in tabs to secure.



...and then you're ready to play! Good luck!

