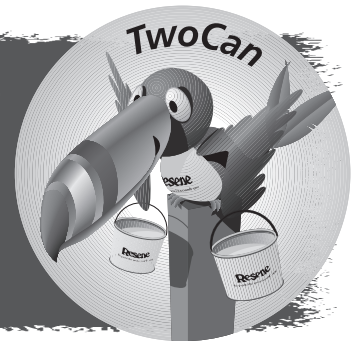


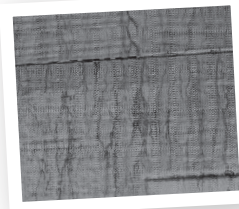
“ As the weather cools and the sun decides to get up late and finish early, inevitably it’s dark and cold when you leave home and equally dark and cold when you return again. If it is a bit on the chilly side in your neck of the woods, make sure you remember the **Resene Wintergrade paint range**. These products are designed for the cold and can cure down to a supercool 2°C. And if you find you need to defrost your fingers first, ask Resene staff for a free handwarmer while stocks last. ”



## Wet wise

With the onset of the colder and wet weather, surfactant leaching can become more common. So here’s the inside story on surfactant leaching, just in case you’ve forgotten the specifics.

Waterborne interior products in particular are vulnerable to surfactant leaching, where some areas of the paint surface appear to be covered in white streaks, giving a watermark effect. Surfactant leaching only affects the appearance of the paint finish, not its durability. It cannot be accurately predicted or prevented but tends to occur when moisture settles on a film, such as in a steamy room like a bathroom when there is moisture in the air on a cold and wet day or in humid conditions. Colours with higher levels of tinter are most prone to surfactant leaching.



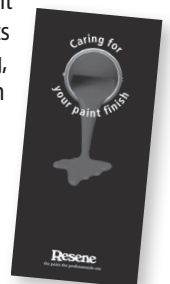
**Surfactant leaching is caused by water sitting on freshly applied waterborne paints.**

<<

Surfactant leaching is caused by water sitting on freshly applied waterborne paints. Water softens the fresh paint and draws out water soluble surfactants. As water dries off these are deposited on the

surface. These deposits are easily removed early on by simply cleaning the surface following the interior paintwork instructions. The problem may occur once or twice again before all leachable material is completely removed. If left, the deposits can etch the surface and leave a permanent mark. This should diminish over a few months and is only of cosmetic concern.

Surfactant leaching is usually associated with marginal painting conditions. Tinted paints are more prone to surfactant leaching than are white paints because of the ingredients that are present in tinters. To prevent surfactant leaching, it is best to avoid application in the late afternoon if cool, damp conditions are expected in the evening or overnight. Ensure adequate ventilation is maintained during the drying period. If surfactant leaching does occur, clean the surface as soon as possible to avoid permanent marking following the instructions in the **Resene Caring for your paint finish brochure** – FREE from Resene ColorShops or available from our website.



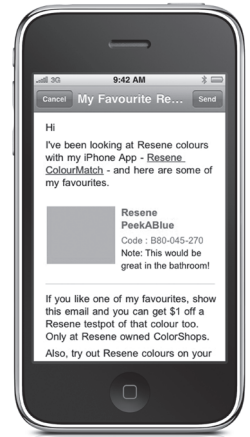
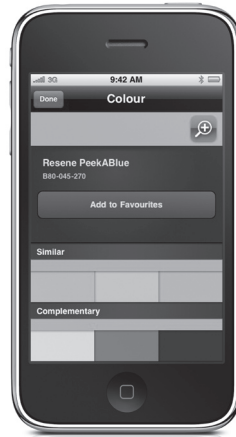
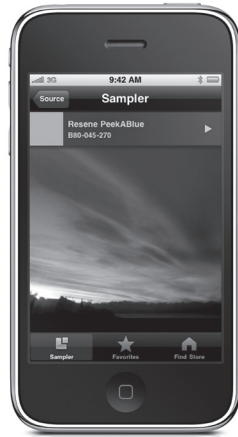
## Bullseye!

“This story was told to me by another painter, a disaster story!” says Mike Bagley who passed it onto us...

“He was up on a steep roof painting and had taken an extra 10L can of paint and balanced it near the top. It started to slide down the roof so he slid down and grabbed it but realised he was going to fall off the roof so he threw the bucket off and managed to stop. The bucket flew over, hit a tree branch and was catapulted back to the house at great speed. It went straight through the French doors and burst its contents all over very expensive lounge furniture. It was oil based and took him a week with cleaners to clean.”



**A HARD DAY AT THE OFFICE**



# Snap. Touch. ColourMatch!

**A colour catches your imagination – a dramatic cloud formation, sunrise, spectacular floral display or dynamic building colour in the city. Now you can catch that colour on your iPhone™ and match it to a Resene paint colour at the touch of your screen with FREE Resene ColourMatch.**

Resene's ColourMatch application gives you instant access to thousands of Resene colours enabling you to colour match from any image taken on your iPhone. Or use the colour spectrum to select a colour and find the nearest Resene paint colour. Anytime, anywhere, you can put the Resene ColourMatch system to work.

Once you've matched your colour to a Resene colour, use Resene ColourMatch to find complementary colours simply by touching the screen.

Save your matched colours into your Favourites so you can find them easily later and email them to colleagues, friends, family or yourself. A Resene ColorShop locator is also accessible at a touch.

Visit the Resene website at [www.resene.com/colourmatch](http://www.resene.com/colourmatch) for more information and a direct link to the App Store<sup>SM</sup> to download FREE Resene ColourMatch today.

iPhone is a trademark of Apple Inc., registered in the U.S. and other countries. App Store is a service mark of Apple Inc.

## Chilled out

**If you are in a hurry to finish and are tempted to speed up the drying time, then bear in mind this advice from Tim of North Treat:**

"I was helping a mate spray enamel on walls inside a big commercial building. My mate thought it would be good idea to put a gas heater inside the room to speed up the drying time. Things were going great but the heater was up against the wall that he was about to spray. Not thinking (doh!) he carried on spraying right over the top of the heater and almost blew us and the whole building to high heaven. So the moral of the story is to never use a gas heater to speed up dry times. Paint (especially enamel) is best left alone."



## Unleash your inner artist



The Resene Mural Masterpieces Resene is running a mural competition with over \$5000 of prizes to be won. Entry is easy - simply register your entry details online at [www.resene.com/murals.htm](http://www.resene.com/murals.htm) or drop into your local Resene ColorShop and pick up a copy of the **Mural Masterpieces Competition registration form**. Send your completed registration to Resene and you'll receive an entry pack containing all the information you'll need to get started.

**ENTRIES CLOSE 5 NOVEMBER 2010**



That's all for now – catch ya next month!

TwoCan, Editor.

