

Obviously Organic

The Spring 2010 runways were awash with a **new lease on modern, elegant** and understated dressing aided by a refreshing and simplified COLOUR PALETTE OF LIMPID COLOURS THAT ARE SEMI TRANSPARENT AND IRIDESCENT. Let's herald in the new decade with a clean slate... By Dan Ahwa

Easy, light and luminous, the new spring pastels take their cues from monochromatic tones and natural palettes for a colour way that is fresh and modern- but not at all washed out. Silky beige tones, translucent greys and smoky greens are highlighted by gold and silver metallics for a look and feel that is down to earth and obviously organic.

GREY

Signifying neutrality between black and white, grey tones make a transition from winter to summer in a lighter shade such as dove grey and pale charcoal.



RESENE DETROIT

A warm grey with a distinctive smoky hue, conveying a formal, chic mood. Looks great with grey whites, spicy gold greens or carbon browns.



RESENE EMERGE

Emerge is a grey and green sea foam hue, sedate and modest in mood. Works well with mid walnut browns, sea greens or sophisticated neutrals such as half oilskin.



PHI



RESENE RUTHERFORD

A soft gherkin green, hinting of brave journeys. With a nod to khaki green, Rutherford pays homage to cool, calm and casual.

www.apparelmagazine.co.nz



CHLOE

BEIGE

Chameleon like and versatile, beige evokes comfort and calm, blending in the coolness of white and the warmth of brown.

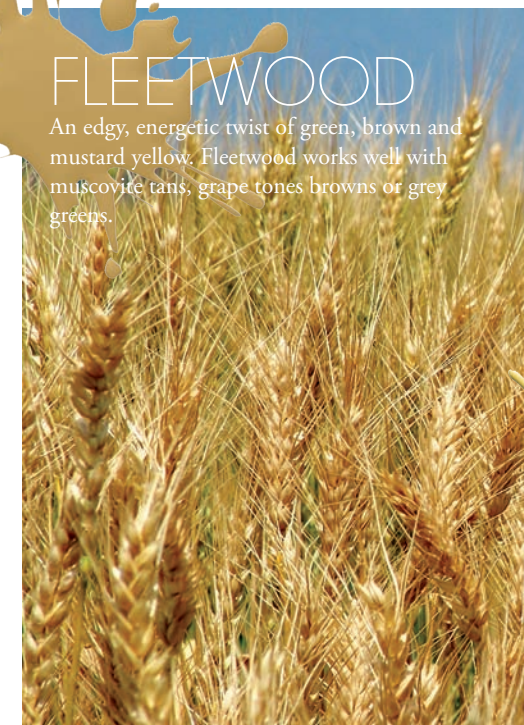


RESENE PERFECT TAUPE

A pastel Maltese grey beige drifting towards tones of pink. Blends in well with grey greens, walnut browns or azurite blues.

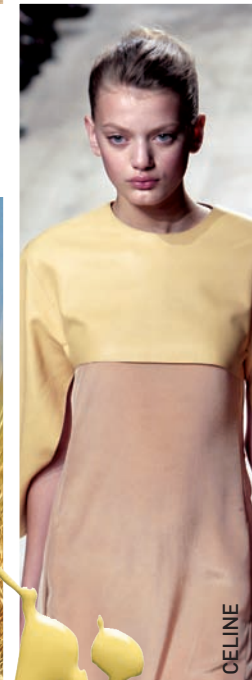
MUSTARD

Popular in the mid 70's, mustard hues emerged from the Spring 2010 runways in full force, updated in flattering palettes that combine the yellow tinged colour with hints of gold.



FLEETWOOD

An edgy, energetic twist of green, brown and mustard yellow. Fleetwood works well with muscovite tans, grape tones browns or grey greens.



RESENE MOONBEAM

A toasted yellow with a sprinkle of orange

CELINE



HERMES



OMBRE

Francisco Costa, creative director for Calvin Klein collection sent out a lineup of ethereal models dressed in ombre gowns and shift dresses for Spring 2010. The dip dye effect is not only eye-catching, but can be flattering to the form when utilized on the right garment. Herve Leger's signature body conscious bandage dresses also featured the ombre colour trend, adding a hint of softness to an otherwise sexed up silhouette.

AVAILABLE FROM
RESENE COLORSHOPS
www.resene.co.nz
0800 737 363

RESENE COLOURS 1: RESENE DETROIT 2: RESENE EMERGE 3: RESENE RUTHERFORD 4: RESENE EVOLUTION 5: RESENE PERFECT TAUPE 6: RESENE MOJITO 7: RESENE FLEETWOOD 8: RESENE MOONBEAM

1

2

3

4

5

6

7

8



RESENE MOJITO

A diffusion of earthy tan, beige and gold- unique and tasty. The perfect complement to moody reds, turquoise blues or deep yellow greens.