

PRETTY IN PINK

From pastel palettes to purple tones, **PINK** is a colour that evokes feminine wiles. From cute to seductive, pink has been utilised in WINTER COLLECTIONS FOR 2010 from designers such as Donna Kara, Phillip Lim 3.1 and Charles Anastase

A unique mix of pink red and white, the colour experts at Resene have played with pink and come up with a multitude of rosy variations. From fuchsia inspired tones to dusky shades, designers injected small amounts of pink to complement key colours, or to simply add a sense of feminine frivolity in the mix.

RESENE MISS HUSSY

A wayward hot pink with considerable personality. This pink is not for the shrinking violets. Bold, flirtatious and in your face, Resene Miss Hussy is a knock out pink hue.



PHILLIP LIM 3.1

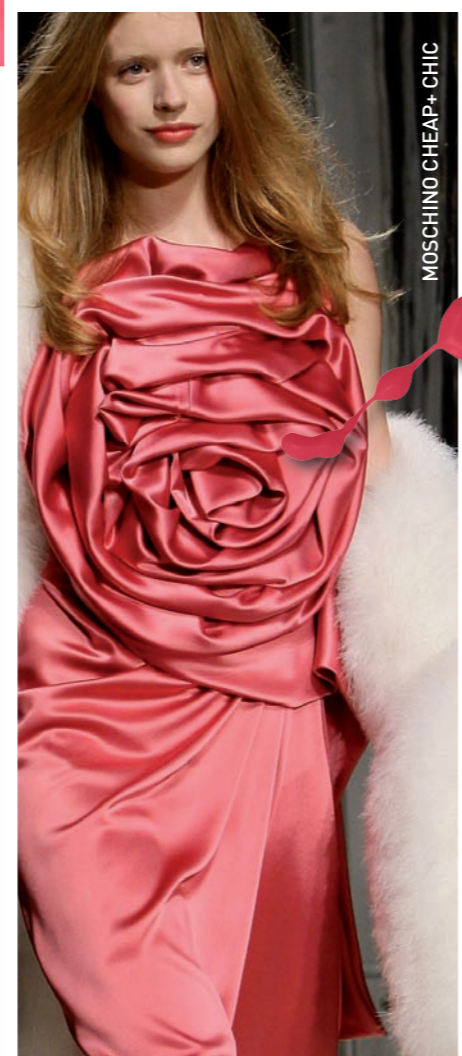


RESENE VIBE

A clash of pink and red, cheeky and full of lively energy and fun. Full and luscious, this pink evokes life and laughter and is the perfect antidote to those dull days ahead.

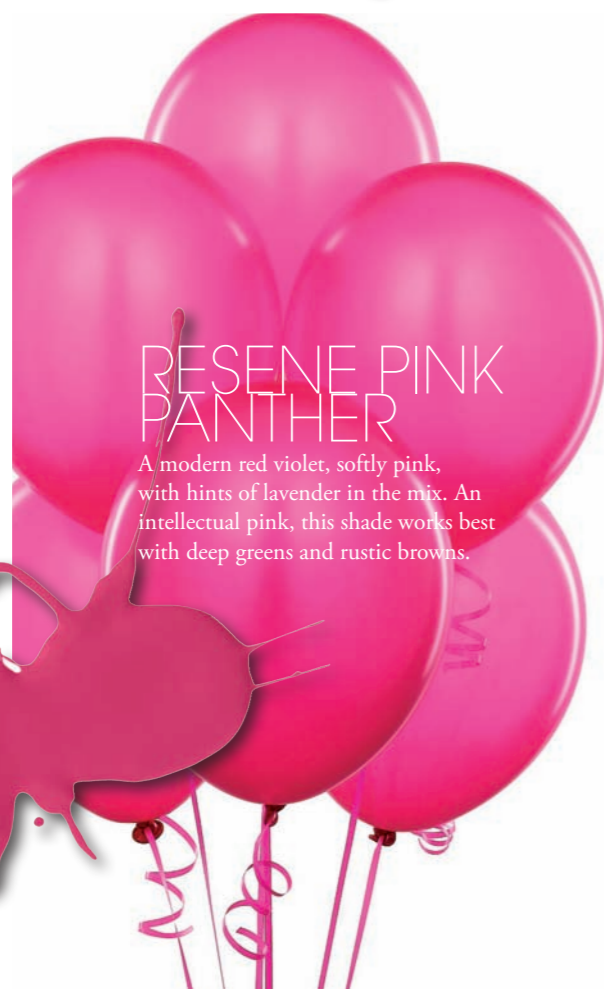


MOSCHINO CHEAP & CHIC



RESENE PINK PANTHER

A modern red violet, softly pink, with hints of lavender in the mix. An intellectual pink, this shade works best with deep greens and rustic browns.



RESENE ROSE BUD

A racy flamingo pink, flirtatious and fun. Pastel tone and light, works well with fuzzy knits and chunky wool blends. A great way to ease in to the Spring Summer months, this pink transcends all seasons.



CHARLES ANASTASE



- RESENE COLOURS
1. RESENE MISS HUSSY
 2. RESENE PINK PANTHER
 3. RESENE VIBE
 4. RESENE ROSE BUD
 5. RESENE BLISS
 6. RESENE HIBISCUS

1

2

3

4

5

6



YIGAL AZROUEL

RESENE BLISS

A lush, ripe persimmon red with a soft orange underhue, this pink is high octane glamour at its best. With hints of reds and oranges, Resene Bliss has sex appeal in spades.



NANETTE LAPORE

RESENE HIBISCUS

A hot tropical pink that works well for Summer and Winter collections. Resene Hibiscus surprisingly blends in well with the fall palette of black and chocolate browns.



Deluxe Pink at ANZFW 2009

A handful of local designers braved the pink palette at last year's *Air New Zealand Fashion Week*, breaking through the widely favoured monochromatic tones of black and grey. Emerging designer *Tara Cuniffe* showcased an upbeat collection that included a coral pink tone; *Emma Ford* showcased a racy fuchsia coloured bodysuit; whilst *Barbara Lee's* draped long sleeved dress was emphasized by its hot pink hue (images by Michael Ng).



BARBARA LEE



EMMA FORD



TARA CUNIFFE

AVAILABLE FROM
RESENE COLORSHOPS
www.resene.co.nz
0800 737 363